

CONNECT



In this edition of *Connect*, read about philanthropy's role in home ownership and how to support our Season of Giving appeal.

- 4** Becoming a young changemaker
- 6** Philanthropy's role in home ownership
- 11** Donor Spotlight: Patricia Farrant Fund



New Chair Announced for Lord Mayor’s Charitable Foundation

Lord Mayor’s Charitable Foundation has announced the appointment of Paul Bird as the Foundation’s new Chair.

Paul is currently a CEO, NED, author and consultant, and is a qualified chartered accountant with a Master’s degree in community development and thirty years in business and not-for-profits in Australia, Africa, Europe, Asia and the Pacific. Paul has had several leadership roles with the Brotherhood of St Laurence, Australian Red Cross Blood Service, Very Special Kids, The Body Shop, Mission Australia, World Vision, YSAS and Australian Volunteers International (AVI). Paul has extensive experience with not-for-profit Boards and committees, including as Chair of Good Cycles and the International Forum for Volunteering for Development.

Paul first joined the Foundation Board in 2018 and has been a member of the Foundation’s Investment Committee and Committee Chair of the Education & Employment Grants Advisory Panel.

The Foundation’s outgoing Chair, Craig Bell, said “On behalf of the Lord Mayor’s Charitable Foundation’s Board and staff I would like to congratulate Paul on his appointment to Chair. Paul brings a wealth of experience and knowledge to the Foundation and his expertise has been welcomed by the Foundation’s Board.”



Dr Catherine Brown OAM with the Foundation's new Chair, Paul Bird

On accepting his new position Paul said, “In my work with charities in Melbourne over the last 25 years, I have had the privilege to work with the Lord Mayor’s Charitable Foundation to enable lasting outcomes for children, young people, and families in need. The Foundation has an unrivalled reputation for its innovation, responsiveness, knowledge and focus on systems change, which leverages other philanthropic and government funding to achieve outstanding impact.

“I am delighted to be appointed Chair of the Board as the Foundation heads into its centenary. I look forward to the opportunity to engage with philanthropists, donors, businesses and government during our centenary year to raise awareness of, and better respond to, the social and environmental challenges that we face as a community.”

Cybersecurity Update

Recently there have been some highly publicised data breaches. We want to assure our donor community and grant partners that Lord Mayor’s Charitable Foundation has in place a cybersecurity framework that includes data breach prevention controls. The Foundation performs regular testing to ensure controls are working and for continuous improvement.

If you receive any correspondence from the Foundation that you are unsure about, please contact us on 03 9633 0033 or info@lmcf.org.au

Annual Report 2022

Lord Mayor’s Charitable Foundation’s Annual Report 2022 is now available online and in print. It is a great overview of a huge year of work supporting the charitable sector and working on climate change, affordable housing and economic inequality. As a community foundation, our donors and collective giving opportunities are also celebrated.

To download a copy, please visit lmcf.org.au/annual-report-2022 or to request a printed Annual Report, please contact us on 03 9633 0033 or info@lmcf.org.au



The importance of place

As we come to the end of 2022, it is time to reflect on the progress that has been made on the issues we care about and also on the insights learned during the year.

Most importantly, we have continued our work on affordable housing, economic opportunities and climate change while also strengthening the charitable sector.

Our support of increasing the supply of **affordable housing** continues through early support of projects such as the Make Room project at 602 Little Bourke Street and researching innovative approaches to getting more people at risk of homelessness into stable housing (whether that is social housing, private rental or steps toward home ownership such as shared equity). I recommend the new report from Social Enterprise Finance Australia (SEFA) to you; *Finding affordable home options for invisible women*. This report builds on the Foundation’s earlier research into preventing older women living in poverty and provides insights and potential solutions for middle aged women at risk of homelessness as they age. It notes the major obstacles in finding affordable, secure housing: gender pay gap, gender financial literacy, difficulty accessing lending (and building a deposit), and domestic and family violence.

Stable housing is critical to maintaining social connections and also staying in school, lifelong study or a job. But what do women want? *Fundamentally, this group of women wants a place to call home. A home is a secure and stable residence that provides a sense of belonging and connection to family, friends and community. This potentially includes: a space which is conducive to independent living and which offers privacy; a physical space that fosters a sense of wellbeing; autonomy to direct physical, financial and emotional wellbeing for as long as possible, with access to assistance if required; and a suitably sized dwelling – women were willing to compromise on home size if that meant they could have a private, secure space in an appropriate area* (SEFA, 2022, page 6). The importance of place cannot be underestimated. Maintaining social and economic connections is critical to wellbeing.

We see the importance of place in other areas of our work. People in the west of Melbourne want access to jobs emerging from government works programs in transport and housing. This applies especially to younger women in this area who remain less employed than other groups post the COVID-19 pandemic. The Centre for Policy Development and Brotherhood of St Laurence are doing ground-breaking work **creating an enduring network of jobs and skills providers** tackling this issue.

Also in the west, Jesuit Social Services (JSS) has undertaken important work on climate resilience. JSS has mapped communities across the west to identify next steps in growing resilience to climate impacts. This work builds on the Foundation’s Hot Spots initiative where we support local health and community services to support vulnerable people to plan for heatwaves. This has extended into other **Community Climate Resilience** work including the Community Collaborative for Resilience, which is moving to its next phase of development. We are at the forefront of this work within Australian philanthropy and anticipate growing need.

It is interesting to think about Melbourne as a series of villages with everyone connected to a local village of health and community services, schools, shops, public transport and green space. Affordable housing should be well-located not far from services and transport. We should be **planning for the impacts of climate change at the local neighbourhood level** including for heatwaves, droughts floods, bushfires and more unstable weather. The Foundation continues to support disaster preparedness and response as we have done since the 1939 Black Friday bushfires.



Throughout 2022, the Foundation has been **monitoring the health of the charitable sector**. We have made a follow-on grant to Infoxchange for the fantastic NFP Digital Transformation Hub, which helped 10,000 organisations over the last year become digitally more capable and future ready. We have funded the Xfactor Collective Foundation to start up a Social Sector Wellbeing and Resilience Hub to support leaders and staff in the not-for-profit sector as they rise to the challenge of meeting demand for services during these uncertain times.

Our **passion for social innovation** continues through the Innovation grants and our granting approach to go in early to seed and test new solutions to tough social and environmental problems. A new report funded by the Foundation and undertaken by Social Enterprise Australia (SEA) with Impact Tracks found that more than 206,000 people are employed by social enterprises in Australia, including those who would otherwise be shut out of the labour market (SEA, 2022, page 7).

All the projects that we cover in this report build **strong foundations for the future**. We are looking forward to the centenary of the Lord Mayor’s Fund for Metropolitan Hospitals and Charities (our earlier name) in 2023. This will be a time to celebrate and reflect with our committed donors and our collaborating partners. Now is the time to cast ahead to ensure that the future for an inclusive and climate safe Melbourne is achieved.

Wishing everyone a happy and restorative festive season.

Catherine Brown
Dr Catherine Brown OAM
Chief Executive Officer



ABN
Lord Mayor’s Charitable Fund 63 635 798 473
Lord Mayor’s Charitable Foundation 48 042 414 556

Phone
(03) 9633 0033

Mail
GPO Box 1851,
Melbourne 3001

Address
Level 15, 1 Collins
Street, Melbourne 3000

Email
info@lmcf.org.au

Visit our website
lmcf.org.au

Subscribe to e-Connect
lmcf.org.au/subscribe

Read our blog
lmcf.org.au/blog

Make a donation
(03) 9633 0033 or
lmcf.org.au/donate

Cover
Youth in Philanthropy’s 20th Anniversary Insights event was held at the State Library of Victoria. Guest speakers included YIP Ambassador Aishah Brockhoff (centre) and AFL Players for Climate Action co-founders Jasper Pittard (left) and Tom Campbell (right). Over 120 Year 10 students from 15 schools attended the event to celebrate this important anniversary year.

UPDATE

Youth in Philanthropy 20th Anniversary Insights Event



Celebrating 20 years of inspiring the next generation of young changemakers at the Youth in Philanthropy Insights event.

Becoming a young changemaker

This year Lord Mayor's Charitable Foundation celebrated 20 inspiring years of its Youth in Philanthropy (YiP) program. Year 10 student Lucy Brockman participated in the YiP program this year and had the opportunity to talk to YiP Ambassador Aishah Brockhoff.

Youth in Philanthropy (YiP) is a program that inspires young students in Melbourne to learn about philanthropy whilst also providing them with opportunities to create a positive impact on the world. Students work together to become grantmakers and decide on how to support charities working in homelessness, sustainability and more.

This year's YiP ambassador, Aishah Brockhoff, participated in YiP in 2019 when she was a student at MacRobertson Girls' High School. I recently had the opportunity to speak with Aishah and ask her about her experiences participating in YiP.

Aishah said that when she first heard about YiP, she was keen to learn more. "I had never heard of anything like Youth in Philanthropy before and as I learned more about the program, I was really inspired by the amount of work students undertake. I am fortunate to come from a family who is charitable, and participating in YiP allowed me to expand my knowledge about philanthropy and discover a real passion for it."

When asked why she wanted to stay involved with the program, Aishah said

"The immense scope of the YiP program allows young people to become involved in society's biggest issues where they would otherwise be silenced."

by Lucy Brockman
Year 10

"Being involved with YiP for such a long time, I feel that it has left me with a great sense of teamwork and the ability to learn to be giving, showing other students that there is a bigger world.

"It gives you a sense of hope. The program has allowed me to see the immense impact that young people can have on these issues."

Initially, Aishah's goal was to get more young people involved in some of society's big issues, however, her goals have changed. She now really wants to focus on bringing more awareness to students about being changemakers through philanthropy and for more young people to see how they can assist in changing problems in the world.

My school, The Academy of Mary Immaculate, was given the opportunity to participate in a YiP workshop. We were given the task of assessing three grant applications and distributing \$10,000 as grants.

It was a process of much deliberation, as working in a group meant we all had to compromise on what was most important to us individually. We had a focus on homelessness and affordable housing, and due to it being such a significant issue, especially here in Melbourne, we found it challenging to make the funding decision.

Overall, the experience allowed us to have an insight into the amazing work of all the charities the Foundation provides grants to, and just how much of a positive impact they all make on our city.



REPORT

Greater Melbourne Vital Signs





Lord Mayor's Charitable Foundation released its Greater Melbourne Vital Signs 2022 report in August, a report that gathers data and other important indicators to measure and monitor the health and wellbeing of people and communities in Greater Melbourne.

It provides an important snapshot and valuable insight into the issues and challenges we face as a community, particularly the impact that the COVID-19 pandemic has had on our community in the areas of health and wellbeing, employment, resilience, and housing and homelessness.

EDUCATION & EMPLOYMENT

WHAT WE CAN CELEBRATE



-  **Melbourne ranks 9th globally for proportion of people working in jobs broadly associated with sustainability**
-  **Globally, Australia ranks number one in gender equality in education**
-  **Health Care & Social Assistance is Greater Melbourne's largest employment sector, supporting an estimated 264,064 jobs**

WHAT NEEDS TO IMPROVE



-  **Who is employed, future focused employment, and employment security (reducing casualisation)**
-  **Globally, Australia ranks only 75th in women's economic participation**
-  **Job security, support for the growing and vitally important caring economy**

HOUSING & HOMELESSNESS

WHAT WE CAN CELEBRATE

-  **The Victorian Government Big Housing Build committing \$5.3 billion to build 12,300 social and affordable units with a minimum 7-star NatHERS rating over the next four years**
-  **Pandemic responses showed that we can address homelessness and housing affordability (in the short term)**

WHAT NEEDS TO IMPROVE



-  **Continued investment to maintain social housing to adequate levels and increase supply of social housing**
-  **Greater investment in long-term early intervention to prevent entry into and entrenchment in homelessness**

CLIMATE CHANGE

WHAT WE CAN CELEBRATE

-  **Over the 2020/21 financial year, renewable energy sources accounted for approximately 29.4 % of Victoria's electricity generation, up from 24.3 % in 2019/20**
-  **80% of Australians accept climate change is happening, are concerned about it, and want to take meaningful action**

WHAT NEEDS TO IMPROVE



-  **Ensuring that the transition to a post-carbon and environmentally sustainable future maintains momentum but does not come at the cost of economic opportunity for the most disadvantaged**
-  **Further development of the wellbeing, circular, social, and regenerative economic approaches to reduce material extraction, diversify and localise economies, improve the way we live in cities, and create jobs**

HEALTHY & RESILIENT COMMUNITIES

WHAT WE CAN CELEBRATE

-  **Melbourne ranks 20th globally for its all-round progress on implementing the UN Sustainable Development Goals**
-  **63.3% of Greater Melbourne residents have access to public open space of 1.5Ha or larger within 500m**
-  **Internationally, Melbourne has been ranked 6th among 80 cities for citizens' access to healthcare**

WHAT NEEDS TO IMPROVE

-  **Equitable distribution to ensure everyone has access to public open and green spaces across all of Melbourne**
-  **Access to healthcare needs to be equitably distributed and accessible**

 **Read the full Greater Melbourne Vital Signs 2022 report:**

lmc.org.au/MelbVitalSigns

Philanthropy's role in home ownership

Home ownership

Everyone wants a place to call home. In a country where private rental laws are considered very weak – home ownership is the most secure form of housing in Australia. There are now ways philanthropy can help people gain access to this housing type. Moreover, in 2021 the Australian Charities and Not-for-Profit Commission (ACNC) provided better clarification on charities role in the provision of housing – paving the way for philanthropic involvement.

Alternative housing models of home ownership

A good overview of alternative housing models can be found through the SEFA Partnership's report *Finding affordable home options for invisible women*. Although this report is focused on modest-income older women, the report uniquely provides a financial comparison of the individual models.

Some alternative housing models include:

- **Deposit schemes** to get over the first hurdle of saving for a deposit. For instance HeadStart Homes has a way of helping lower income households through a guarantee using philanthropic funding.
- A **shared ownership model** can provide a discount on a deposit, as well as a discount on continuing repayments, enough to ensure that the homeowner is not under housing stress. In Australia, a tried and tested model of shared ownership is **shared equity**, with a common split of 75/25 between the owner of a home and another, usually

silent investor. The Barnett Foundation were charitable trail blazers in shared equity, while more recently Ys Housing aims to provide net-zero, shared equity housing for single parents.


- Women's Property Initiative's *Older Women's Housing* project is a type of **share purchase**, where women use their modest savings to put towards a development. A four-townhouse trial has been built and is currently being tenanted, with help from Lord Mayor's Charitable Foundation.
- **Citizen-led housing** is emerging in Australia and translating it to lower income households is the next step. Lord Mayor's Charitable Foundation is funding SEFA Partnerships to review a model set up by Property Collectives, based on a German model where future owners manage the development – saving associated costs.
- Beyond our granting, the Foundation commits to home ownership through **impact investing**, for instance through the provision of a loan to Habitat for Humanity.


By Erin Dolan
Senior Program Manager
Homelessness & Affordable Housing




The future of philanthropy's role in home ownership

In the future, Australian philanthropy could consider combining both distributions and corpus investments into larger pools of investment to further home ownership. In many ways, philanthropy's role in home ownership in Australia is only just beginning.

**Read the full article here:**

 lmcg.org.au/HomeOwnership

Read SEFA's Finding Affordable Home Options for Invisible Women report, please visit:

 lmcg.org.au/InvisibleWomen

Australian Living Evidence Consortium

Lord Mayor's Charitable Foundation, through the Eldon and Anne Foote Trust, has funded the Australian Living Evidence Consortium (ALEC) and their research work on the living clinical guidelines research since its inception. Health is a Foote philanthropy area of interest. The Foundation was joined by Candel Philanthropy and Ian Potter Foundation as philanthropic partners three years ago.

The clinical research areas have now extended from stroke, diabetes and COVID-19, to heart, kidney and musculoskeletal clinical areas. Their Impact Report outcomes show important results:

- In 2020, approximately 321 Australian lives were saved or life-limiting disability avoided, following a severe stroke, due to practice changes from living stroke guidelines.
- The National COVID-19 Clinical Taskforce has reviewed around 165,000 research studies and over 6,400 systematic reviews to provide almost real-time guidance to Australia's health system to better manage people with COVID-19 illness and inform health policy decisions.
- More than \$1.2 billion in societal benefits within the first year of 'practice-changing new evidence' becoming available, resulting in just two interventions in diabetes and stroke management.
- There is worldwide adoption of Living Evidence by leading health bodies including the World Health Organisation, NICE in the UK, the Wellcome Trust, and US Centres for Disease Control.



Business for Good: report on Social Enterprise

With support from the Lord Mayor's Charitable Foundation, Social Enterprise Australia has published an economic research report *Business for Good: The size and economic contribution of social enterprise in Australia*, which outlines the contribution social enterprises make to the Australian economy.

- Australia has over 12,000 social enterprises.
- Social enterprises contribute \$21.3 billion to the Australian economy and account for 1 per cent GDP.
- Over 206,000 people are employed in Australian social enterprises. That's 1 in 60 jobs or 1.6% of the workforce. It's about the same number of jobs as arts and recreation services or the mining industry.

The Foundation's Program Manager for Inclusive, Sustainable Economy & Jobs Stephen Torsi said, "Social enterprises create great outcomes for people experiencing disadvantage, particularly in employment. It is a great business model best suited to tackling many of today's social challenges.

"The research is an important case for support for strengthening social enterprises in Australia. By using the social enterprise model, there has been an increase in economic inclusion, resilience and workforce adaptability."

Almost one in three social enterprises in Australia are principally concerned with creating meaningful employment for people experiencing disadvantage. It is hoped that the research will help to advocate for a national strategy so that the sector can become more connected, coordinated and grow.

"With the social and economic fallout from the COVID-19 pandemic, growing the social enterprise sector is a key opportunity to drive a more just, inclusive and sustainable new economy," added Stephen.

The Foundation has supported many social enterprises including Streat, Scarf, Free to Feed, Good Cycles, Lively, Sweet Justice, ASA and Green Collect. To learn more about the impact of these social enterprises, please visit lmcg.org.au

**Read Social Enterprise Australia's Business for good: The size and economic contribution of social enterprise in Australia, please visit:**

 lmcg.org.au/BusinessForGood



Mobilising Climate Justice and Resilient Communities in Melbourne's West

For the past seven years, Lord Mayor's Charitable Foundation has been working to address the implications of climate change for the health and wellbeing of people already experiencing disadvantage. It now applies a climate change lens across all of its Impact Areas.

An Innovation Grant to Jesuit Social Services' Centre for Just Places in 2021, has resulted in the recent launch of a *Collaboration Action Plan*, which is part of a larger project, *Mobilising Climate Justice and Resilient Communities in Melbourne's West*.

The Foundation's Program Manager for Healthy and Climate Resilient Communities, Dr Karyn Bosomworth said, "The project will build and grow the climate resilience of communities in Melbourne's western suburbs through stronger networks and collaborations between health and community service organisations."

To help inform the Action Plan, the Centre for Just Places conducted a series of consultations and engagement sessions with 44 community service, community

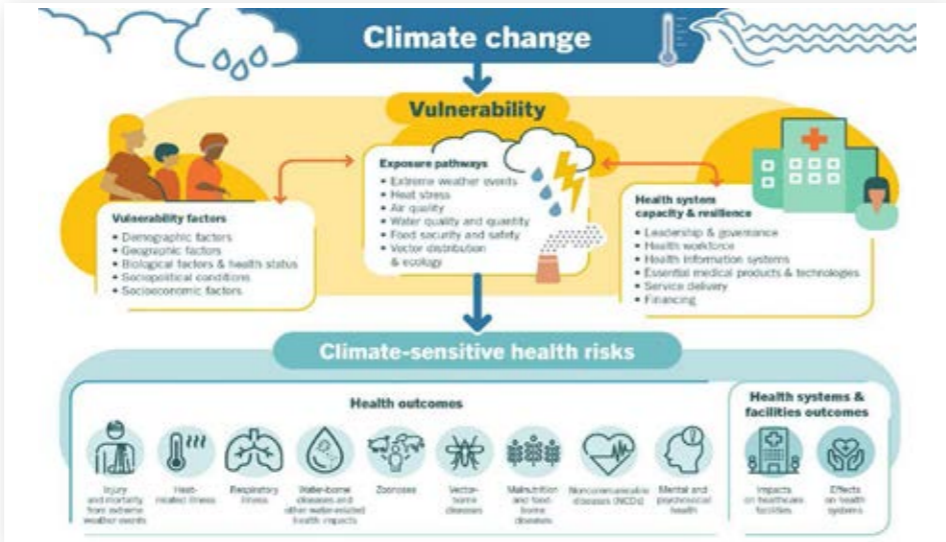

health, and other organisations such as local councils, to map existing networks and identify where networks could be developed or strengthened. There is now a comprehensive stakeholder map that documents the social network of community service and health organisations in Melbourne's west.

Melbourne's western suburbs are some of the fastest-growing municipal areas in Australia, with the cities of Melton and Wyndham leading the way in population growth. The Collaborative Action Plan showed that with this urban growth, comes high heat exposure due to the loss of vegetation and an increased risk of health vulnerabilities due to higher temperatures.

"This project is part of the Foundation's commitment to increasing community resilience to withstand major social and health challenges due to climate change, as well as building preparedness and resilience to extreme weather and disasters," added Karyn.

For further information and to download the Collaborative Action Plan please go to:

lmcf.link/CollabActionPlan

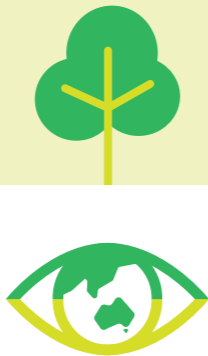


Collaborative Action Plan

Lord Mayor's Charitable Foundation continues to apply a climate change lens across its four Impact Areas.

- Healthy & Climate Resilient Communities
- Homelessness & Affordable Housing
- Inclusive, Sustainable Economy & Jobs
- Generous Melbourne

To learn more about the Foundation's Impact Areas, please visit: lmcf.org.au



Read about philanthropy taking action on climate change in the Foundation's Knowledge Hub:

lmcf.link/TakingAction

Legacy Giving

A gift in your Will enables you to plan for the people, places and causes you love whilst also creating a legacy for future generations. For almost 100 years Lord Mayor's Charitable Foundation has been the trusted custodians of bequests from many generations of donors.

The Foundation's General Manager Fund Development Rikki Andrews said, "A gift left to the Foundation leaves a legacy that creates positive ongoing social change

in communities across Greater Melbourne. The Foundation is very grateful to our donors for their forward thinking and commitment to supporting the health and wellbeing of Melbourne's community now and into the future."

The Foundation welcomes bequests and gifts in Wills – from new friends and old – and gifts can be made to support the Foundation's work, a favourite cause or charity, or to an existing charitable fund account.



Learn more about supporting causes you are passionate about through your Will, please contact the Development Team on (03) 9633 0033

Swanson Society

After two years of lock-downs and online events for our donors, we warmly welcomed back members of our Swanson Society, as well as friends and supporters of the Foundation, to the annual Swanson Society event held in June at the State Library of Victoria. It was a wonderful opportunity to get together to celebrate the collective impact and generosity of our donors, and the ongoing impact of our grants program.

Guest speakers Professor James McMahon, Professor Karen Willis and Associate Professor Natasha Smallwood provided fascinating insights into the impact of COVID-19 on frontline healthcare workers. The Foundation had provided a grant in 2021 for this research to be undertaken. A question-and-answer session facilitated by Fron Jackson-Webb, health editor at The Conversation, enabled further discussion with our guests who were able to ask further questions about the research.



DONOR SPOTLIGHT

Education is the answer to support the next generation of leaders and impact-seekers

Anthony, or Tony, as he’s affectionately known, started his career with a chemistry degree and “in a quandary as to how to maximise my educational achievements”.

Highly introverted, Tony could have stayed in the comfort zone of the science lab, but his desire to grow and give back pushed him to embark on a diverse career path that would stretch him personally and professionally.

“I soon realised that the only way forward for me was to broaden my experiences. To do this I had to remain highly motivated and be willing to explore different avenues.”

Tony was introduced to the concept of charitable funds 15 years ago and has been actively giving every year since. Working with donors in his industry, he has supported programs that enable apprentices in his printing industry to gain overseas experience and bring it back to Australia.

A lasting legacy – supporting people and the planet

Lower Plenty activist Lois Loftus-Hills was committed to supporting her local community. Through the Loftus-Hills Fund, her legacy continues to provide vital funding to the causes she was passionate about.

Lois Loftus-Hills was an active member of the local community, being involved in many community groups such as People for Environment Protection and the Eltham Gateway Action Group. Alongside her late husband Geoffrey, she established the Lower Plenty Neighbourhood House, providing community support and services to the local area.

Seeing the benefits to both the individuals and community, Tony’s desire to set up his own fund was sparked. Through discussions with his long-trusted financial planner and friend Shane Nicholas, Tony was introduced to the Lord Mayor’s Charitable Foundation and the concept of a Charitable Fund Account. The Anthony Dalleore Educational Fund was established in late 2021.

The Anthony Dalleore Educational Fund aims to help those with a passion for making a difference and who want to expand their knowledge base become leaders and change-makers who think outside the box.

In addition to these benefits, establishing a Charitable Fund Account as part of the Lord Mayor’s Charitable Foundation means being part of a community of values-driven individuals. For Tony this is invigorating and feeds his ongoing passion for learning and community-based action.

When getting to the heart of why this Charitable Fund Account means

so much to him, Tony says, “I meet so many people that say they wish they could have explored further study or different opportunities in their careers.

What held them back was limited resources and knowledge of how to maximise their career paths.



Anthony Dalleore

“ I hope my Charitable Fund Account will be the ‘spark’ for those willing to take the risk to follow their passions and explore different opportunities.”

“I want to help people navigate the maze of their career and through this make a strong contribution to individuals and the community.”

Lois included her Charitable Fund Account in her Will and generously provided an additional gift from her Estate. The Loftus-Hills Fund continues to provide support in perpetuity to the charities and causes Lois cared about. These include Australian Conservation Foundation, Environment Victoria, The Wilderness Society and Trust for Nature.



DONOR SPOTLIGHT

Working to support our most vulnerable – Patricia Farrant Fund

Patricia Farrant devoted her life to serving others as a humanitarian and social worker. She established her Charitable Fund Account, the Patricia Farrant Fund, with the intention of supporting her much loved charities for the long-term.



Patricia Farrant

Patricia was attracted to the Lord Mayor’s Charitable Foundation for its history in supporting a range of important issues, its long-term view and the fact she was joining a giving community of like-minded donors. And especially it allowed her to gift beyond her own lifetime into the future.

Before Patricia passed away in 2019, she had nominated her very close friends Norma and Penny (also social workers) to be the successors of her Charitable Fund Account.

Norma recalls Pat being incredibly passionate about supporting people who were vulnerable, particularly women and girls. Through her work as a social worker Pat was very interested in women’s rights, especially for women who had experienced domestic violence.

Norma said that Pat had held the position of Chief Social Worker at the Queen Victoria Hospital where she assisted women who had experienced sexual violence when rape was still seen as a woman’s fault.

“Pat was a pioneer. She established the first sexual assault clinic in 1977, the very first such clinic in Australia. Prior to that, women had to be examined at the police station. They weren’t treated as medical patients at that time and were treated more as making criminal complaints,” said Norma.


“Pat’s other passion was animals. She was horrified at animal cruelty and how animals always seemed to be the most vulnerable. She felt extremely strongly about this issue and generously supported numerous animal welfare charities.”

As Pat’s charitable fund successors, Norma and Penny undertake considerable research online finding and reviewing charitable organisations working in emergencies, disasters rescue and protecting the welfare of animals. They also like to stay personally connected with their donor-advised grant recipients.


“ We like to keep Pat’s memory alive by telling the charities we support about what type of person Pat was. She would be so happy that she continues to support charities that were dear to her heart and knowing she is helping beyond her own lifetime.”


Norma and Penny agree that a great strength of the Foundation, besides its support in so many areas of need, is its endurance through time, “The Foundation has been going strong for almost 100 years and will continue on long after we’re gone.


“We’re all charitable, it is just another way of being an ethical person. Pat graduated in philosophy (with first class honours) from university and felt strongly about helping others. She was awarded a medal in the Order of Australia in 2018, one of the higher categories of the Order.”




Learn more about establishing your own charitable fund account by contacting our Development Team:

 03 9633 0033


 philanthropy@lmcf.org.au



Rikki Andrews
General Manager
Fund Development



Lonia Catalano
Donor Services
Coordinator



Catriona Graveson
Donor Engagement
Coordinator

DONATE TODAY

I would like to make a donation to:

☐ Lord Mayor's Charitable Foundation

☐ \$100 ☐ \$250 ☐ \$500 ☐ \$1,000

☐ Other \$ _____

☐ Foundation Impact Areas

☐ Homelessness & Affordable Housing \$ _____

☐ Inclusive, Sustainable Economy & Jobs \$ _____

☐ Healthy & Climate Resilient Communities \$ _____

☐ Card

Please charge my: ☐ Visa ☐ MasterCard ☐ American Express

Name on card: _____

Card number: _____

Expiry: _____ / _____

Cardholder's signature: _____ Date: ____/____/____

☐ Cheque

Please make payable to **Lord Mayor's Charitable Foundation**

Personal Details:

Title: _____ Name: _____

Address: _____

Suburb: _____ Postcode: _____


State: _____ Phone: _____

Email: _____

Gifts in Will


☐ I have included a gift to Lord Mayor's Charitable Foundation in my Will

☐ I am considering leaving a gift to Lord Mayor's Charitable Foundation in my Will



Mail:


Tear off this donation slip and send to:
Lord Mayor's Charitable Foundation
Reply Paid 1851,
Melbourne VIC 3001




Phone:

Please call
(03) 9633 0033

Monday - Friday
9am - 5pm



Online:

Visit
lmcf.link/
SoG22Donate

Alternatively, scan here to make your gift online

☐ I wish to opt-out of occasional newsletters and event invitations

All contributions of \$2 or more to Lord Mayor's Charitable Fund (ABN 63 635 798 473) and Lord Mayor's Charitable Foundation (ABN 48 042 414 556) are tax deductible. Lord Mayor's Charitable Foundation is the trustee of the Fund.

SoG2022/CONNECT



Donation form



**Now more than ever,
the Greater Melbourne
community needs
our support**

Collection notice:

Lord Mayor's Charitable Foundation collects, uses and holds your personal information to process and receipt your donation, communicate with you about our campaigns, events, fundraising appeals and causes you may wish to consider supporting.

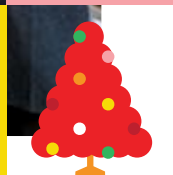
If you do not provide this information, we may not be able to process your donation. Due to the nature of our organisation, personal information collected by us may be disclosed to Foundation personnel, contractors and third-party data hosting service providers located overseas including in the United States of America. All personal information collected will be securely stored by the Foundation and protected from unauthorised use or access. In most cases, where the Foundation uses or transfers information to an overseas third party, the information will be de-identified. In making a donation, you consent to your information being disclosed outside Australia for this purpose. We will take all reasonable steps to ensure that your personal information is used by third parties securely and in accordance with the *Privacy Act 1988* (Cth), in our terms of engagement with those parties. For more information on how we handle your personal information, the Foundation's responsibilities and your rights please review our Privacy Policy at lmcf.org.au/privacy.

If you wish to remain anonymous when making a donation, update or seek correction of your information or unsubscribe from marketing communications, please contact our Privacy Officer at info@lmcf.org.au or (03) 9633 0033.

GIVING

Season of Giving

**Thank you for your
continued generous
support.**



Generous Melbourne - It is the 'Season of Giving'

Once again the Lord Mayor's Charitable Foundation was pleased to join a global movement of generosity #GivingTuesday on 29 November. On this 'Global Day of Generosity', we encouraged people to do good and transform their communities. As the community foundation for Greater Melbourne, our role is to collectively address the big social and environmental challenges facing our community. But we cannot do it alone.

As Australia's largest independent community foundation, Lord Mayor's Charitable Foundation inspires community philanthropy to create positive social change. This festive season, we are calling on the Foundation's **giving community** to support our Season of Giving appeal to ensure a thriving future for all.

Melbourne is described as one of the most liveable cities in the world. Since it was founded, Melbourne has been an ambitious city – ambitious in its culture, infrastructure, events and philanthropy. But for some our vibrant city offers a different reality and for these people there are discrepancies; inequalities and disadvantages in housing, food security, economic opportunities and the ongoing effects of climate change.

When you give to the Lord Mayor Charitable Foundation you are making Melbourne future ready. We encourage you to join us in addressing the big challenges of the day; ensuring all in our community have access to affordable housing, sustainable employment opportunities, secure food, and are resilient to natural disasters and climate change.

How to make your donation



Mail

Please fill out the attached donation slip and post it to the Lord Mayor's Charitable Foundation



Online

Please visit

lmcf.link/SoG22



Phone

Please call

03 9633 0033

