

An abstract network diagram consisting of numerous circles of varying sizes and colors (yellow, green, blue, and teal) connected by thin, light-colored lines. The circles are scattered across the upper half of the page, with some overlapping. The lines connect the centers of the circles, creating a web-like structure that suggests interconnectedness and collaboration.

# CONNECT COLLABORATE COMMUNITY

ANNUAL REPORT 2015

## CONTENTS

### PRESIDENT'S MESSAGE

### HIGHLIGHTS

### CHAIRMAN'S REPORT

### CEO'S REPORT

### MELBOURNE VITALS SIGNS 2014

### GROWING OUR IMPACT IN THE COMMUNITY

Homelessness, Housing and Disadvantage

Feed Melbourne Appeal

Increasing Life Opportunities

In Our Community

Community Health and Wellbeing

Creating and Influencing Positive Social Change

Sustainable Melbourne

Eldon and Anne Foote Trust

### INSPIRING PHILANTHROPY

Philanthropic Services

Youth in Philanthropy

### FINANCE AND GOVERNANCE

Finance and Operations Report

Members of the Board Report

Statement of Profit and Loss  
and other Comprehensive Income

Statement of Financial Position

Declaration by Members of the Board

Auditor's Report

### OUR PEOPLE

Board of Management 2015

Staff 2015

Youth in Philanthropy Mentors 2014

Grants Advisory Panels 2014/2015

## ABOUT US

**1** Lord Mayor's Charitable Foundation is an innovative  
**2** and contemporary community foundation.

**3** Through a combination of grantmaking, research,  
**4** partnerships, philanthropic services, community  
**8** engagement and investment tools, we aim to support  
**10** and build strong communities by addressing current  
**10** social, environmental and community wellbeing issues.

**14** Our Philanthropic Services include gifts in wills, charitable  
**16** fund accounts, giving circles and our campaigns include  
**20** the Flower Day and Feed Melbourne Appeals.

**22** We promote community philanthropy by being relevant  
**25** and brave, aiming to inspire philanthropy and drive  
**26** positive social change.

**29** [lmcf.org.au](http://lmcf.org.au)

**OUR MISSION**  
**WE ENGAGE WITH OUR**  
**DONORS, PARTNERS**  
**AND COMMUNITIES TO**  
**LEAD POSITIVE SOCIAL**  
**CHANGE THROUGH**  
**EFFECTIVE, INNOVATIVE**  
**AND INSPIRED**  
**PHILANTHROPY.**

# PRESIDENT'S MESSAGE



**It is an honour to be President of Lord Mayor's Charitable Foundation, Australia's largest community foundation.**

I take great pride in reflecting on another year of community philanthropy and support for worthy causes around Australia.

Now in its 92nd year, the Foundation has continued to generate funds which make a valuable impact in the community. In the 2014-15 financial year, the Foundation provided grants collectively worth \$9.648 million to more than 500 charitable and not-for-profit-organisations with a focus on the root causes of social, economic and environmental injustices.

In 2015 we were pleased to partner with The Australian Centre for Social Innovation to launch Seed Challenge. This initiative will fund one or more social enterprises aimed at employing young people with disabilities which is imperative considering that only 54 per cent of Victorians of working age (15-64) who live with a disability currently participate in the labour force.

Another highlight of 2014-15 has been our support of the Transforming Housing Project which is being led by Dr Carolyn Whitzman and her colleagues at the School of Design in the University of Melbourne's Faculty of Architecture, Building and Planning. The Transforming Housing Project brings a diverse range of people together to encourage new ways of thinking to tackle the issue of affordable housing and homelessness in our city.

I extend my appreciation to Chairman Daniel Leighton and the Board of Management. I'd also like to thank our Chief Executive Officer Catherine Brown for her continuing vision and leadership. She leads dedicated and hard-working staff who consistently commit themselves to bringing about positive change in our society.

Finally, I thank our generous donors, supporters and Deputy Lord Mayor Susan Riley and the Lady Mayoress' Committee for their ongoing support.

A handwritten signature in blue ink that reads "Robert Doyle".

**Lord Mayor Robert Doyle**  
**President, Board of Management**  
**Lord Mayor's Charitable Foundation**

# HIGHLIGHTS



## GRANTS

- **\$9.648 million was distributed as grants** to charitable and not-for-profit organisations in our four Impact Areas of Homelessness, Housing, and Disadvantage; Increasing Life Opportunities; Sustainable Melbourne; and Community Health and Wellbeing.
  - Grants to **support innovation and the exploring of new ideas** (Innovation, Exploration, Proactive & Initiative grants): \$3,176,610
  - Grants to **support building the capacity of the charitable sector** (Capacity Building, Survive and Thrive, Material Aid, Feed Melbourne, Youth in Philanthropy, Signature): \$4,169,025
  - **Donor advised grants:** \$2,303,023
- Our third annual **Grantseekers Forum** was held at State Library of Victoria.
- For the third year in a row, we undertook our **Grant Applicant Perception Survey** with Swinburne University.
- As part of our Youth Initiative, we sponsored **Nexus Youth Summit 2015** which brought together young social entrepreneurs and philanthropists.
- **Seed Challenge 2015** was launched with TACSI.

## INITIATIVES

- We continued our participation and funding for University of Melbourne's **Transforming Housing Project**.
- We initiated and launched a working group to research the issue of **older women living in income poverty** and identify solutions.
- We undertook the **Melbourne Vital Signs** project with Community Indicators Victoria and Community Foundations of Canada.

## COMMUNITY ENGAGEMENT

- Our **Flower Day Appeal** raised more than \$75,000 with the support of our donors and partner Flowers Victoria to prevent family violence.
- In partnership with Leader Community Newspapers and FareShare we conducted our fifth **Feed Melbourne Appeal**, raised \$250,000 and introduced the Feed Melbourne Feast.
- Melbourne businessman and philanthropist Paul Wheelton OAM was our guest orator at our third annual **Inspiring Philanthropy** event.
- Canadian affordable housing expert Dr Michael Shapcott was our guest orator at our third annual **sector leadership** event.
- We sponsored Australian Community Philanthropy's 2014 **National Community Foundations Forum**.
- We hosted a business breakfast for our Board and other community foundations with guest speaker Ian Bird, CEO of **Community Foundations Canada**.

## PHILANTHROPIC SERVICES

- We hosted a forum for our **Community Charitable Funds** from 10 local government areas to share learning and ideas.
- We published our first annual **Ideas for Giving** for our donors and charitable fund account holders to provide new philanthropic opportunities.
- In 2014 21 schools partnered with us for our **Youth in Philanthropy** Program.
- Several of our **YiP Alumni** formed the In Our Community Alumni Grants Committee to assess applications and make funding recommendations for the In Our Community grants program.
- Our **Next Gen** program partnered with Polyglot Puppet Theatre, Guide Dogs Victoria and Kids Own Publishing to produce three diverse and individual events for donors and their families.
- We began our **Business Improvement IT Project** to integrate our grants, donor and financial management systems and impact evaluation.



# CHAIRMAN'S REPORT



**As I reflect upon the work over the year, I am inspired by the amount achieved by a small team, and the outsized influence that Lord Mayor's Charitable Foundation is able to generate.**

A community foundation is not a private foundation, nor a privileged few granting *noblesse oblige*; a community foundation gains its strength, legitimacy and purpose from being of the community and for the community. We must at all times maintain the highest of standards that are expected from our community. It is because we are a community foundation that we can achieve all that we do. We can and do use our many connections across and within our community to do this because we work within our community to identify and seek out issues, solutions, helpers and partners. Just some of the many partners and projects we have worked with in the past year include:

- Leader Community Newspapers and FareShare on our annual Feed Melbourne Appeal, now in its fifth year supporting dozens of smaller food service charities to provide direct material aid to some of Melbourne's most vulnerable people and families.
- Community Indicators Victoria, with whom we partnered to develop our first Melbourne Vital Signs report. Melbourne is the first capital city in Australia to participate in a global approach to raise awareness of issues within cities, as well as to offer suggestions on how we might challenge and tackle those concerns.
- The Victorian Eco Innovation Lab, looking proactively at the issue of food security and food miles in a rapidly growing city.
- The range of partners in the Transforming Housing Project, bringing together developers, academics, state and local governments to look at the issue of not what we need to do, but how we create affordable housing while maintaining quality of life for all Melburnians.
- The 21 secondary schools and students who work with us on evaluating and awarding small grants through our Youth in Philanthropy Program.
- Our many charitable fund account holders who work alongside wonderful community partners.

I would like to welcome all of our new charitable fund account holders who have joined us over the past year, as well as Impact100Melbourne and the Melbourne Women's Fund, two collective giving circles, demonstrating yet again the power of community.

I would also like to thank all of our Grants Advisory Panel experts, who again give so much of their time and expertise in reviewing and ranking grants for the trustees. Finally, an organisation like Lord Mayor's Charitable Foundation cannot operate without a skilled and expert team and I would like to thank all of our staff for their dedication and commitment, and to especially acknowledge the work of our Chief Executive Officer, Catherine Brown, for her ability to ensure the organisation functions effectively and efficiently.

I would like to acknowledge and thank the Right Honourable Lord Mayor of Melbourne Robert Doyle, for his ongoing commitment to the Foundation. I would also like to acknowledge and pay my deep respect to Peter Snaddon, who after many years of service to the Foundation, has stepped back from the Board of Management. Over the past decade Peter has supported four chairmen with frank, fearless, trusted, timely and above all, accurate legal advice. His contributions will be missed.

I would also like to acknowledge the outstanding 10 years service from Mike Zafiropoulos AM, JP and Dr George Tippet AM K SJ FAMA who respectively brought deep knowledge of cultural diversity and health to the Board's deliberations.

The past year has seen the Board move through a process of renewal, and I am excited to have welcomed Alla Kolganova, Craig Bell, Jane Peck, John Anderson, Richard Balderstone and Dr Sandra Hacker AO to the Foundation's Board. Their presence and positive contributions are already making an impact.

A handwritten signature in blue ink, appearing to read 'D Leighton', with a stylized flourish at the end.

**Daniel Leighton**  
Chairman

# CEO'S REPORT



**'FOUNDATIONS LIKE OURS  
ARE ALSO NODES WHERE  
MANY ORGANISATIONS  
AND PEOPLE CONNECT.'**

**OUR GRANTS STRATEGY  
IS DESIGNED TO PROVIDE  
GRANTS THAT WILL:**

- **SUPPORT INNOVATION AND THE  
EXPLORATION OF NEW IDEAS**
- **BUILD THE CAPACITY OF THE  
CHARITABLE SECTOR**

## **COLLABORATING TO FIND SOLUTIONS**

**Lord Mayor's Charitable Foundation is a connector of people, ideas and funding. As CEO of a foundation that serves the community, I am in a unique position to see the interconnections between people and issues and to support the building of alliances and networks that aim to solve our community's challenges. These connections, networks and alliances are part of our social fabric as a healthy community.**

The challenges that we face as a community are too big for any one organisation or sector to tackle on its own. While at first glance, a philanthropic foundation may seem to be all about funding – about investing in ideas and people to bring about positive social change, foundations like ours are also nodes where many organisations and people connect.

This annual report highlights our role supporting and participating in networks, collaborations and alliances. Through these partnerships, we learn more about the issues that we are working on, make better informed grants, and contribute to building social capital. Philanthropy can be the source of venture capital for the not-for-profit sector. We can help fund the exploration of new ideas and the demonstration of innovative projects. Alongside this, we support the capacity of the not-for-profit sector and backbone organisations that keep networks together.

We are playing an increasing role supporting alliances of people tackling tough issues and also participating within these networks. As a community foundation, we understand the enormous value that can be gained by bringing organisations, consumers and researchers together to really understand an issue and then trial new solutions. Here are some highlights from this approach to our work.





## TRANSFORMING HOUSING

A highlight of the year has been participating in the Transforming Housing Project within the School of Design at the University of Melbourne. Transforming Housing is all about bringing a fresh lens to the tough issue of increasing the supply of affordable housing within Melbourne – part of the solution to reducing homelessness.

In Melbourne there are more than 18,000 people who are homeless and one in five families pay more than 30 per cent of their income on housing, leading to housing stress. Transforming Housing held a major summit on April 20 and May 1 2015 to consider three research papers and hear from local and international experts about policy (inclusionary zoning, integrated housing policy), new financing and partnership options (including social investment by foundations and potentially superannuation funds and the provision of government land for new developments), and sustainable design and construction strategies.

There is a lot we can do as a foundation to help demonstrate new ways of solving our affordable housing problem. For example, this year we funded St Kilda Community Housing to begin work on a social and affordable housing project in the inner south, using a community land trust as a model. This has not been done before in Australia.



## HOMELESSNESS SERVICE COORDINATION PROJECT

This project brings together the ten service providers supporting people who are homeless or at-risk of homelessness in the City of Melbourne and nearby areas. The project is a collaboration between ourselves, City of Melbourne, Council for Homeless Persons with Melbourne City Mission, Justice Connect, The Salvation Army and other important organisations. This is a learning journey for all participants, with the end goal of helping ensure that people who are homeless get the services they need in a way that suits their particular situation, with a focus on transitioning away from homelessness.

## OZANAM HOUSE REDEVELOPMENT

In the area of homelessness, we have also approved major funding to VincentCare for the redevelopment of Ozanam House. This is an exciting project involving VincentCare in a partnership with a developer who is participating at cost, the release of surplus land to help fund the project, an overall increase in apartments for people experiencing long term homelessness, and a new pathway and increased accommodation options as people's independent living capability increases.

Left to right: Rob McGauran (McGauran Gianini Soon Architects, and Adjunct Professor of Architecture Practice, Monash University); Clare Newton (Associate Professor in Learning Environments in the Faculty of Architecture, Building and Planning at the University of Melbourne); Dr Michael Shapcott; the Foundation's Chief Executive Officer, Catherine Brown; Fronesca Jackson-Webb (Health+Medicine Editor, The Conversation) and Daniel Leighton, the Foundation's Chairman of the Board.

Above right: Catherine Brown with Youth in Philanthropy students in 2014.

## AUSTRALIAN ENVIRONMENTAL GRANTMAKERS NETWORK

Engaging with other environmental funders is of great benefit, especially around climate change and food security. We have supported the ability of Australian Environmental Grantmakers Network to map not-for-profits to increase philanthropic giving and increase the capability of not-for-profits working to protect and preserve the environment.

Dame Anne Salmond, a leading environmental scientist from New Zealand, spoke at the Philanthropy New Zealand conference earlier this year (which I was fortunate to attend) about the importance of backbone funding for environmental organisations and the need to approach this work through the lens of 'mutual generosity' – a form of philanthropy that inspires the recipient and is about taking care of our future together.

## FOOD SECURITY

The Sustain Network brings individuals and organisations together who are concerned about the sustainability of Melbourne's food systems. The Foundation is an active participant in this alliance and has funded the Victorian Eco Innovation Lab at the University of Melbourne to undertake the Melbourne FoodPrint project. Food security is one of the key elements of our Sustainable Melbourne Impact Area.

Through the Feed Melbourne Appeal, the Foundation also funds a network of food charities in its partnership with Leader Community Newspapers and FareShare. This is a very dynamic program, which remains an important collaboration for us.

## SENIOR WOMEN OVERCOMING DISADVANTAGE

Following on from our work last year on Ageing Well in Multicultural Communities and our concern about the statistics on poverty in older age in the Productivity Commission's **Deep and Persistent Disadvantage** report, I formed a working group that commissioned Professor Susan Feldman and Dr Harriet Radermacher of Monash University to prepare a research report on senior women and long term financial and social disadvantage. We are also developing a pilot project to encourage older women to be job creators. In this group we are also working with representatives from Good Shepherd, Kildonan, Fitted for Work, Queen Victoria Women's Centre and several individual social entrepreneurs.

## SEED CHALLENGE

The opportunity to work with TACSI (The Australian Centre for Social Innovation) has been an important step for our Foundation. Through the Seed Challenge grant, which will fund one or more social enterprises aimed at employing young people with disabilities, the Foundation has built new networks with disability service providers, disability advocates and also learned about a new process to attract innovative grants.

## RESEARCH AND LEARNING

As a community foundation, the team at Lord Mayor's Charitable Foundation also build our knowledge and impact through our stakeholders and the opportunities for learning they provide. This year we again contracted Swinburne University to undertake a Grant Applicant survey for us. In response to feedback, we have simplified our capacity building and operational support grants into the Thrive Program, making the Grants Program easier to navigate, and have also enhanced the online application process.

We are always available to talk over a project idea and whether it might fit into one of our Impact Areas. We sometimes refer interesting projects that are not a good fit for our program to other funders. Taking part in various CEO networks, our membership of the Australian Environmental Grantmakers Network, Philanthropy Australia and international networks, help us maintain a contemporary understanding of issues and collaboration opportunities.







## MELBOURNE VITAL SIGNS

Our understanding of the issues facing the Melbourne community was enhanced this year through the release of our first Melbourne Vital Signs report. This project was a partnership with Community Foundations of Canada, who licensed us to produce the report for Greater Melbourne with Community Indicators Victoria at the University of Melbourne as our research partners. The report is publicly available and appeared as a lift out in The Age on December 4 2014. A number of leaders from charitable organisations have told me that they have used the data in their own strategic planning, which is fantastic. We know that Vital Signs reports will continue to inform our granting and engage the community.

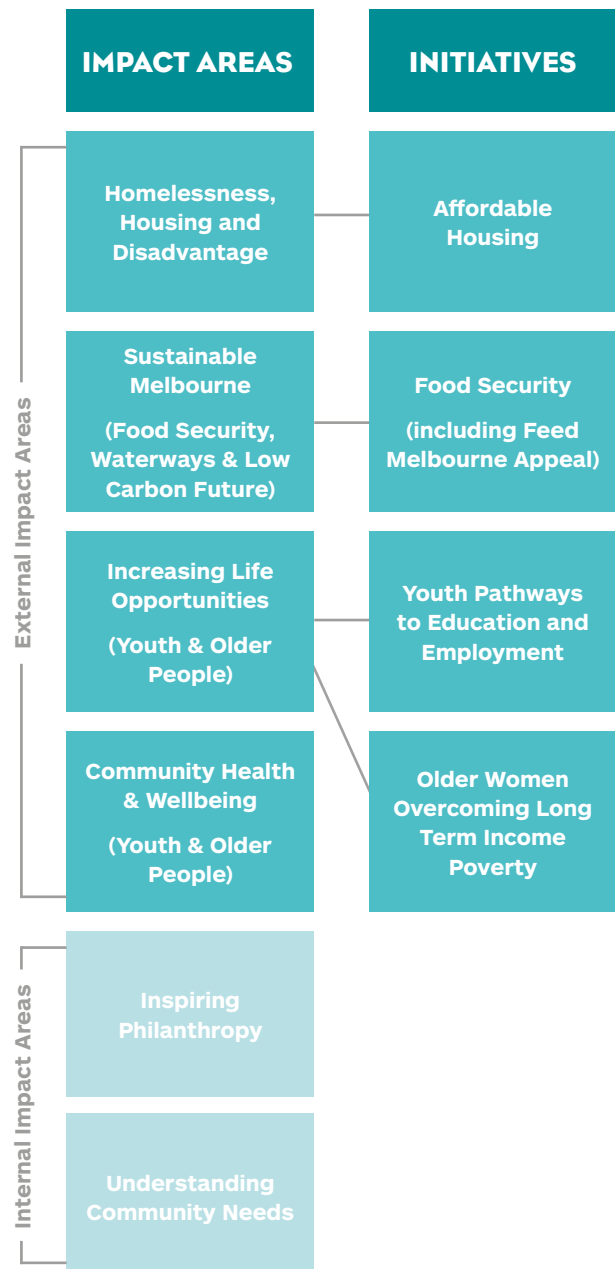
## ENGAGED PHILANTHROPY

Through supporting and participating in networks within our Impact Areas, the Foundation is helping build a more generous, engaged form of philanthropy. Through using our networks, knowledge, social investment and communications capability alongside granting, we can make even more of a difference within our community.

I would like to thank the Board, led by Daniel Leighton, the Right Honourable Lord Mayor Robert Doyle and my team for their energy and their readiness to share a vision of the difference a community foundation like ours can make. This approach requires deep knowledge of our community and some bravery.

We are committed to a socially and economically inclusive, sustainable community.

**Catherine Brown**  
LLB, BA, GradDip BusAdmin, FAICD  
Chief Executive Officer



Above: The Foundation's Chairman Daniel Leighton and CEO Catherine Brown with Impact100Melbourne committee members Georgie Kelly and Rikki Andrews.

Left: Catherine Brown with Ian Bird, President and Chief Executive Officer for Community Foundations of Canada.

# MELBOURNE VITAL SIGNS 2014

Melbourne Vital Signs was published by Lord Mayor's Charitable Foundation in The Age, December 2014, as a comprehensive community report on key indicators assessing the quality of life, health and wellbeing of residents in Melbourne.

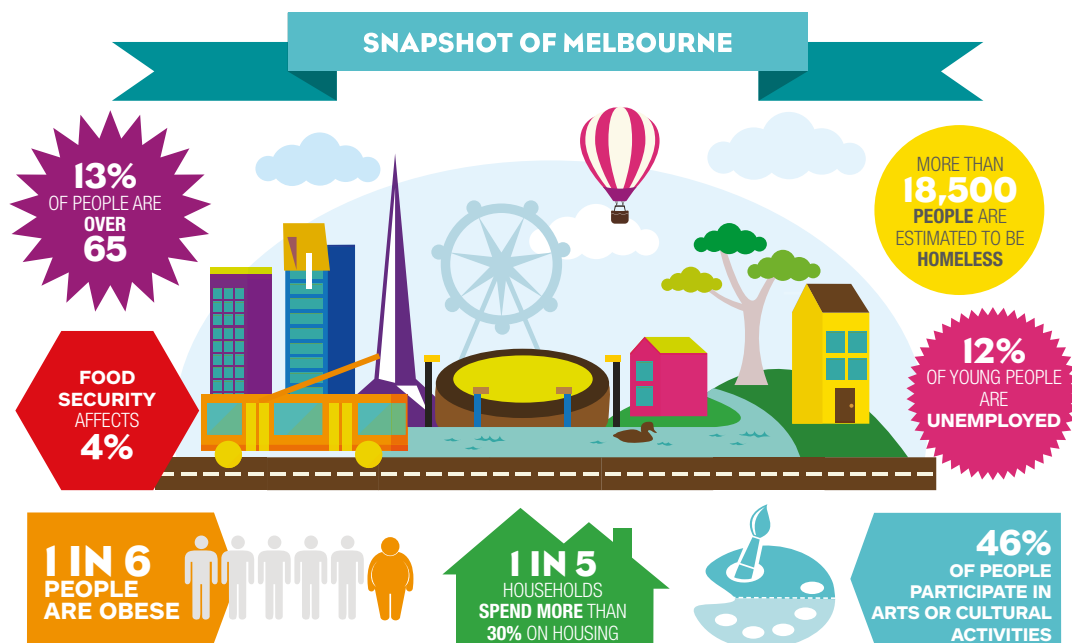
First developed in Canada by Toronto Community Foundation in 2001, the Foundation commissioned Community Indicators Victoria, University of Melbourne, to provide the research to publish Melbourne's first edition of Vital Signs. The research focused on current and emerging community issues in the Foundation's Impact Areas of Homelessness, Ageing, Youth, Food Security, Environment and Community Health. It has been an invaluable resource to help inform our grantmaking.

The Foundation highlighted information about the challenges we face as a community, issues we have identified as important, as well as things to celebrate and improve. We also featured interesting facts about our wellbeing as a city and great stories about people and projects we have funded that are making a positive difference in our community.

To view the full Melbourne Vital Signs 2014 Report, please go to [lmcf.org.au](http://lmcf.org.au)

## WHO WE ARE AS A CITY

- Greater Melbourne is a vibrant city with more than four million residents
- We are culturally diverse with more than 200 languages spoken
- We like to recycle and are concerned about the environment
- 46% of residents participate in arts and cultural activities
- 66% of residents participate in sport and physical recreation
- We value our health and we rate our wellbeing as high
- **Our ageing population is increasing, with more than 524,000 people over the age of 65**
- **Homelessness continues to be a serious community issue**
- **Unemployment is highest amongst our young people aged 15 to 24**
- **There is an increasing demand from the community for food assistance**



# MELBOURNE VITAL SIGNS 2014



**TWO BIG CHALLENGES  
FACING MELBOURNE INCLUDE  
HOMELESSNESS AND YOUTH  
ACCESS TO EDUCATION  
AND EMPLOYMENT**

## HOMELESSNESS

Homelessness can happen for a number of reasons. We know that family violence, a shortage of affordable housing, unemployment, mental illness, family breakdown and drug and alcohol abuse are all reasons as to why someone may become homeless.

### **Justice Connect: Homeless Law Women's Homelessness Prevention Project**

Family violence is the most common cause of homelessness in Victoria for women and children. An innovative new project by Justice Connect Homeless Law, and funded by Lord Mayor's Charitable Foundation, aims to prevent the evictions of women and children from their homes.

Women facing homelessness receive legal advice and representation from pro bono lawyers, as well as intensive social work support from a dedicated social worker employed by Justice Connect.

With a focus on prevention, the project also aims to support women and their children by keeping them safely in their homes.

## **JUSTICE CONNECT**

**WITH A FOCUS ON PREVENTION, THE  
PROJECT ALSO AIMS TO SUPPORT WOMEN  
AND THEIR CHILDREN BY KEEPING THEM  
SAFELY IN THEIR HOMES.**



## YOUTH

Most young people in Melbourne have access to the support and resources they need to achieve success at school, and make the transition beyond school into employment.

However there is a growing number of young people who are disengaged from education and employment which highlights a need for specialised programs to enable all young people to realise their potential.

### **Hands on Learning**

Hands on Learning is an innovative education program that caters to the different ways young people learn by providing opportunities for them to develop new skills outside their classrooms. The program is based on authentic building projects that provide a platform for students to engage, grow confidence and achieve success at school. It aims to foster strong, long term relationships that help young people develop the skills and abilities they need to succeed in work and life, and reach their potential.



## **HANDS ON LEARNING**

**THE PROGRAM IS BASED ON AUTHENTIC  
BUILDING PROJECTS THAT PROVIDE A  
PLATFORM FOR STUDENTS TO ENGAGE,  
GROW CONFIDENCE AND ACHIEVE  
SUCCESS AT SCHOOL.**



# HOMELESSNESS, HOUSING AND DISADVANTAGE

## **TRANSFORMING HOUSING: AFFORDABLE HOUSING FOR ALL**

Transforming Housing brings together a diverse group of housing experts from university, industry, not-for-profit, development and design sectors to investigate and research alternative ways to increase the supply of affordable housing in Melbourne. The Lord Mayor's Charitable Foundation is a partner and funder of this project.

As part of a four year action research project, Transforming Housing considers policy and practical demonstration projects in design, planning, social justice, economic productivity and environmental sustainability to explore innovation in housing and urban planning. This year an Affordable Housing Summit was held with keynote presentations by Dr Nicole Gurran from University of Sydney, Marc Jahr of Community Development Future LLC, and Dr Michael Shapcott, Director of Affordable Housing and Social Innovation at the Wellesley Institute Canada.

## PROVIDING STABLE, AFFORDABLE HOUSING FOR IMPROVED QUALITY OF LIFE

**With more than 18,000 people homeless in Melbourne and one in five households spending more than 30 per cent of their income on housing, Lord Mayor's Charitable Foundation continued to seek out innovative solutions to overcome entrenched homelessness and find new ways to develop and provide affordable housing.**

Through the Impact Area of Homelessness, Housing and Disadvantage, the Foundation aims to prevent long-term homelessness through supporting early intervention housing support services, and increasing the supply of appropriate affordable housing through granting and social impact investment.

During this year the Foundation has partnered to a social investment loan fund model to provide further financial support to the not-for-profit sector in addressing the factors associated with affordable housing and increase supply. This will be launched in November 2015.

The Foundation continues to provide support to emergency relief and food aid agencies to address food insecurity, housing and financial stress particularly during crisis situations.

## COUNCIL TO HOMELESS PERSONS: SHARING SYSTEMS TO END HOMELESSNESS

As Victoria's leading authority on homelessness, Council to Homeless Persons (CHP) is committed to ending homelessness. In 2014 CHP identified an opportunity to support long term and newly arrived rough sleepers in Melbourne's CBD through improved service co-ordination between front line charitable organisations.

Led by CHP, this is a collaborative project between Melbourne City Mission, Justice Connect, The Salvation Army, City of Melbourne, Lord Mayor's Charitable Foundation and other important partners.

With funding support from the Foundation and City of Melbourne, CHP has launched the program to assist rough sleepers to exit homelessness. There are approximately 130 rough sleepers in the CBD who are vulnerable, isolated, and suffer from chronic illness and mental health conditions. Supporting newly arrived rough sleepers to exit quickly from homelessness is critical in delaying any secondary trauma experienced from being homeless.

By connecting both formal outreach and informal charitable response services through a shared inter-agency response and case management system, the capacity of agencies as part of this newly co-ordinated service structure will be greatly improved. Agency workers will be better equipped to identify shared clients and develop response programs tailored to meet the individual needs of people who are homeless, with the aim of providing more flexible and supported pathways out of homelessness.



**DR MICHAEL SHAPCOTT**

## FINDING HOME

The Foundation welcomed Dr Michael Shapcott (above), to lead our Inspiring Philanthropy Conversation, **Finding Home** for Melbourne's philanthropic and housing services sectors.

Sharing his experiences as a founding member of the Canadian Homelessness Research Network, and co-Chair of Canada's National Housing and Homelessness Network, Michael gave practical examples of how Canadian foundations are leading and financing affordable housing initiatives. Michael spoke of the increasing convergence of business and charity models to use impact investing and social purpose businesses as new ways to address affordable housing and homelessness.

Footage of Dr Michael Shapcott's oration and the panel discussion can be viewed on the Foundation's YouTube channel.

### AFFORDABLE HOUSING MEANS:



● **EVERY PERSON DESERVES A SAFE HOME**

● **SPENDING LESS THAN 30% OF HOUSEHOLD INCOME ON HOUSING**



● **A QUALITY HOME NEAR PUBLIC TRANSPORT, GREEN OUTDOOR SPACES, JOBS AND SERVICES**



## HOMELESSNESS, HOUSING AND DISADVANTAGE

GRANTS TO SUPPORT INNOVATION  
AND THE EXPLORATION OF NEW IDEAS

## PROACTIVE

## University of Melbourne

Transforming Housing:  
Affordability, adaptability and access for all \$30,000.00

## Council to Homeless Persons

Improving service coordination for  
rough sleepers in Melbourne's CBD \$80,000.00

## Sacred Heart Mission St Kilda Inc.

Extending the evidence base:  
Homelessness and intensive support \$15,000.00

## HOMELESSNESS / AFFORDABLE HOUSING INITIATIVE

## St Kilda Community Housing

Inner South Community Land Trust \$50,000.00

## INNOVATION

## Housing for the Aged Action Group (HAAAG)

Preventing Homelessness in older Culturally  
and Linguistically Diverse (CALD) communities \$130,000.00

Swinburne University of Technology –  
Swinburne Institute for Social Research

Households at mid-life:  
'life event' threats to housing  
security in old age (Over 2 years) \$187,800.00

## Time for Youth Inc.

The Geelong Project: Community  
Early Intervention Platform (Over 2 years) \$297,540.00

## Sacred Heart Mission St Kilda Inc.

Empowerment or dependency  
program (Over 2 years) \$100,000.00

## SECOND YEAR INNOVATION

## Justice Connect

Shining the light on the  
hidden face of homelessness \$100,000.00

## Project New Dawn Limited

Project New Dawn \$50,000.00

## EXPLORATION

## Maribyrnong Festival Ltd

House Project: a social symbol  
of connection and sustainability \$50,000.00

## Family Access Network Inc.

Young women and family violence program \$50,000.00

GRANTS TO BUILD THE CAPACITY  
OF THE CHARITABLE SECTOR

## SECTOR CAPACITY BUILDING

## Housing for the Aged Action Group Inc.

A home for diversity: Building the capacity  
of homelessness services to meet the needs  
of Older and Culturally and Linguistically  
Diverse (CALD) Victorians \$63,000.00

## SECOND YEAR CAPACITY BUILDING

## Family Access Network Inc.

Bright Futures \$40,000.00

## Lighthouse Foundation

Lighthouse Online: Using new technology  
to help end youth homelessness \$36,400.00

## SURVIVE &amp; THRIVE

## The Ladder Project Foundation

Living Skills at Ladder Hoddle Street (Over 3 years) \$90,000.00

## Western Emergency Relief Network

Operating costs (Over 3 years) \$55,000.00

## The Trustee for the Queen's Fund

Prevention of homelessness in single  
women and their children in Victoria (Over 3 years) \$65,000.00

## Mental Health Legal Centre Inc.

Legal Education Program (Over 3 years) \$50,000.00

## St Mary's House of Welcome

Save Our Saturdays \$20,000.00

## SMALL INFRASTRUCTURE

## Hope Street Youth and Family Services Inc.

Youth Place 3056 (Supporting Homeless Youth) \$3,500.00

## Women's Housing Ltd

Bike Responsibility \$6,336.00

## UnitingCare Ballarat Parish Mission

BreezeWay – Meals For Homeless People Project \$6,895.00

## MATERIAL AID

## Asylum Seeker Resource Centre Inc.

Asylum Seeker Housing Project \$10,000.00

## Elizabeth Hoffman House

Aboriginal Women's Services Inc.  
Bits For Beds \$6,400.00

Frankston Churches  
Community Breakfast Inc.

Hot breakfast service Frankston \$5,000.00

## We Care Community Services Inc.

Hope and a Better Tomorrow \$8,500.00

## Destiny Care

Destiny Care Hampers and Midweek Lunch program \$10,000.00



## VINCENTCARE VICTORIA

### The Ozanam Redevelopment Project

**Grant: \$600,000.00**

With a renewed focus to permanently end homelessness in North Melbourne and surrounding suburbs, VincentCare Victoria is redeveloping its Ozanam House. VincentCare has developed partnerships across community, government, business and philanthropy to develop an innovative service platform that will provide a range of accommodation, crisis and care services to people experiencing homelessness. This development will be the first of its kind in Victoria and will enable VincentCare to more effectively respond to adults who have experienced homelessness and ongoing financial and social disadvantage.

This project will increase the supply of affordable housing to include crisis accommodation response (63 apartments), transitional accommodation for men and women who are recovering from a period of homelessness (41 apartments) and long term independent living units for men and women aged over 50 who have experienced homelessness (26 apartments).

The grant from Lord Mayor's Charitable Foundation will assist VincentCare to pursue other funding from government and philanthropic organisations. Property Development Group (PDG) will build the project at cost, providing significant savings.

Photo credit: VincentCare, Ozanam House.

# \$600,000

**SIGNATURE GRANT**



**THIS DEVELOPMENT WILL BE THE FIRST OF ITS KIND IN VICTORIA AND WILL ENABLE VINCENTCARE TO MORE EFFECTIVELY RESPOND TO ADULTS WHO HAVE EXPERIENCED HOMELESSNESS AND ONGOING FINANCIAL AND SOCIAL DISADVANTAGE**





SINCE 2008  
MORE THAN

**\$2.4  
MILLION**

IN GRANTS



MORE THAN

**150**

FOOD SERVICE  
CHARITIES SUPPORTED

## FEED MELBOURNE APPEAL 2014

A unique partnership between media, philanthropy and charity has produced the Feed Melbourne Appeal, one of Melbourne's largest fundraising appeals to reduce food insecurity.

The combined determination of Lord Mayor's Charitable Foundation, Leader Community Newspapers and FareShare to address Melbourne's growing food security issue has resulted in more than \$2.4 million in grants over the past seven years to more than 150 food service charities.

Feed Melbourne Appeal provides grants for the purchase of kitchen infrastructure, transport and some food to ensure charities are able to meet client demand.

The Appeal's message is both charitable and environmental – reduce food waste to reduce landfill, and provide nutritious food for all people seeking assistance to reduce food insecurity.

In 2014, with the generous support of the Melbourne community and the funds matched by the Foundation, just over \$500,000 was raised and distributed as grants to 33 charities.

Left to right: Marcus Godinho, CEO at FareShare, Catherine Brown, CEO at Lord Mayor's Charitable Foundation and John Trevorrow, Editor-in-Chief at Leader Community Newspapers. Photo credit: David Crosling, Leader Community Newspapers.

## FEED MELBOURNE APPEAL

## GRANTS DISTRIBUTED SEPTEMBER 2014

**Asylum Seeker Resource Centre (ASRC)**

Large cool room	\$15,000.00
-----------------	-------------

**Banyule Community Health (3081 Angels)**

Infant formula	\$4,000.00
----------------	------------

**Bayside Community Care Inc.**

Additional fridge and freezer	\$5,000.00
-------------------------------	------------

**Benwerren**

Guest fridge, food storage containers, food processor and meat	\$3,968.00
--	------------

**bestchance Child Family Care**

Purchase of healthy food items	\$5,000.00
--------------------------------	------------

**Cardinia Combined Churches Caring Inc.**

Purchase of healthy food items	\$12,000.00
--------------------------------	-------------

**Churches of Christ Community Care**

Replacement of kitchen equipment	\$700.00
----------------------------------	----------

**Combined Churches Caring Melton Inc.**

New cool room	\$15,000.00
---------------	-------------

**Concern Australia**

Large lockable freezer, food storage containers and kitchen equipment	\$2,300.00
---	------------

**Dandenong Ranges****Emergency Relief Service Inc.**

Trolley, freezer and food items	\$5,145.00
---------------------------------	------------

**Darebin Information Volunteer Resource Service**

Food storage containers and food items	\$10,400.00
--	-------------

**Doveton Baptist Benevolent Society**

Increased amount and variety of food for community meals program and Christmas hampers, and food storage containers	\$5,500.00
---	------------

**Emerald Hill Mission Inc.**

Increased amount and variety of proteins and snacks, and an additional community meal	\$10,000.00
---	-------------

**Endeavour Ministries Inc.**

Food items and deep fryer	\$6,000.00
---------------------------	------------

**FareShare**

Operations	\$166,887.00
------------	--------------

**Holy Fools**

Contribution toward new van, trolley, food storage containers, BBQ and plastic tables	\$15,000.00
---	-------------

**Hope For Tomorrow Inc.**

Kitchen equipment, contribution toward refrigerated van, and food items	\$15,000.00
---	-------------

**Inner East Community Health**

Freezer, portable burner	\$3,965.00
--------------------------	------------

**Melbourne Anglican Benevolent Society (Pantry 5000)**

Caged trailer, food items suitable for specific conditions	\$9,500.00
--	------------

**Narre Warren Christian Church Inc. (Transit Soup Kitchen)**

Food transport vehicle	\$15,000.00
------------------------	-------------

**NCJW (Victoria) Community Services Inc.**

Replacement of dishwasher, kitchen equipment and trolley	\$11,000.00
--	-------------

**One Voice – United We Stand Inc.**

Oven and stovetop, dishwasher, food warmer, shelving, benches, commercial fridge and freezer and food storage containers	\$15,000.00
--	-------------

**Ringwood Area Lions Aged Care Inc.**

Additional fridge and freezer	\$4,400.00
-------------------------------	------------

**Royal District Nursing Service Limited**

Nutritional support for Melbourne's homeless	\$12,000.00
--	-------------

**South Eastern Community Care Inc.**

Ovens, microwaves and trolley	\$14,980.00
-------------------------------	-------------

**St Kilda Gatehouse**

Materials for kitchen fit-out	\$15,000.00
-------------------------------	-------------

**The Melbourne Jewish Community Fund**

Kosher and culturally specific food items	\$8,840.00
---	------------

**The Salt Foundation**

Food processor, knife set and food items	\$13,360.00
--	-------------

**Theodora House Inc.**

Construction of sheltered area for Foodbank	\$10,000.00
---	-------------

**UnitingCare Harrison**

Generator for food truck, kitchen equipment and purchase of proteins	\$12,000.00
--	-------------

**Urban Seed**

Kitchen refurbishment	\$14,750.00
-----------------------	-------------

**White Lion Incorporated**

Contribution toward new bus for the Chatterbox Bus program	\$15,000.00
--	-------------

**Whittlesea Ministries Inc.**

Fridge and freezer, preparation of site for new Foodbank shed	\$14,965.00
---	-------------



# INCREASING LIFE OPPORTUNITIES

## DEVELOPING YOUTH ENTREPRENEURSHIP:

### Australian Centre for Rural Entrepreneurship (A.C.R.E)

A.C.R.E's mission is to make entrepreneurial education available and accessible to young people living in rural communities to enable them to be job creators. By providing new approaches to education, young people are encouraged and supported to develop their business ideas through a program of engaged learning online, education and mentoring.

A.C.R.E works in partnership with Australia's leading youth education providers to support rural development through opportunities for young people to grow and build their ideas into thriving businesses and ultimately make a positive contribution to their communities.

To support the development of A.C.R.E's entrepreneurial education program and the establishment of a learning hub centre in Beechworth, the Foundation provided a grant of \$250,000 over two years. Both the social enterprise and philanthropic sectors see the potential of A.C.R.E to develop businesses of the future. The grant has assisted A.C.R.E to establish partnerships with Foundation for Young Australians, National Centre for Indigenous Excellence, Social Traders, The Foundation for Rural and Regional Australia and The School for Social Entrepreneurs.



## INCREASING ACCESS TO EDUCATION, GAINING EMPLOYMENT AND ENCOURAGING SOCIAL PARTICIPATION IN COMMUNITY BASED ACTIVITIES

Through two research projects and the Melbourne Vital Signs project, Lord Mayor's Charitable Foundation strengthened its understanding of the importance of access to education, employment and social participation to improve the quality of life for vulnerable young and older people in our community. The Foundation's Increasing Life Opportunities Impact Area aims to increase the number of vulnerable young and older people participating in education and employment, as well as providing opportunities for social participation in their communities.

Vulnerable young and older people are often faced with a range of barriers and limited opportunities to access education and employment. By supporting projects that increase access to suitable education, encourage engaged learning, and improve transitions to employment, younger and older people are able to develop the skills, experience and networks required to find employment, create brighter futures and age well.

Community leadership, arts and other activities strengthen community cohesion while also promoting positive social change. Participation in these activities provides opportunities for younger and older people to connect into their communities and develop social networks and positive experiences. They are able to share their skills and knowledge, while reducing individual feelings of social isolation and enhancing their self-confidence.

### JESUIT SOCIAL SERVICES: AMPLIFY

Each year the Foundation partners with Social Traders to provide the opportunity for an early stage social enterprise working in the Youth At-Risk area to participate in The Crunch – Social Traders' six-month social enterprise incubator program. In 2015, this place was given to the team from Jesuit Social Services' Artful Dodgers Studios – and the result is Amplify.

Amplify provides an inspirational and creative landing place for marginalised young people. At its core, Amplify works to get vulnerable and at-risk young people back on track through arts and music mentorship, while supporting them to reach their full potential. It provides quality music and entertainment packages for events by employing both emerging and established artists. Young people have increased access to a variety of training and mentoring opportunities which will move them from the 'landing place' to the 'launching pad' of their careers.

## SEED CHALLENGE: FINDING INNOVATIVE SOLUTIONS TO SOCIAL ISSUES

In response to the growing issue of high rates of unemployment for young people with disability, Lord Mayor's Charitable Foundation launched the Seed Challenge in collaboration with The Australian Centre for Social Innovation (TACSI).

The Seed Challenge was developed to spark new ideas, encourage innovation and cross-sector collaboration from social entrepreneurs, employers and not-for-profit organisations to develop and provide better employment and training opportunities for people living with a disability.

The recipient or recipients of the Seed Challenge will be announced in November 2015 and will be provided with grants of up to \$150,000 as well as assistance to develop their ideas to implementation.

Below: Seed Challenge Pitch.



SEED CHALLENGE WAS DEVELOPED TO SPARK NEW IDEAS, ENCOURAGE INNOVATION AND CROSS-SECTOR COLLABORATION



THE RECIPIENT(S) OF SEED CHALLENGE WILL BE PROVIDED WITH GRANTS UP TO

**\$150,000**

## INCREASING LIFE OPPORTUNITIES

### GRANTS TO SUPPORT INNOVATION AND THE EXPLORATION OF NEW IDEAS

#### PROACTIVE

##### Taskforce Community Agency Inc.

Money4Jam \$13,500.00

##### University of Melbourne – Melbourne Theatre Company

Youth Scholarship Course \$12,500.00

##### The Reach Foundation

REACH Enterprises Pilot \$55,000.00

##### St Kilda Community Housing Ltd

SKYS Design Transition Project \$10,000.00

##### Documentary Australia Foundation Donations Fund

The Will to Fly \$44,000.00

#### YOUTH INITIATIVE

##### Youth Affairs Council of Victoria Inc.

2015 Koorie Youth Summit \$15,000.00

##### Documentary Australia Foundation Donations Fund

Zach's Ceremony \$25,000.00

#### INNOVATION

##### Monash University (Social Inclusion & Social Policy Research Unit)

Young Indigenous people leaving  
out of home care in Victoria \$49,693.00

##### Australian Centre for Rural Entrepreneurship Limited

ACRE Start-Up  
and Capacity Building Project (Over 2 years) \$250,000.00

##### Sharing Stories Public Fund (Sharing Stories Foundation)

Victorian Digital Storytelling Program (Over 2 years) \$299,000.00

##### Outer Urban Projects Limited

Ensemble/Linkage/Work (Over 2 years) \$300,000.00

#### SECOND YEAR INNOVATION

##### Hands on Learning Australia

Expanding the Hands on Learning program  
in the northern and western regions  
of metropolitan Melbourne \$105,000.00

##### Taskforce Community Agency Inc.

Trade Try-Outs: Opening pathways  
to education, training and employment \$50,000.00

##### Yooralla

Real Jobs For Youth With Disability Program \$75,000.00

#### EXPLORATION GRANTS

##### Pigeons Projects Limited (100 Story Building)

Social Enterprise Consultancy Service \$42,948.00

##### Weenthunga Health Network Inc.

Building resilience in First Australian school girls  
and encouraging interest in health careers \$50,000.00

##### Australian Muslim Women's Centre for Human Rights

Marrying Young: An exploratory study of young  
muslim women's decision-making process \$50,000.00

##### Australian National University (National Centre For Indigenous Studies)

Improving Indigenous education outcomes  
in Victoria \$49,993.00

Right: Sharing  
Stories Foundation



## INCREASING LIFE OPPORTUNITIES

## GRANTS TO BUILD THE CAPACITY OF THE CHARITABLE SECTOR

## SECTOR CAPACITY

**Brotherhood of St Laurence**

Maarni – Aboriginal women's employment leadership and capacity building program	\$20,000.00
---	-------------

## SECOND YEAR CAPACITY BUILDING

**Good Cycles Limited**

Good Cycles Expansion	\$20,000.00
-----------------------	-------------

**Operation Newstart Victoria**

New Business Development Role for Operation Newstart Victoria	\$20,000.00
---	-------------

**Emerging Writers' Festival Gift Fund (Emerging Writers' Festival Inc.)**

Program and Engagement Development	\$20,000.00
------------------------------------	-------------

**Footscray Community Arts Centre Ltd Fund (Footscray Community Arts Centre Limited)**

Digital Engagement Officer and Digital Strategy Development	\$20,000.00
---	-------------

## THIRD YEAR CAPACITY BUILDING

**Polyglot Puppet Theatre Fund**

Kids in Control – An Arts Residency Framework	\$25,000.00
---	-------------

**St Martins Youth Arts Centre Donations Fund**

Building a sustainable scholarship program	\$15,000.00
--	-------------

**Theatre Works Limited**

Theatre Works Development, Partnerships and Philanthropy Program	\$25,000.00
--	-------------

## SURVIVE &amp; THRIVE

**Writers Victoria**

Write-ability: an accessible literature project for people with disability	(Over 3 years) \$65,000.00
--	----------------------------

**Rawcus Public Fund (Rawcus Theatre Company Inc.)**

Beyond The Room – Coordinator	(Over 3 years) \$47,580.00
-------------------------------	----------------------------

**The Stella Prize Inc.**

Stella Forever	(Over 2 years) \$50,000.00
----------------	----------------------------

**La Mama Trust (La Mama Inc.)**

Development and Partnership Officer	(Over 3 years) \$60,000.00
-------------------------------------	----------------------------

**Gallery Kaiela Incorporated**

Strengthening Inclusion in Arts and Cultural Programs	\$20,000.00
---	-------------

**Careertrackers Indigenous Internship Program Limited**

Regional Victoria Expansion	(Over 3 years) \$90,000.00
-----------------------------	----------------------------

**The River Nile Learning Centre Inc.**

Provision of Childcare	(Over 3 years) \$86,545.00
------------------------	----------------------------

**Young People's Legal Rights Centre Inc.**

Smart Justice for Young People project	\$10,000.00
--	-------------

**Aboriginal Literacy Foundation Inc.**

Northern Melbourne Tutorial & Mentoring Hub	(Over 3 years) \$75,000.00
---	----------------------------

## THIRD YEAR SURVIVE &amp; THRIVE

**Express Media Inc.**

Helping Express Media to Survive and Thrive from 2014-16	\$30,000.00
--	-------------

**The Substation Incorporated**

Marketing and Audience Development – increasing engagement with the Arts in Melbourne's West	\$30,000.00
--	-------------

**Songlines Music Aboriginal Corporation Public Fund (Songlines Aboriginal Music Corporation)**

Strengthening governance and organisational capacity	\$30,000.00
--	-------------

**Little Big Shots Public Fund (Petite Grand Kaboom Ltd)**

Little Big Shots: Melbourne's International Film Festival For Kids	\$30,000.00
--	-------------

## SMALL INFRASTRUCTURE

**Visionary Images Gift Fund**

XSite Mobile Studio	\$8,600.00
---------------------	------------

**Midsumma Festival Fund (Midsumma Festival Inc.)**

Supporting emerging arts-workers (internships with Midsumma)	\$3,995.00
--	------------

**Kage Physical Theatre Association Inc. Donations Fund (Kage Physical Theatre Association Inc)**

Out of Earshot, Out of Reach	\$10,000.00
------------------------------	-------------

**Aboriginal Literacy Foundation Inc.**

Melbourne Learning Centre Office Development & Infrastructure	\$10,000.00
---	-------------

**The River Nile Learning Centre Inc.**

Educating Disadvantaged Youth – Computing Skills	\$9,040.00
--	------------

## MATERIAL AID

**Travellers Aid Australia**

Pathways to Education	\$10,000.00
-----------------------	-------------

**Emerald Hill Mission Inc.**

Education Program	\$10,000.00
-------------------	-------------

**Polyglot Puppet Theatre Fund (Polyglot Puppet Theatre Ltd)**

Get in the Van: Keeping Polyglot on the Road	\$10,000.00
--	-------------

Right: Good Cycles







**IN OUR COMMUNITY GRANTS  
PROGRAM TAKES LEARNING  
BEYOND THE CLASSROOM**

**25**

**NOT-FOR-PROFIT  
AND SCHOOL  
PARTNERSHIPS**

**\$118,253**

**IN GRANTS**

## IN OUR COMMUNITY

Now in its third year, the In Our Community Grants Program invites not-for-profit organisations and schools to partner together and work on projects that address important social issues relevant to their local communities with the aim of providing positive social, environmental and educational outcomes for students.

In 2014 \$118,253 in grants were provided to 25 not-for-profit and school partnerships. In Our Community takes learning beyond the classroom, helping to increase life opportunities and provide a social experience, as well as inspiration and motivation for students to make a positive impact in their local community.

After receiving an In Our Community grant St Vincent de Paul and St Mark's Catholic Parish Primary School in Fawkner worked together with parent volunteers and staff to re-establish the school's vegetable gardens. Students have already grown, harvested and donated vegetables to St Mark's Hope Café which provides free meals to local people who are homeless, socially isolated, or in emergency accommodation.

As part of the project a seed raising greenhouse was built, a new irrigation system installed, a worm farm was established and composting bins put in place for recycling.

It has been a wonderful opportunity for students to understand social issues in their community and build their self confidence in knowing they have made a positive contribution in helping people living in challenging circumstances.

Above: Students and teachers from St Mark's Catholic Parish Primary School in Fawkner with vegetables they have grown for the Hope Café.

## IN OUR COMMUNITY GRANTS 2014

### COMMUNITY HEALTH AND WELLBEING

#### Alzheimer's Australia Inc.

##### Parade College

'Parading Up The Boulevard':  
An intergenerational life stories project  
promoting person centred care \$5,000.00

#### Ardoch Youth Foundation Ltd

##### Stonnington Primary School

Go Away Mr Worrythoughts \$2,340.00

#### Australian Red Cross Society

##### Heatherhill Primary School

Building Blocks for a Healthy Community:  
School Kitchen Construction \$5,000.00

#### Bluearth Foundation

##### University Park Primary School

Bluearth Better Buddies Project \$5,000.00

#### Ceres Environmental Fund

##### Kingsley Park Primary School

Hands on garden – connecting our community! \$5,000.00

#### Epilepsy Foundation Ltd

##### Mt. Erin Secondary College

First Aid Community Engagement Program \$5,000.00

#### Playgroup Victoria Inc.

##### Lilydale Primary School

Community Supported Playgroup Leap  
(Lilydale Education and Play) \$5,000.00

#### Merri Community Health Services

##### Westbreen Primary School

Community Kitchen Project \$5,000.00

### HOMESLESSNESS

#### McAuley Community Services for Women

##### Our Lady of Mercy College

No Place Called Home \$5,000.00

#### St Vincent de Paul Society Victoria Inc.

##### St Mark's Catholic Parish Primary School

Establishment of a vegetable garden for  
distribution of produce to support those  
at-risk of homelessness \$5,000.00

#### Wintringham

##### Footscray City College

Wintringham Homeless Insight Program \$5,000.00

### INCREASING LIFE OPPORTUNITIES

#### Berry Street Victoria Incorporated

##### Dandenong South Primary School

After School Education (ASE) \$5,000.00

#### Brotherhood of St Laurence

##### Woodleigh School

Homework and Learning Club – Boys Shed \$4,530.00

#### Doutta Galla Aged Services Ltd

##### Marian College Sunshine West

Woorack Reminiscence Mural \$5,000.00

#### Down Syndrome Australia

##### Armadale Primary School

Lots of Socks – Down Syndrome Awareness and  
Inclusion Package \$5,000.00

#### EACH

##### Blackburn English Language School, Maroondah (BELS)

Communication Strategy with the BELS  
Chin Parent Community \$2,383.00

#### Hands On Learning Australia

##### Dromana Primary School

Dromana Primary School Transition  
and Boat Shed renewal \$5,000.00

#### Interchange Outer Eastern Region Inc.

##### Ringwood Secondary College

Student Volunteer Program (SVP) \$5,000.00

#### South Port UnitingCare

##### Port Melbourne Primary School

BOLT – Bikes Over Lunch Time \$5,000.00

#### Collins Street Baptist Benevolent Society Inc.

##### Urban Seed

##### Debney Meadows Primary School

Good G.A.M.E Soccer \$5,000.00

#### Visionary Images Inc.

##### Sacred Heart School

Visionary Images Taster Sessions \$4,000.00

#### Western Edge Youth Arts Inc.

##### Mount Alexander College

New Stories of Identity \$5,000.00

### SUSTAINABLE MELBOURNE

#### Cultivating Community

##### Springvale Rise Primary School

The Healthy Living Program \$5,000.00

#### Gould League Limited Fund

##### Melba College

Melba Edible Forest Garden \$5,000.00

#### Port Phillip EcoCentre Public Fund

##### St Columba's School

Matter Matters: Developing a school based  
resource recovery program (target: zero waste) \$5,000.00



# COMMUNITY HEALTH AND WELLBEING

## FLOWER DAY, SOWING THE SEEDS OF CHANGE

### Connecting Community to Cause

Lord Mayor's Charitable Foundation's Flower Day Appeal was first launched in 1925 to support Melbourne's public hospitals and kindergartens. Today Flower Day raises vital funds from the wider Melbourne community for not-for-profit organisations working to prevent family violence.

Each year thousands of women and their children suffer physically, psychologically and financially within their homes as a result of family violence which is also the main contributor to women and children becoming homeless.

This year, with the support of Flowers Victoria, Flower Day 2015 was launched at Melbourne's International Flower and Garden Show. In recognition of Flower Day's 90th anniversary, Flowers Victoria generously sponsored the Foundation's stand in the Main Hall of the Exhibition Building.

The Foundation is committed to creating a future without family violence and through the Impact Area of Community Health and Wellbeing funds projects to reduce family violence and change society's acceptance of violence against women and children.

## SUPPORTING THE DEVELOPMENT OF HEALTHY COMMUNITIES

**Through the Impact Area of Community Health and Wellbeing, Lord Mayor's Charitable Foundation funds projects and programs that promote and encourage community health initiatives that will improve our quality of life.**

The Impact Area focuses on a broad range of community health and wellbeing issues such as social isolation, mental and physical health in young and older people, using arts to improve health and wellbeing, moving towards a more inclusive society and reducing racism, and challenging social norms to prevent family violence.

The Foundation currently supports Melbourne's health and wellbeing by:

- Supporting ageing well through the development of age friendly communities;
- Leveraging arts and arts practices to reduce social isolation, improve community connectedness and quality of life;
- Supporting health promotion initiatives focussed on healthy lifestyle choices;
- Supporting vulnerable young people's mental health wellbeing; and
- Preventative measures to reduce family violence.

## NATIONAL DISABILITY SERVICES

### Building Communities of Practice

With the introduction of the NDIS and National Age Care reforms, National Disabilities Services will create a centralised support program to assist the disability, mental health and aged care sectors to successfully transition, respond to and implement the new reforms. The program will provide these sectors with access to information and resources to help them better understand and respond to the changing policy and market environment.

## PENINGTON INSTITUTE

### Health Promotion Campaign

Lord Mayor's Charitable Foundation provided a grant to the Penington Institute of \$100,000 to develop a health promotion campaign to communicate to young people, who are at-risk of or have begun using synthetic drugs, the often devastating effects of drug use. Through an app and website, the project aims to reduce the adverse effects of drug use by providing evidence based information about synthetic drug harms. The health promotion campaign will be launched in 2016.

## VICTORIA UNIVERSITY – COLLEGE OF HEALTH & BIOMEDICINE

### Growing a Healthy Baby

What a woman eats during pregnancy can have a lifelong impact on her child's health. Recent studies indicate that overeating during pregnancy can result in a child becoming more susceptible to obesity and to chronic diseases in adulthood, including high blood pressure, diabetes and cardiovascular disease. Maternal obesity also gives rise to serious pregnancy complications, such as gestational diabetes, stillbirth and preterm birth.

Victoria University's research indicates that many women misunderstand what a healthy diet is during pregnancy, and that the old notion of 'eating for two' persists. The Foundation provided a grant of \$49,849 for the production of an information booklet and a website for mothers from culturally diverse communities in the western suburbs. The program materials will be published in English and Vietnamese and will include information on the nutritional value of common foods eaten by different ethnic groups. The program hopes to dispel some of the myths around food consumption and exercise in pregnancy.

**\$100,000**

**TO DEVELOP A HEALTH PROMOTION CAMPAIGN TO COMMUNICATE TO YOUNG PEOPLE THE ADVERSE EFFECTS OF DRUG USE**



**UTILISING AN APP AND WEBSITE**



## COMMUNITY HEALTH AND WELLBEING

### GRANTS TO SUPPORT INNOVATION AND THE EXPLORATION OF NEW IDEAS

#### PROACTIVE

##### Safe Steps Family Violence Response Centre Inc.

Community Advisor – Improvements and Reform \$50,000.00

##### HANZA Inc. (Homeshare Australia and New Zealand Alliance)

4th World Homeshare Congress \$10,000.00

##### Youth Development Australia Ltd (Youthworx)

Documentary 'Transmission' for use in schools \$15,200.00

#### INNOVATION

##### Financial and Consumer Rights Council Inc.

Dignity and Debt (Over 2 years) \$150,000.00

##### Geelong Ethnic Communities Council Inc.

Preparing CALD communities for engagement with Disability Services (Over 2 years) \$100,000.00

##### Penington Institute

Health promotion campaign for young people \$100,000.00

#### SECOND YEAR INNOVATION

##### Hello Sunday Morning

Hello Sunday Morning \$50,000.00

##### In 2 Life Community Services

Here for Life – Youth suicide prevention program \$50,000.00

##### Mind Australia

The Recovery College Project \$50,000.00

##### Palliative Care Victoria Inc.

Palliative Care Cultural Responsiveness Project \$151,500.00

##### Royal District Nursing Service Ltd (RDNS)

Dementia Care in CALD Communities \$88,123.00

#### EXPLORATION

##### Council on the Ageing (Victoria)

Elder abuse in Intergenerational relationships \$50,000.00

##### Eastern Volunteer Resource Centre Inc

Eastern get about pilot \$50,000.00

##### Victorian Multi Ethnic Slavic Welfare Association Incorporated

Ageing Well: Evaluating and improving the wellbeing of an elderly Slavic community \$50,000.00

##### Melbourne Recital Centre Public Fund

Share more music – Aged care pilot program \$30,200.00

##### The Macfarlane Burnet Institute for Medical Research and Public Health Ltd (Burnet Institute)

SHARP: Screening for Hepatitis in at-risk populations \$50,000.00

##### Victoria University – College of Health and Biomedicine

Growing a healthy baby: Getting the balance right in pregnancy \$49,849.00

##### Summer Foundation Ltd

Increasing affordable and accessible housing opportunities for young people in nursing homes \$33,547.00

### GRANTS TO BUILD THE CAPACITY OF THE CHARITABLE SECTOR

#### SECTOR CAPACITY

##### Ethnic Communities Council of Victoria Inc.

Victorian Ethnic and multicultural aged care project \$60,000.00

##### Carers Victoria Inc.

Supporting cross-sector learning and development \$67,500.00

##### National Disability Services Ltd

Building communities of practice \$49,000.00

#### SECOND YEAR CAPACITY BUILDING

##### Angel Light Link Public Fund

Volunteer Taskforce \$8,006.00

#### SURVIVE & THRIVE

##### Anxiety Disorders Association of Victoria Inc.

Connecting the community: (Over 2 years) \$40,000.00

##### Women's Mental Health Network Victoria Inc.

Safe and effective mental health services for women (Over 2 years) \$40,000.00

##### Life Education Victoria

Client Relationships, Fundraising and Marketing Manager position (Over 2 years) \$60,000.00

##### Emerge Australia Inc.

ReMember ME (Over 2 years) \$60,000.00

##### Karinya Counselling Centre

Karinya Care (Over 3 years) \$18,000.00

##### The Compassionate Friends Victoria Inc.

Growing support for our volunteers (Over 3 years) \$90,000.00

#### SMALL INFRASTRUCTURE

##### Eva Tilley Memorial Home Inc.

Improving access to support community connection \$9,800.00

##### The Jewish Cultural Centre and National Library Kadimah

Making the Kadimah safe \$10,000.00

##### Mayflower Reservoir

Individualisation of lifestyle program with care plan \$6,538.00

##### Gateway Social Support Options Inc.

Four new computers \$5,032.00

##### Maryville Aged Care Inc.

Phone system with handsets and utility trolley \$8,693.00

##### Brainlink Services Limited

Office and equipment update \$3,196.00

##### Meadow Heights Community Foundation

Community Kitchen Garden Infrastructure Project \$8,430.00

##### Ranges Community Health (Inspiro)

Diabetes Education Program \$7,540.00

#### MATERIAL AID

##### NCJW (Victoria) Community Services Inc.

Strengthening Seniors \$8,500.00

##### UnitingCare Regen

Basic Needs Project \$9,150.00

## CREATING AND INFLUENCING POSITIVE SOCIAL CHANGE

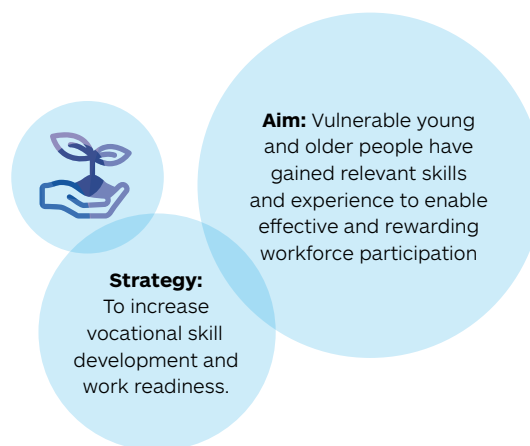
Through our Grants Strategy we are able to identify current and emerging issues within our four Impact Areas and create positive social change by providing grants to support innovation and capacity building in the not-for-profit sector.

### SNAPSHOT FROM OUR GRANTS STRATEGY

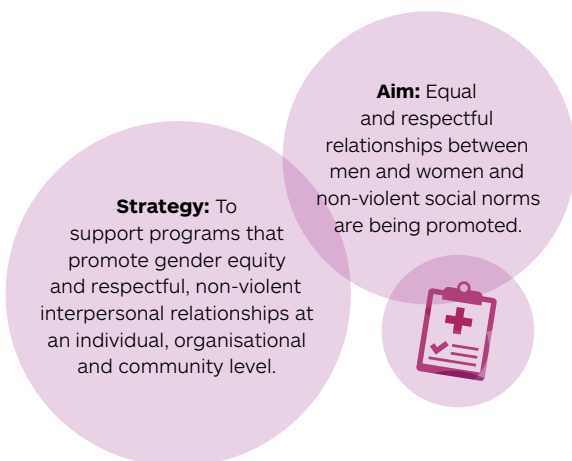
#### HOMELESSNESS, HOUSING AND DISADVANTAGE



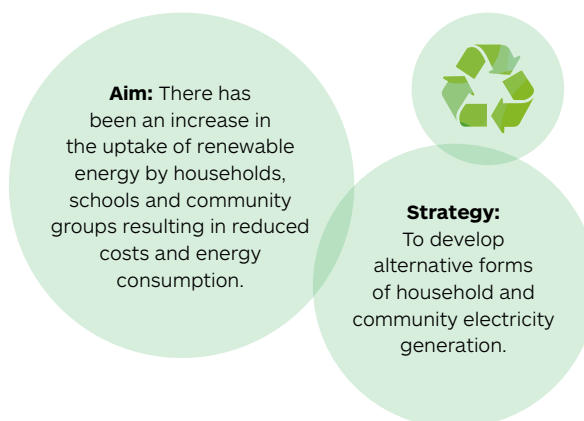
#### INCREASING LIFE OPPORTUNITIES



#### COMMUNITY HEALTH AND WELLBEING



#### SUSTAINABLE MELBOURNE



### GRANTS TO INSPIRE PHILANTHROPY AND INFLUENCE POSITIVE SOCIAL CHANGE

#### Youth in Philanthropy

Alumni Initiatives	\$30,000.00
--------------------	-------------

#### Social Traders

Social Enterprise Masters Conference	\$5,000.00
--------------------------------------	------------

#### Australian Community Philanthropy

Community Foundations Conference 2015	\$6,250.00
---------------------------------------	------------

#### Maribyrnong Festival Limited

Creating Civic Pride and Community Cohesion	\$50,000.00
---	-------------

#### ANDI

Indicators Project	\$100,000.00
--------------------	--------------

#### SECOND YEAR GRANTS

##### Australian Environmental Grantmakers Network

NGO Mapping Project	\$20,000.00
---------------------	-------------

##### Australian Women Donors Network

The Gender Wise Project – Strengthening Society	\$40,000.00
---	-------------



# SUSTAINABLE MELBOURNE

## FOODPRINT MELBOURNE

A collaborative research project between three leaders in food system research, University of Melbourne, Deakin University and Sustain Network, and funded by Lord Mayor's Charitable Foundation, aims to identify the potential economic, societal and environmental benefits of meeting more of Melbourne's food supply needs from within Victoria.

FoodPrint Melbourne is an exciting and dynamic project that will provide the critical data and evidence required to support a strong economic case for investment in strengthening local and regional food economies as well as protecting prime agricultural land. It aims to improve the resilience and local supply of Melbourne's food system in the face of environmental challenges such as decreasing land and water supplies, and the consequences of climate change.

Through a strong community engagement program, it will also encourage Melburnians to buy Victorian grown and produced food, strengthening our local food economy, reducing transport costs and creating healthy, vibrant foodie networks and communities.



## PROACTIVELY SUPPORTING AND ENCOURAGING ENVIRONMENTAL SUSTAINABILITY FOR HEALTHY AND ENGAGED COMMUNITIES

As a community foundation, Lord Mayor's Charitable Foundation is committed to supporting the creation of healthy and sustainable living environments for all people. The Foundation's Impact Area Sustainable Melbourne aims to embrace environmental sustainability as the key factor for improved quality of life for communities today and in the future.

The Foundation has identified five key aspects to supporting Melbourne to become a more sustainable city:

- Making the transition to a **low carbon economy** through the provision of renewable energy sources for housing, reduced waste and improved urban design;
- Building and maintaining **sustainable food systems** to provide access to healthy affordable food through increased allocation of urban green space for agriculture and community gardens and by promoting sustainable food production and distribution;
- **Protecting water eco-systems** by reducing the human impact on water systems and increasing the awareness of our impact on our bay and rivers;
- Preserving our heritage buildings for community use for enjoyment today and in the future;
- Building resilient communities to withstand the impact of a natural disaster which includes proactive measures to provide support and recovery services to affected communities.

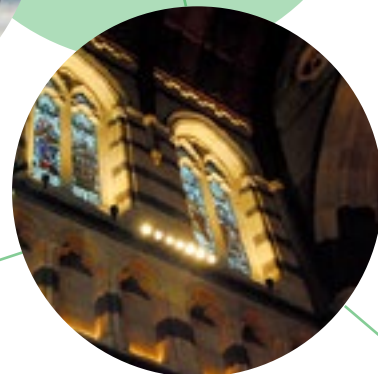
## GRANTS IN ACTION

Through various grants from Lord Mayor's Charitable Foundation, three organisations are helping to maintain healthy eco-systems and contribute to making Melbourne a sustainable city.

**Yarra Riverkeeper Association's** new patrol boat is used to monitor, protect and restore the health of the Yarra River which is a prime wildlife habitat and is a popular destination for recreational and nature-based activities, which are vital to community wellbeing and the city's sustainability.

**St Paul's Cathedral** recently replaced existing lights with LED lighting supporting the Foundation's aim to move to a low carbon economy. St Paul's is the most visited religious landmark by tourists while in Melbourne and has been a widely publicised and popular project. The Foundation's grant enabled the St Paul's community to complete its fundraising.

Located in the St Kilda Botanic Gardens, the **Port Phillip EcoCentre** is a wonderful example of environmental action in practice. The EcoCentre operates education and research programs as well as conservation campaigns and projects to protect and preserve our environment for future generations.



Above left: Yarra Riverkeeper Association.

Above: St Paul's Cathedral.

Left: Port Phillip EcoCentre.



## SUSTAINABLE MELBOURNE

### GRANTS TO SUPPORT INNOVATION AND THE EXPLORATION OF NEW IDEAS

#### PROACTIVE

##### Climarte

Art + Climate = Change 2015 \$20,000.00

##### Environmental Justice Australia

Yarra River Protection Act Project \$11,000.00

##### St Paul's Cathedral Melbourne

LED lighting project \$50,000.00

##### Centre for Education and Research in Environmental Strategies (CERES)

Food Producer Incubator for youth \$45,000.00

#### SECOND YEAR PROACTIVE

##### Australian Environmental Grantmakers Network (AEGN)

Mapping the eNGO Sector \$20,000.00

#### FOOD SECURITY INITIATIVE

##### Sustainable Living Festival

Grow It Local Melbourne \$50,000.00

##### University of Tasmania

Enabling a greater role for social  
enterprise in emergency food relief \$12,000.00

##### Community Pop-Up Markets Ltd

Community Grocer Social Enterprise – Phase 2 \$15,000.00

#### INNOVATION

##### University of Melbourne

FoodPrint Melbourne (Over 2 years) \$298,500.00

##### Port Phillip Ecocentre Incorporated

Baykeeper Catchment EcoSystem  
Education Project: Local Chapters  
& Winter By The Waves (Over 2 years) \$150,000.00

#### SECOND YEAR INNOVATION MAJOR

##### 2 & 5 Inc. (Food\_Skil)

Food Skil Social Enterprise \$50,000.00

#### EXPLORATION

##### The Foundation for Young Australians

Pavement to Parks: Parklet Trial \$49,500.00

##### University of Melbourne

(Melbourne School of Land and Environment)  
The potential of food waste as a soil conditioner \$49,000.00

##### Open Food Web Foundation

Making it easier for food hubs and farmers to  
collaborate on logistics \$50,000.00

### GRANTS TO BUILD THE CAPACITY OF THE CHARITABLE SECTOR

#### SECTOR CAPACITY

##### Environmental Justice Australia

Sustainability Law Lab: scoping and pilot \$59,938.00

##### Australian Environmental Grantmakers Network (AEGN)

Capacity Building for the Environment sector \$40,000.00

##### William Angliss Institute of TAFE / Sustain: The Australian Food Network

Sustain: The Australian Food Network –  
Supporting the Sustainable Food Movement \$55,000.00

#### SECOND YEAR CAPACITY BUILDING

##### Port Phillip Ecocentre Incorporated

EcoCentre's sustainable future:  
succession planning and staff development \$31,800.00

##### Australian Environmental Grantmakers Network (AEGN)

Mapping the eNGO Sector \$20,000.00

#### SURVIVE & THRIVE

##### Yarra Riverkeeper Association Inc.

The Yarra Riverkeeper Association (Over 3 years) \$81,000.00

##### Cultivating Community Inc.

Fitzroy Community Food Centre (Over 3 years) \$90,000.00

##### Mount Alexander Sustainability Group Inc.

Critical Operational Support and  
development of waste, recycling  
and solar programmes (Over 3 years) \$75,000.00

##### Greening Australia (Vic) Ltd

Seeds for success: sustaining biodiverse cities  
in a changing climate \$13,000.00

#### THIRD YEAR SURVIVE & THRIVE

##### Victorian National Parks Association Inc.

Better Bays Project \$20,000.00

#### SMALL INFRASTRUCTURE

##### Environment Victoria Inc.

Database upgrade \$10,000.00

##### Gould Group Limited

Upgrading our computer systems \$9,890.00

## ELDON AND ANNE FOOTE TRUST

### UNIVERSITY SCHOLARSHIP

Lord Mayor's Charitable Foundation was pleased to assist Mrs Anne Foote to establish and launch with the University of Canberra, the inaugural Eldon and Anne Foote Trust Elite Athlete Scholarship, which aims to help support students to balance both their athletic career and tertiary education.

The prestigious scholarships are funded by the Eldon and Anne Foote Trust, a charitable fund account of the Foundation, to honour Mr Foote who was passionate about sport.



Above: Mrs Anne Foote with scholarship recipients.

### ELDON AND ANNE FOOTE TRUST DONOR ADVISED GRANTS 2014/15

#### Monkey Baa Theatre Company

Creative development and production of 'The Peasant Prince' \$50,000.00

#### Sunnyfield

Western Sydney Arts Initiative \$31,760.00

#### Sylvanvale Disability Services

Big Blue Arts \$25,000.00

#### Critical Stages

Critical Stages NSW Regional and Remote Program \$20,000.00

#### Sydney Symphony Orchestra

2016 Regional NSW Tour \$25,000.00

#### Australian Youth Climate Coalition

Climate Leaders Training Program – July Bootcamp \$50,000.00

#### Guide Dogs Victoria

Guide Dog Sponsorship \$30,000.00

#### Feel The Magic Limited

Camp Magic – a place for grieving kids to grow \$30,000.00

#### Child Abuse Prevention Service (Inc) Sydney

Stay Safe For Kids \$25,900.00

#### Little Wings Limited

Little Wings Flight Program \$25,000.00

#### RSPCA ACT

Targeted desexing program to reduce unwanted ACT cats \$25,000.00

#### Queensland University of Technology (QUT)

Through A Child's Eyes: Investigating Early Vision Interventions and Academic Achievement \$49,494.00

#### Assistance Dogs Australia

Assistance Dogs Training \$22,000.00

#### Fighting Chance Australia

Work Experience Program \$15,000.00

#### Shepherd Centre, The

Ready Set Go – School readiness program for deaf children and their families \$20,000.00

#### KARI Aboriginal Resources Incorporated

KARI Scholarship Program \$20,000.00

#### Wheelchair Sports NSW

Rookies on a roll \$10,000.00

#### The Social Outfit

The Social Outfit's Retail Employment and Training Project \$38,000.00

#### Fitted For Work Ltd

Linking Young Disadvantaged Women With Work \$17,000.00

#### Learning Links

Reading and counting for Life – helping kids with learning difficulties to reach their potential \$20,000.00

#### 2realise

Brave \$23,160.00

#### Lions Youth Haven Inc.

The Farm Skills program for youth at-risk \$25,000.00

#### Pegasus Riding For The Disabled Of The ACT Inc

Building Skills and Self-Confidence in Young Adults With Disabilities \$30,000.00

#### Top Blokes Foundation

Building Blokes \$22,022.00

#### Yfoundations & Yhunger

Learning Through Doing: Yhunger Living Skills Resource Kit \$21,000.00

#### Volunteering SA & NT

Aboriginal Volunteer Program (Oodnadatta) \$20,000.00

#### Greater Sydney Conference Fund for Needy Persons, Seventh-Day Adventist Church (for Norfolk Island FoodCare)

Food Aid – Norfolk Island FoodCare \$20,000.00

#### University of Canberra

Eldon & Anne Foote Scholarship for Elite Athletes (Over 3 years) \$160,000.00

The Eldon and Anne Foote Trust supports our Innovation grants. Distributions from the Eldon and Anne Foote Charitable Fund contribute to our Capacity Building grants.



# INSPIRING PHILANTHROPY

## CELEBRATING PHILANTHROPY

Lord Mayor's Charitable Foundation celebrated Melbourne's generosity and charitable sector at its annual Inspiring Philanthropy event held at Zinc, November 2014. It also recognised the extraordinary generosity of the late Mr Eldon Foote, a successful lawyer, businessman and philanthropist, and welcomed Mrs Anne Foote to the event as the Foundation's guest of honour.

270 grant recipients and donors heard from one of the Foundation's charitable fund account holders: well-known Melbourne philanthropist and businessman, Mr Paul Wheelton OAM, as he took guests on a journey of his own philanthropy, encouraging others to consider their philanthropic aspirations, while discussing the benefits of giving through a community foundation.

The Foundation's CEO Catherine Brown said, "The generosity of Mr Foote and his substantial gift will continue to have an enormous impact on the health and wellbeing of communities in Melbourne and throughout Australia."

"It's a very special and extraordinary gift in perpetuity and the Foundation will forever honour and celebrate Mr Foote's philanthropy. It has been a significant event in the Foundation's history."

Mr Foote's bequest to the Foundation was acknowledged as one of Australia's largest philanthropic gifts ever received, and in recognition and appreciation, the Foundation launched a short film to honour and celebrate the life of Mr Foote.



## PHILANTHROPIC SERVICES

The Lord Mayor's Charitable Foundation has been built upon, and continues to grow from, the enormous generosity of our donors. Philanthropic Services provides advice and service to donors who engage with the Foundation on a number of different levels, from regular givers who donate to the Foundation on a monthly basis to donors who prefer the Foundation to distribute their funds to charities on their behalf. Our donors also include charitable fund holders, memorial fund holders, community fund holders and members of our collective giving circles.



## LEAVING A LEGACY

The power of bequests to enable the Foundation to broaden its programs and activities cannot be underestimated as evidenced by the grants made through the estate of Eldon Foote.

The Lord Mayors Charitable Foundation is again grateful for the generous contributions received from Percy Baxter Charitable Trust (Perpetual Trustees) \$125,000, Collier Charitable Fund \$350,000 and William Angliss Charitable Fund \$125,000.

**Elzbieta Kobylanska** came to Lord Mayor's Charitable Foundation because she wanted to create an enduring memory of her father, Senator Tadeusz Kobylanski. Elzbieta wanted this memory to demonstrate the love, commitment and compassion he displayed so courageously over his lifetime in Poland to his family and fellow citizens.

In memory of her father, Elzbieta established a charitable fund account to continue the ethos of caring for the disadvantaged that was such a strong family tradition. Sadly Elzbieta passed away in 2014. Through her generous bequest to the Foundation, Senator Tadeusz Kobylanski and Elzbieta will be forever remembered in their perpetual support of essential services that care for young and older people particularly Indigenous youth who are struggling to make ends meet.

**Dulcie Richards** was a cherished and generous donor to the Foundation. As a tireless worker in her local community of Frankston, Dulcie's compassion had no geographical boundaries and she also provided support for women in third world countries such as Africa and Cambodia through her long-time support of Soroptimist International.

Dulcie was an ex-servicewoman who maintained a strong sense of civic duty and activism throughout her life as demonstrated through the range of charities she has supported through the charitable fund account, established with her now deceased husband Alan in 2003. Her graciousness, warmth and boundless energy are the qualities that defined Dulcie's life and the Foundation is extremely grateful for Dulcie's bequest that will ensure her legacy continues in perpetuity.

Top: Elzbieta and Robert Masters, former Chairman of the Foundation.

From left to right : Cr. Glenn Aitken, Frankston City Council; Dulcie's daughters Penny and Christine Richards and Judy Buchan, Senior Manager Philanthropy at Lord Mayor's Charitable Foundation.

Left: Mrs Dulcie Richards.

Opposite page: The Foundation's Chairman Daniel Leighton with Mrs Anne Foote, Mr Paul Wheelton OAM and Catherine Brown, CEO.

## CHARITABLE FUND ACCOUNTS

The Lord Mayor's Charitable Foundation manages the administration and compliance of over 200 Charitable Fund Accounts within our Public Ancillary Fund. Many of those who have established Charitable Fund Accounts with the Foundation have done so because they feel secure with the Foundation's established history and governance processes. A Charitable Fund Account can be established to support the Foundation's programs or to recommend grants to charities. It is a wonderful way to remember a loved one or to establish a pattern of giving in one's lifetime that will continue into the future.

A & D Richards Family Fund  
 A 2 Z King Family Fund  
 Allan Douglas (Doug) McPhee Fund  
 Anderson Fund  
 Andrew James Lancashire Memorial Fund  
 Angela Young Charitable Fund  
 Ann Rusden Fund  
 Anne White Fund  
 Antaeus Charitable Fund  
 Association of Civilian Widows Victoria Fund  
 ASW Fund  
 Australian Universities Classical Scholarship Fund  
 Barbara Leighton Fund  
 Barry & Joan Medwin Family Fund  
 Berkovic-Fraenkel Fund  
 Bethany Wake Fund  
 Borchardt Fund  
 Boyce Family Fund  
 Brian & Ella Talbot Family Fund  
 Brown Rochford Family Fund  
 Bruce Niven Fund  
 Buchan Family Fund  
 Byrne Fund  
 Caine Fund  
 Caitlin Darbyshire Fund  
 Cameron Family Fund  
 Capodanno Fund  
 Caswell Charitable Fund  
 Chanelle's Heaven Sent Blessing Memorial Fund  
 Cheryl & David Baer Fund  
 Children's Protection Society Fund  
 Chips Charitable Fund  
 Chloe Alexandra Rutherford Fund  
 Chris Dalwood Scholarship Fund  
 Clara Sims Memorial Fund  
 Commercial Travellers' Association Charitable Fund  
 Connon Family Fund  
 D & H Saltzman Family Memorial Fund for Sheryl  
 Daryl Leslie Zvi Rosenfield Fund  
 Daryl Manley Fund  
 David & Miriam Rich Fund  
 DD & SS Johnston Fund  
 Di Power Memorial Fund  
 Donald & Shirley Lugg Fund  
 Doos Family Fund  
 Dora & Trevor Nixon Fund  
 Dorn Family Fund

Dorothy Jean Ineke Fund  
 Duckie Charitable Fund  
 Duncan Family Fund  
 E Bennett Fund  
 Easden Family Fund  
 Education for All Fund  
 Eldon & Anne Foote Donor Advised Fund  
 Ellis W Waters Fund  
 Emanpea Fund  
 Emerson - Sullivan Fund  
 Eric Burton Memorial Fund  
 Evan Spurway Fund  
 Falkinger Heritage Fund  
 Family Friends & Furry Animals Memorial Fund  
 Freeman Family Fund  
 Friends of Caroline Chisholm Society Fund  
 Friends of Rumbalara Fund  
 Fund for Buddy  
 Fund for Rusty  
 Gary Singer and Geoffrey Smith Fund  
 Geoffrey & Pauline Green Fund  
 Gerald Friedlander Family Fund  
 GGS Fund  
 Giuliano Family Fund  
 Greg Blizzard Memorial Fund  
 Gringlas Family Fund  
 Guiding Light Fund  
 Harris Family Fund  
 Heath Cosgrove Charitable Fund  
 Heather Bradley Memorial Fund  
 Helen & Peter Devereux Fund  
 Henry Buck's Fund  
 Hermits of El-Shaddai Charitable Fund  
 Homestead Financial Group Fund  
 Hope Rutherford Reilly Fund  
 Hopkins Knight Family Fund  
 Illingworth Family Fund  
 In memory of Servicemen & Women who did not return Fund  
 Izaak Robison Family Fund  
 J & NE Brown Fund  
 J F Thompson Charitable Fund  
 James Cross Memorial Fund  
 Jan Slaney Fund  
 Jarrod Alexander Green Memorial Fund  
 Jenny & Jim Gardiner Fund  
 Jill Chapman Fund  
 Jones Family Fund  
 John D & Dagnija Balmford Fund  
 Joshua Bendel Fund  
 Judy (Gelb) Feiglin Memorial Fund  
 June & Peter Stringer Fund  
 June O'Brien Whitling Memorial Fund  
 Kasey-Anne Lymphoma Charitable Fund  
 Kathleen Farrow Fund  
 Kathy & George Deutsch Family Fund  
 Kaufman Family Charitable Fund  
 Keith & Alison May Williams Fund  
 Kevin & Jacqui Clancy Family Fund

Knight Family Fund  
Kolganova and Foster Family Fund  
Lady Mayoress' Committee Fund  
L Semmens Fund  
Lawrence & Joan Cohn Fund  
Left Hand Fund  
Leighton Family Charitable Fund  
Loftus-Hills Fund  
Lord Mayor's Children's Fitness Fund  
Lyn Grigg Family Fund  
Lyons Family Fund  
M & B Jenkins Fund  
M J Trehwella Trust  
M Recht Accessories Fund  
MacRobertson Girls High School Fund  
Malcolm Grant Brown Fund  
Margaret Mitchell Fund  
Mark Kenneth Thorn Charitable Fund  
Marshall Fund  
Marshall-Roth Charitable Fund  
Masky Beacon Charitable Fund  
Meg & Frank Sims Fund  
Melbourne Women's Charitable Fund  
Melissa Ryan Princess Fund  
Melvie Banks AM DSJ Fund  
Mercedes Benz Australia-Pacific Fund  
Michael Martin Fund  
Milledge Family Fund  
Miller Family Fund  
Miller Fund  
Minyaka Fund  
Moffatt Family Fund  
Morrison Family Fund  
Motet Fund  
NJN Charitable Fund  
Norm & Pat Draper Charitable Fund  
North Bridge Fund  
O'Bryan Family Charitable Fund  
Oldfield Family Fund  
Olga Edith Lowe Memorial Fund  
Oliver Charitable Fund  
One Life Sports Foundation Fund  
Onemda Fund  
OPA! Charitable Fund  
Oxford Houses Fund  
Pam Baker Fund  
Patricia Cosh Trust  
Patricia Farrant Fund  
Paul & Ruth Permezel Trust  
Payne Family Fund  
Pepin Family Fund  
Peter & Karen Anderson Family Fund  
Possibility Australia Fund  
Priestley Family Fund  
PRL Charitable Fund  
Rayment Family Fund  
RC & EM Bennett Fund  
Red Bird Moments Fund  
Red Bowl Charitable Fund  
Renshaw Fund

Returned & Services League Fund  
Richard & Gwenyth Higgs Fund  
Robert Croft Fund  
Rory McCaffrey Reconciliation Fund  
Sally Graham Memorial Fund  
Sawers & Sherman (K I A 1916) Memorial Fund  
SB08 Conference Scholarship Fund  
Senator Tadeusz Kobylanski Fund  
Senza Nome Charitable Fund  
Shirley KB and David A Secomb Fund  
Simon Buckley Memorial Fund  
SJD Charitable Fund  
Slome-Topol Family Charitable Fund  
Smyth Family Fund  
Society to Assist Persons of Education Fund  
Strathdon Community Perpetual Fund  
Supporting Angels Charitable Fund  
Sweet Princess Charitable Fund  
Swinburne Philanthropy Alumni Fund  
Tan Family Fund  
Tom & Ruth O'Dea Fund  
Tom & Zillah Diamond Fund  
Tozer Family Fund  
Victor & Shell Sykes Family Fund  
Vulcan Family Fund  
W H Overall Fund  
Walmsley Family Fund  
Warburton Family Fund  
Warin Chiewvej & William Holder Charitable Fund  
Weber Jenkin Family Fund  
Wendy Hurse Fund  
Weston Street United - Masonic Fund  
Wexler Family Fund  
Wheelton Family Charitable Fund  
White Fang Fund  
Wilbow Group Fund  
Wilfrid & Joan Minson Fund  
William A Lyon Fund  
Wootton Family Fund  
Zdraveski Charitable Funds 1, 2 & 3.

**PLEASE ENJOY THE FOLLOWING STORIES  
THAT INSPIRE PHILANTHROPY FROM  
OUR CHARITABLE FUND ACCOUNT  
HOLDERS, GIVING CIRCLES AND  
COMMUNITY CHARITABLE FUNDS.**

### MARGARET MITCHELL FUND

Retired school principal Margaret Mitchell, has a life-long passion for teaching, education and philanthropy.

Inspired by her two aunts, Margaret joined the International Soroptimists Club in 1969 and more recently has established a charitable fund account with the Foundation.

"I have had a much better life both personally and professionally here in Australia and I wanted to give something back to the country that had done so much for me. My charitable fund account provides me with the convenience of not having to worry about supporting so many fundraising appeals, and I can support the work of the Foundation through my charitable fund account.

"As a former teacher, I very much like the Foundation's Youth in Philanthropy program which enables students to be involved in philanthropy. It is a learning experience that will continue through their lifetimes."

"I've been involved in a lot of project work, mostly in support of the education of women and girls with the Soroptimists. I truly believe that if you educate a woman, you educate her family and the whole community benefits – it fits beautifully with how I was brought up.

"You can be charitable as an individual, but if you become a member of a charitable group such as the Soroptimists, you can do so much more together and that's what is so wonderful about the Foundation too."

Through her charitable fund account with the Foundation, Margaret has nominated to support projects for women and children, as well as education programs.

Below: Margaret Mitchell, John Coustley, Ruth and Tom O'Dea.

### COMMERCIAL TRAVELLERS' ASSOCIATION

The Commercial Travellers' Association of Victoria closed its membership in 2014 but will continue to support the Melbourne community with the establishment of a charitable fund account with Lord Mayor's Charitable Foundation. Since its inception in 1880, the Commercial Travellers' Association has demonstrated a long tradition of supporting the community.

John Coustley, outgoing President of the Association, proudly recalled the organisation's giving spirit; "We've always had a culture of philanthropy including a members' superannuation scheme, mortuary benefits and scholarships awarded to members' children. We also made charitable donations to Lord Mayor's Charitable Foundation and several hospitals together with academic prizes for outstanding commerce students at The University of Melbourne and LaTrobe University."

As a regular and significant donor to the Foundation for 45 years, John notes that the Association's decision to establish a charitable fund account was natural, "We've been donating to Lord Mayor's Charitable Foundation for as long as I can remember...Establishing a charitable fund account is a way to ensure the Association's name continues in perpetuity."

Funds from the Commercial Travellers' Association of Victoria charitable fund account will support homelessness initiatives in Melbourne.

### RUTH AND TOM O'DEA

For Ruth and Tom O'Dea philanthropy is almost genetic, embedded in their DNA since childhood. They both grew up in families who unquestionably believed should give to those who are less fortunate – it was simply a part of who you were and what you did.

The impact of their families' strong charitable ethos continues to benefit our community today. After a long history supporting the Caring Society, Ruth and Tom started the 'Tom and Ruth O'Dea Fund' with Lord Mayor's Charitable Foundation in 2002. Ruth said that starting the fund was 'a simple choice'.

"We wanted the process to be streamlined and easy and we knew who and what we wanted to support. It also meant that we didn't have to respond to continuous letters from charities requesting donations."

Ruth and Tom see their fund as a legacy for the future and in line with their vision of big picture philanthropy, their giving is now focussed on medical research. Long term thinking for a long-term cause.

Retirement hasn't slowed Ruth and Tom down. Both view 'giving' as more than just a financial donation and really embrace the philanthropic tenets of time, talent and treasure. Amongst other things, they continue to actively volunteer their time and professional skills to make a fundamental and tangible difference to the day-to-day lives of small arts-based organisations.

For Ruth and Tom, philanthropy is very much a lifelong journey, and they believe the Foundation has a critical role in making this journey easier and more fulfilling.





## COMMUNITY FUND ACCOUNTS

As part of the Foundation's support for place based philanthropy, we are proud to hold ten municipal Council community fund accounts within our Public Ancillary Fund. The Foundation looks after the administration and compliance associated with these community fund accounts as well as providing support with grants advice and fundraising.

The Foundation was pleased to host a Forum for the community funds that included fundraising advice from Sean Triner of Pareto Fundraising, along with presentations from Frankston, Hume and Kingston Community Funds on engaging their local business and residential community. This Forum was an important networking and information sharing event.

The support of local business is a keystone to the success of community funds and the City of Yarra Room to Create Fund was thrilled by the generosity of Nelson Alexander's Fitzroy Office. A \$25,000 donation was made as part of Nelson Alexander Real Estate's annual Foundation Day, held on 30 May, where each of its thirteen offices donate the professional fee from one of their auctions to a chosen local charity. Room to Create is the first charitable fund account established under the Foundation to be devoted exclusively to creating and preserving creative spaces. The Fund is a great way to ensure that the arts remain an important part of the City of Yarra tapestry.

The Community Fund Account program includes Banyule Charitable Fund, Brimbank Charitable Fund, Casey Cardinia Community Fund, Frankston Charitable Fund, Hume Charitable Fund, Kingston Charitable Fund, Manningham Charitable Fund, Mornington Peninsula Charitable Fund, Wyndham Charitable Fund, Yarra City Council 'Room to Create' Charitable Funds.

Right: Nelson Alexander presents a donation of \$25,000 to Room to Create.

Below: Community Funds Forum 2015.



## COMMUNITY GRANT DISTRIBUTIONS

### Brimbank Charitable Fund **\$14,073.00**

Ardoch Youth Foundation Ltd	\$1273.00
Jesuit Social Services Ltd	\$2800.00
Migrant Resource Centre North West	\$5000.00
Melbourne City Mission/WYPIN	\$5000.00

### Casey Cardinia Community Fund **\$10,000.00**

Outlook (Vic) Inc.	\$5,000.00
Special Olympics Australia – Vic	\$5,000.00

### Frankston Charitable Fund **\$72,406.00**

Ardoch Youth Foundation	\$2200.00
The New Hope Foundation Inc.	\$2500.00
Pregnancy Assistance Frankston Inc.	\$5000.00
Second Bite	\$5000.00
The Alannah and Madeline Foundation	\$4400.00
Vision Impaired Peoples Aid Foundation of Vic Inc.	\$1500.00
Women's health in the South East Inc.	\$2500.00
SalvoCare Eastern (The Salvation Army)	\$49,306.00

### Hume Charitable Fund **\$20,397.00**

Careworks Sunrangers Inc.	\$2,500.00
Riding for the Disabled Association of Vic Inc.	\$5,000.00
Lentara Uniting Care	\$5,000.00
Meadow Heights Community Foundation	\$3,100.00
Northern Health	\$4,797.00

### Kingston Charitable Fund **\$57,223.00**

Chelsea Benevolent Society Inc.	\$2,000.00
Springvale Benevolent Society Inc.	\$3,000.00
Bayside Community Information and Support Services Inc.	\$5,000.00
Bayside Community Care Incorporated	\$3,000.00
Make a Difference Dingley Village Inc.	\$4,000.00
Lighthouse Foundation	\$1,500.00
Kingston City Church Inc.	\$6,000.00
Victorian State Emergency Services Chelsea unit	\$3,000.00
Melbourne Anglican Benevolent Society Inc.	\$3,200.00
Holy Trinity Parish	\$10,000.00
Mentone Community Assistance and Information Bureau Inc.	\$5,000.00
Taskforce Community Agency Inc.	\$25,000.00

### Manningham Charitable Fund **\$42,281.00**

LinC Church Services Network (Manningham) Inc.	\$7500.00
Doncaster Community Care & Counselling Centre	\$10,469.00
Manningham Centre Association Inc.	\$11,512.00
REAL Inc.	\$6000.00
Manningham Community Health Services Ltd	\$6800.00

Banyule Charitable Fund, Mornington Peninsula Charitable and Wyndham Charitable Fund have chosen to build their funds further this year to enable larger grant amounts in future years.

## COLLECTIVE GIVING CIRCLES

Collective giving circles have an extraordinary ability to engage and inspire individual donors who unite over similar values and causes to collectively decide how and where they will grant their pooled donations. Giving Circles can operate in many different ways and we are delighted to host two of Melbourne's most prominent Circles.

**IMPACT100 Melbourne** has successfully completed its second year building upon its membership and exceeding fundraising expectations. Each year IMPACT100 Melbourne chooses a theme and in 2014 it was Homelessness. Over 140 people at the grants ceremony with many donors matching funds raised, IMPACT100 Melbourne awarded McAuley Community Services for Women \$86,810 on the night from the \$117,000 raised from pooled donations. The three runner-up charities received \$10,000 each for their participation in the event.

**Melbourne Women's Fund (MWF)** is a collective giving circle that seeks to create real and sustainable change by funding programs and services that address health and education issues facing women and families in our community. In their first year of granting, the Melbourne Women's Fund received enormous support and awarded their signature grant of \$60,000 to Women and Mentoring (WAM) Limited. The smaller grant award was given to the Victorian Immigrant and Refugee Womens Coalition Incorporated for \$15,000. The other four finalists received a merit award of \$1,500.

The Lord Mayor's Charitable Foundation is excited to promote and support collective giving circles that provide a pathway for new donors to become better educated about strategic philanthropy. We are very proud of the achievements of both IMPACT100 Melbourne and the Melbourne Women's Fund and their commitment to philanthropy.



Above left to right: Committee Members Georgie Kelly; Miff Blythe; Rikki Andrews; Catherine Brown, CEO at Lord Mayor's Charitable Foundation; Michelle Varcoe; Julia Keady; Vanessa Meachem. Seated: Alex Pattison; Rich Brown and Chris Wilson.



Above left to right: Lyn Brodie, MWF; Patricia Burke, MWF; Mary Latham, CEO of WAM – Women and Mentoring; Gillian Hund, MWF; and Sam Payne, Board member WAM.

## LADY MAYORESS' COMMITTEE

The Lady Mayoress' Committee, established in 1959, once again hosted many fundraising events throughout the year to raise funds for charitable organisations supporting young people in our community. The events included a fundraising lunch hosted by Mrs Jeannie Pratt at Raheen raising \$22,320 and the annual Christmas Lunch which was held at the RACV Club. Other events included a Bazaar and Pop Shop at the Melbourne Town Hall and 'Movie and Lunch' event.

### LADY MAYORESS COMMITTEE GRANTS 2014/15

Kage	\$2,000.00
Caroline Chisholm	\$4,000.00
Polyglot Theatre	\$10,000.00
Melbourne Theatre Company for young people (matched by the Foundation as a Proactive Grant to be a combined grant of \$25,000)	\$12,500.00



Above: Guests at the annual Lady Mayoress' Committee Christmas Lunch.

## YOUTH IN PHILANTHROPY

**The Youth in Philanthropy program was established by the Lord Mayor's Charitable Foundation in 2002 to help young people learn about philanthropy, social awareness and community leadership. The aim of the program is to inspire young people to use their enthusiasm, creativity and energy to begin a life-long engagement in philanthropy and giving through activities that have a positive impact on the communities they live.**

The Foundation appoints experienced mentors from our Board, staff and donors, who guide students through the grant-making process including assessments of funding applications, site visits, interviewing potential grant recipients and making funding recommendations. The program is also designed to facilitate school and student involvement with the Foundation and gain an understanding of current community issues. Each school is allocated \$15,000 from the Foundation's grants budget to distribute to eligible charities.

Values such as integrity, empathy, responsibility and respect, are highly visible in the schools that participate in the Youth in Philanthropy program, values that resonate with the Foundation's vision of social inclusion and cohesion for all, and our mission of increasing life opportunities for disadvantaged members of our community. 21 Schools participated in the 2014 Youth in Philanthropy Program.



Above: Youth in Philanthropy students with Kim Sullivan, Youth in Philanthropy Manager (centre).



Above: Anita Hopkins Senior Manager Grants Program and Community Initiatives (right).

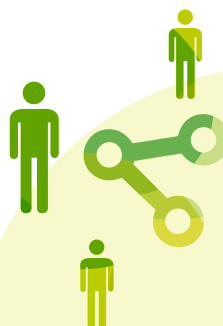
## YOUTH IN PHILANTHROPY ALUMNI

The Alumni program is an extension of the secondary schools program and offers past participants of the secondary schools program, friends and peers, opportunities to engage in philanthropy, grantmaking and social entrepreneurship through a series of tailored events, grantmaking and active community engagement. The program will support young people to gain a deeper understanding of social and environmental issues and how they individually and collaboratively, can shape the future of our communities. The idea of a Youth in Philanthropy Alumni program grew from the desire of the students to stay connected to the world of philanthropy beyond their participation in the Secondary Schools program.

The Alumni Grants Committee was introduced in 2015 in order to provide young people connected with the Foundation either through the Youth in Philanthropy or Next Generation Programs an opportunity to contribute to our community grantmaking. The Alumni Grants Committee led the evaluation and recommendation process for the Foundation's In Our Community Grants. Grants of between \$500 and \$5,000 are offered. The Committee was supported by Foundation staff to review and evaluate a shortlist of applications and provided funding recommendations to the Foundation's Board.

21

**SCHOOLS PARTICIPATED IN THE 2014 YOUTH IN PHILANTHROPY PROGRAM**



**THE IDEA OF A YOUTH IN PHILANTHROPY ALUMNI PROGRAM GREW FROM THE DESIRE OF THE STUDENTS TO STAY CONNECTED TO THE WORLD OF PHILANTHROPY**



# YOUTH IN PHILANTHROPY GRANTS 2014

## AUSTRALIAN INTERNATIONAL ACADEMY

### Leukaemia Foundation

Young Bloods \$6,500.00

### Songlines Aboriginal Music Corporation

The Songlines Individual Support and Mentoring Program \$3,000.00

### Wintringham

Christmas function for community and outreach clients \$5,500.00

## BRIGHTON GRAMMAR SCHOOL

### Alternative Technology Association

Power to the People \$2,500.00

### Sacred Heart Mission

Sacred Heart Mission Meals Program \$5,000.00

### The Andrew Dean Fildes Foundation (SHINE)

Intensive treatment programs for children with language learning difficulties \$7,500.00

## BROADFORD SECONDARY COLLEGE

### Caroline Chisholm Society

Providing material aid to young vulnerable families \$7,000.00

### OnTrac with Peter Mac

Vocational training program for young people diagnosed with cancer \$6,500.00

### Zoos Victoria

Indigenous Garden: Protection and celebration of the Scar Tree \$1,500.00

## CAMBERWELL GRAMMAR SCHOOL

### Australian Conservation Foundation

Beyond Muckatj: community action for responsible management \$1,500.00

### FareShare

Soup for Vinnies Vans \$9,500.00

### E.motion 21

Celebrating World Down Syndrome Day \$4,000.00

## CARRUM DOWNS SECONDARY COLLEGE

### Berry Street

Life Story Pilot Project \$6,790.00

### Hands on Learning

Dromana Primary School (DPS) Transition and Boat Shed Renewal \$4,050.00

### Justice Connect

Women's Homelessness Prevention Project \$4,160.00

## HUME CENTRAL SECONDARY COLLEGE

### Centre for Multicultural Youth

'This is Me' – Migrant and Refugee Young People Video Storytelling Project \$4,000.00

### Friends of the Earth

What Energy Future for Victoria? Protecting the Food Bowl \$1,500.00

### Kids off the Kerb

Whitegoods & E-Waste Recycling \$9,500.00

## IVANHOE GRAMMAR SCHOOL

### Eastern Emergency Relief Network

Material Aid / Emergency Provisions \$5,500.00

### St Mary's House of Welcome

Hygiene Program \$3,340.00

### Opening the Doors Foundation

The Upward Spiral \$6,160.00

## LAURISTON GIRLS SCHOOL

### The Big Issue

The Big Issue eClassroom Development Project \$3,500.00.00

### Odyssey House

Young People at Risk Therapeutic Camp \$8,000.00.

### Boroondara Aged Services Society

Purchase of Social Support Commuter Bus \$3,500.00

## THE KING DAVID SCHOOL

### Yarra Riverkeeper Association

Reconnecting Melburnians with their river \$5,500.00

### Asylum Seeker Resource Centre

Social and Community Development \$3,340.00

### Victorian Immigrant and Refugee

Women's Centre Case Girls Leadership Course \$6,160.00

## MAC.ROBERTSON GIRLS HIGH SCHOOL

### 100 Story Building

Mapping Footscray \$3,500.00

### Foodbank Victoria

Foodbank Victoria's Mobile FoodShare \$8,000.00

### The Social Studio

Social Change through design \$3,500.00

## MELBOURNE GIRLS COLLEGE

### Diamond Valley Foodshare

Diamond Valley Foodshare 2014-15 \$5,000.00

### Royal District Nursing Service

Healthcare and Nutritional Support for Melbourne's Homeless \$6,700.00

### Good Cycles

The Good Cycles Bike Shed \$3,300.00

## MELBOURNE GRAMMAR SCHOOL

### Hello Sunday Morning

Hello Sunday Morning app \$6,200.00

### Environment Victoria

Reclaim Victoria Internship Program \$2,800.00

### Kids Under Cover

Kids Under Cover Studio Program Coordinator \$6,000.00



## YOUTH IN PHILANTHROPY GRANTS 2014 CONTINUED

**MELBOURNE HIGH SCHOOL****School for Social Entrepreneurs**

SSE Melbourne Accelerator Program \$3,500.00

**Cool Australia**

Conversations with Heroes \$5,500.00

**Interchange Inner East**

Camp Out with Interchange \$6,000.00

**METHODIST LADIES COLLEGE****Alzheimer's Australia (Vic)**

The Forest Project \$5,780.00

**The Reach Foundation**Leadership Development Scholarships:  
Transitioning Young People into Young Leaders \$5,920.00**Epilepsy Foundation of Victoria**

Family Respite Getaway \$3,300.00

**PARADE COLLEGE****Waverley Industries**

Canteen Equipment Update \$3,500.00

**Footscray Community Arts Centre**

Emerging Cultural Leaders Projects Delivery 2015 \$5,500.00

**Western Chances**

Western Chances Scholarship Program \$6,000.00

**MT SCOPUS MEMORIAL COLLEGE****Guide Dogs Victoria**'Ready, Set, Play' Sports Program for Vision  
Impaired Children \$5,780.00**Kids Own Publishing**

Bike-a-Book \$5,920.00

**Church of All Nations Community Support Agency**African Families Learning Program:  
Consultation and Review \$3,300.00**RINGWOOD SECONDARY COLLEGE****Kevin Heinze Garden Centre**Relationship Education and Training  
for Young People with Disabilities. \$3,500.00**The Song Room**

Arts Connect \$5,000.00

**Women with Disabilities Victoria**Enabling Girls – a leadership course  
for younger women with disabilities \$6,500.00**ST MICHAEL'S GRAMMAR SCHOOL****Polyglot Theatre**

Voice Lab \$5,500.00

**Environmental Justice Victoria (formerly  
Environmental Defenders Office)**

Climate Justice – making it real \$2,000.00

**St Kilda Youth Service**

Student 3 Day Camp \$7,500.00

**TRINITY GRAMMAR SCHOOL****Ardoch Youth Foundation**

Learning Essentials \$7,000.00

**Disability Media Inc.**

Ready for Work – Portfolio for Students \$2,000.00

**The Summer Foundation**Short Film on Social Inclusion:  
giving a voice to the voiceless \$6,000.00**UNIVERSITY HIGH SCHOOL****Children's Protection Society**

Toy Box Support Playgroup \$8,000.00

**The Substation**

TALK&gt;WRITE&gt;MAKE&gt;LEARN&gt; \$2,200.00

**River Nile Learning Centre**

Outdoor Education Program \$4,800.00

**WERRIBEE SECONDARY COLLEGE****Gateway Social Support Options**

Health Food Health Communities \$7,000.00

**Westside Circus**

JumpStart \$2,000.00

**Student Youth Network (SYN Media)**

Mental Health Perspectives \$6,000.00

## NEXT GEN PHILANTHROPY

The Next Generation Family Philanthropy program, launched in 2014, offers donors the opportunity to deepen their experience and knowledge of philanthropy through tailored engagement with the Foundation and the charitable organisations it supports. The program provides opportunities to pro-actively participate in activities that create a positive social and environmental impact in the community. The Next Gen program profiles topical issues in our community enabling young philanthropists to help address these issues. The program also provides opportunities for donors to connect with other donor families engaged in philanthropy through the Foundation.

Left to right: Zach, Jeremy and Ali King.



# FINANCE AND GOVERNANCE

## BEING ACCOUNTABLE

The following section includes a Finance and Operations report followed by an extract of the annual audited Financial Report.

The Foundation's Board structure includes the Board's Investment Committee, Audit and Risk Committee, Governance and Nominations Committee and Strategic Marketing Committee. The Foundation has an active internal audit program and a Risk Management program. The Board completed work on the Risk Appetite during the year. Strategic asset allocation advice is provided by Frontier Advisors.

### LORD MAYOR'S CHARITABLE FOUNDATION CONSOLIDATED GROUP

## FINANCE & OPERATIONS REPORT

The Financial Report on the following pages is an extract of the consolidated annual audited financial reports of the Board of Management of the Lord Mayor's Charitable Fund, the Lord Mayor's Charitable Fund (the Public Ancillary Fund) and The Eldon and Anne Foote Trust. The Public Ancillary Fund includes more than 200 subfunds (charitable fund accounts).

### INCOME

Total income from operations represents corpus revenue, general revenue and unrealised gains/(losses) on investments of \$24.072m, (2014: \$63.582m). Corpus revenue of \$25.744m was \$19.580m less than the previous year due to unrealised losses on other financial assets at 30 June 2015, and the prior 2014 year including a major bequest distribution.

Corpus revenue includes \$11.345m in direct investment income for the year (2014: \$10.112m). The material increase is due to prior year bequest amounts and new charitable funds being fully invested for the full 2014/2015 financial year. Included in corpus revenue is \$9.117m in realised capital gains on the sale of equity investments (2014: \$ 1.287m).

### EXPENSES

Total expenses of \$3.605m (2014: \$3.447m) increased marginally by \$158k as additional resources were allocated to the delivery of the Foundation's Granting Programs, Community Initiatives, and Philanthropic Services. An upgrade of the Foundation's financial management, grants management and donor management IT system to an integrated, contemporary system also commenced. This financial year expenditure was specifically incurred associated with the Foundation's further development of Foundation Initiatives: Affordable Housing, Older Women's Economic Wellbeing, Food Security and Youth Employment Opportunities. The Youth in Philanthropy Program continued to include a record twenty two secondary schools across metropolitan Melbourne and an increased granting budget.

### GRANTS

Grants and Initiatives are reported by Impact Area in the annual report: Increasing Life Opportunities, Homelessness, Housing and Disadvantage, Community Health and Wellbeing, and Sustainable Melbourne. Total grants approved during the year were \$9.649m (2014: \$9.002m), a \$647k / 7% increase. The increase in grants was spread across all the Foundation's impact areas. The Foundation has contingent granting liabilities for future financial periods of \$2.046m.

### EQUITY

The LMCF Consolidated Groups total equity of \$225.838m has increased by \$10.818m from last year (2014: \$215.020m). The increase is attributed to realised capital gains, bequests and contributions to charitable fund accounts. Total equity includes \$3.722m in income reserves to enable the Foundation to plan for strategic grants and respond to disaster relief in times of emergency.

The Foundation's total equity comprises three charitable funds: Board of Management of the Lord Mayor's Charitable Fund; Lord Mayor's Charitable Fund; and The Eldon and Anne Foote Trust.

#### Darren McConnell

Chief Financial Officer

### PROFESSIONAL ADVISORS

#### External Auditors:

Deloitte Touche Tohmatsu

#### Internal Auditors:

Grant Thornton

#### Accounting:

RSM Bird Cameron

#### Banks:

Westpac Banking Corporation

#### Investment Advisors:

Mr Tim James (UBS)

Ms Amy Lawrance (UBS)

Mr David Liddle (JB Were)

Mr Graham Craig (Wilson HTM)

#### Strategic Investment Allocation Advisors:

Frontier Advisors

#### Fixed Interest Broker:

Tony Scott (Secure Investments FIB Pty Ltd)

#### Legal:

Gadens Lawyers (includes Pro Bono support)

Justitia Lawyers

### LORD MAYOR'S CHARITABLE FOUNDATION CONSOLIDATED GROUP

## ANNUAL AUDITED FINANCIAL REPORT MEMBERS OF THE BOARD REPORT

30 JUNE 2015

The members of the Board of Management of the Lord Mayor's Charitable Fund (the "Board") present their report, together with the financial statements, on the Lord Mayor's Charitable Foundation Consolidated Group (the "LMCF Consolidated Group") for the financial year ended 30 June 2015.

The Lord Mayor's Charitable Foundation Consolidated Group financial report represents the combined annual financial results of the following individual entities:

- Board of Management of the Lord Mayor's Charitable Fund – ABN 48 042 414 556
- Lord Mayor's Charitable Fund (the Foundation) – ABN 63 635 798 473
- The Eldon and Anne Foote Trust – ABN 38 330 915 392

The Board, a charitable institution, acts as trustee of the Lord Mayor's Charitable Fund (a public ancillary fund) and The Eldon and Anne Foote Trust (Charitable Trust) and holds charitable funds. The LMCF Consolidated Group financial report is a "special purpose financial report" which combines the annual audited financial reports of the above named entities. The LMCF Consolidated Group Financial Report does not form a separate economic entity for accounting purposes.

### MEMBERS OF THE BOARD

The following persons were members of the individual entities within the LMCF Consolidated Group during the whole of the financial year and up to the date of this report, unless otherwise stated:

Rt Hon the Lord Mayor Robert Doyle (President)  
Mr Daniel Leighton (Chairman)  
Mr Andrew Baxter  
Ms Jay Bonnington  
Mr Anthony Connon  
Mr Jon Edwards  
Ms Amanda Milledge  
Mr Peter Snaddon  
Dr George Tippet AM KSJ FAMA (retired Oct 2014)  
Ms Andrea Waters  
Mr Mike Zafiroopoulos AM, JP (retired Oct 2014)  
Mr John Anderson (appointed Oct 2014)  
Mr Richard Balderstone (appointed Oct 2014)  
Mr Craig Bell (appointed Oct 2014)  
Dr Sandra Hacker AO (appointed Oct 2014)  
Ms Jane Peck (appointed Oct 2014)  
Ms Alla Kolganova (appointed Oct 2014)

### PRINCIPAL ACTIVITIES AND ANY SIGNIFICANT CHANGES TO THOSE ACTIVITIES DURING THE YEAR

The LMCF Consolidated Group is combined of three not-for-profit entities being the Board of Management of the Lord Mayor's Charitable Fund, The Lord Mayor's Charitable Foundation and The Eldon and Anne Foote Trust. The principal activities of the individual entities which make up the LMCF Consolidated Group comprise:

- providing grants to charitable organisations to increase life opportunities and improve social inclusion including in the areas of homelessness, housing and disadvantage; increasing life opportunities for younger and older people; health and wellbeing; environment including Sustainable Melbourne;
- providing opportunities and support for individuals and families to participate in philanthropy through donations, sponsorship, charitable fund accounts and bequests;
- researching and stimulating awareness of relevant community needs and of philanthropy; and
- the Board of Management of the Lord Mayor's Charitable Fund acts as a trustee of charitable funds.

The LMCF Consolidated Group includes over 200 Charitable Fund and Bequest Accounts within a Public Ancillary Fund. Investment income attributed to charitable fund balances is made available for charitable distribution after taking into consideration the requirements of the Federal Treasury Public Ancillary Fund Guidelines (2011), capital preservation requirements and stipulated management fees.

There were no significant changes to the principal activities during the year.



## REVIEW OF OPERATIONS AND RESULTS

Total consolidated income from operations was \$24,071,915 (2014: \$63,582,051). The decrease in comparison to the prior year is due to a material reduction in corpus bequest income following an exceptional bequest from the Estate of Mr Eldon Foote. In addition, there was a significant amount of unrealised gain on other financial assets in the prior year, contrary to unrealised loss in the current year. Corpus bequest income funds are transferred to capital corpus reserves. After transfers to capital reserves and the payment of expenses there was a distributable income surplus of \$10,688,431 (2014: \$8,773,115), a 22% increase on the prior year. The current year income surplus together with accumulated income funds was applied to charitable fund distributions of \$9,648,658 (2014: \$9,001,899), a 7% increase in comparison to the prior year.

## SIGNIFICANT CHANGES TO THE STATE OF AFFAIRS

There were no significant changes to the state of affairs of the entities within the LMCF Consolidated Group during the course of the financial year.

## SUBSEQUENT EVENTS

Since the end of the financial year, there were no subsequent events affecting the operations, results of operations or the state of affairs of the individual entities within the LMCF Consolidated Group.

## LIKELY DEVELOPMENTS

There are no likely developments to impact the financial results of the entities within the LMCF Consolidated Group during the financial year ending 30 June 2016.

## ENVIRONMENTAL REGULATIONS

The entities within the LMCF Consolidated Group are not subject to any significant environmental laws or regulations.

## INDEMNIFICATION OF MEMBERS OF THE BOARD

Directors and Officers insurance is held by all entities within the LMCF Consolidated Group.

## BOARD MEETINGS

The following table sets out the number of Board meetings (including meetings of the Executive Committee) during the financial year and the number of meetings attended by each member. During the financial year ended 30 June 2015, there were: seven Board meetings, four Executive Committee meetings, three Governance and Nominations Committee meetings, four Audit and Risk Committee meetings, eleven Investment Committee meetings, two Social Needs Committee meetings and two Strategic Marketing Committee meetings. The Lord Mayor is President of the Foundation and receives Board papers and attends meetings and functions as his schedule and other duties permit.

	BOARD MEETING		EXECUTIVE COMMITTEE**		GOVERNANCE & NOMINATIONS COMMITTEE		AUDIT & RISK COMMITTEE		SOCIAL NEEDS COMMITTEE***		STRATEGIC MARKETING COMMITTEE		INVESTMENT COMMITTEE	
	Eligible to attend	Attended	Eligible to attend	Attended	Eligible to attend	Attended	Eligible to attend	Attended	Eligible to attend	Attended	Eligible to attend	Attended	Eligible to attend	Attended
<b>Mr Daniel Leighton (Chairman)</b>	7	6	4	4	1	1	-	-	2	2	1	1	6	6
<b>Mr Andrew Baxter</b>	7	6	4	3	-	-	2	2	2	1	3	3	-	-
<b>Ms Jay Bonnington</b>	7	4	1	1	2	2	2	2	-	-	-	-	11	6*
<b>Mr Anthony Connon</b>	7	7	3	2	-	-	-	-	-	-	-	-	11	11
<b>Mr Jon Edwards</b>	7	7	3	2	1	1	2	1	2	2	-	-	-	-
<b>Ms Amanda Milledge</b>	7	6	4	3	1	1	2	2	2	2	-	-	-	-
<b>Mr Peter Snaddon</b>	7	3	3	3	3	1	-	-	-	-	-	-	6	3
<b>Dr George Tippet AM KSJ FAMA</b>	1	1	-	-	-	-	-	-	1	1	-	-	-	-
<b>Ms Andrea Waters</b>	7	6*	3	3	3	3	4	4	-	-	-	-	-	-
<b>Mr Mike Zafiropoulos AM, JP</b>	2	1	2	1	-	-	-	-	2	-	-	-	-	-
<b>Mr John Anderson</b>	5	5	4	4	-	-	-	-	-	-	1	1	-	-
<b>Mr Richard Balderstone</b>	5	4	4	3	-	-	-	-	-	-	-	-	5	4*
<b>Mr Craig Bell</b>	5	5	4	4	-	-	2	2	-	-	-	-	-	-
<b>Dr Sandra Hacker AO</b>	5	5	4	4	2	1*	-	-	-	-	-	-	-	-
<b>Ms Jane Peck</b>	5	5	4	4	-	-	-	-	-	-	1	1	-	-
<b>Ms Alla Kolganova</b>	5	4	4	3	-	-	-	-	-	-	-	-	5	1

\*Note: provided comments for meeting \*\*Held within Board Meeting from February 2015 \*\*\*Ceased December 2014

### GOVERNANCE PROCEDURES

The Governance procedures of the Board include the following elements:

- The Board meetings are held at least every three months (section 15(1) of the LMCF Act 1996) and the Board met seven times during the financial year.
- The Executive Committee is established under section 18(1) of the Act. The Executive Committee met seven times, including four times within Board meetings.
- The Board has established the following Committees to assist in the good governance of the Board: Audit and Risk Committee, Strategic Marketing Committee, Investment Committee, Grants Advisory Panels and the Governance and Nominations Committee.
- The Social Needs Committee met twice and ceased operating after the Annual Meeting. Committee Charters are reviewed annually; the Social Needs Committee ceased in November 2014 and the Board introduced four strategic discussions at specific Board meetings around the Foundation's grant making Impact Areas. The Grants Advisory Panels continued to provide advice on the responsive grant making program.
- The Board reviewed its Code of Conduct policy.
- The Investment Committee engages external strategic asset allocation advisors who present on a quarterly basis. The Investment Committee adopts a medium term and long term strategic asset allocation within its Investment Policy. The strategic asset allocation and Investment Policy were formally reviewed during the year.
- The Board undertook an annual performance review facilitated by an external adviser;
- The Board Induction Kit was reviewed and refreshed for the appointment of six new Board Members in October 2014.
- A Risk Appetite policy was adopted;
- The Risk Register and the Legal and Compliance Register were reviewed twice by the Audit and Risk Committee and then the Board.
- An internal audit program is in place and two reviews have been undertaken during the financial year;
- An annual report including summary audited financial statements and an activity report is produced, presented at the Annual Meeting and made available to the public.

RI Hon the Lord Mayor Robert Doyle  
President of the Board



Date 21 September 2015

Daniel Lalghon  
Chairman of the Board



Date 21 September 2015

**LORD MAYOR'S CHARITABLE FOUNDATION  
CONSOLIDATED GROUP**

**STATEMENT OF PROFIT OR LOSS AND OTHER  
COMPREHENSIVE INCOME**

**FOR THE FINANCIAL YEAR ENDED 30 JUNE 2015**

	2015 \$	2014 \$
<b>INCOME FROM CONTINUING OPERATIONS</b>		
General revenue	1,991,049	4,809,547
Corpus revenue	25,744,041	45,324,054
Unrealised gain/(losses) on other financial assets	(3,663,175)	13,448,450
<b>Total income from continuing operations</b>	<b>24,071,915</b>	<b>63,582,051</b>
<b>EXPENSES FROM CONTINUING OPERATIONS</b>		
Employee benefits	(2,027,084)	(2,026,803)
Fundraising and promotional expenses	(213,789)	(252,652)
Depreciation and amortisation	(87,546)	(51,894)
Other operating expenses	(1,276,958)	(1,116,058)
<b>Total expenses from continuing operations</b>	<b>(3,605,377)</b>	<b>(3,447,407)</b>
<b>SURPLUS FOR THE FINANCIAL YEAR BEFORE GRANTS APPROVED</b>	<b>20,466,538</b>	<b>60,134,644</b>
<b>GRANTS</b>		
Grants approved	(9,648,658)	(9,001,899)
<b>SURPLUS AFTER GRANTS APPROVED</b>	<b>10,817,880</b>	<b>51,132,745</b>
<b>OTHER COMPREHENSIVE INCOME</b>	-	-
<b>TOTAL COMPREHENSIVE INCOME FOR THE FINANCIAL YEAR</b>	<b>10,817,880</b>	<b>51,132,745</b>

**LORD MAYOR'S CHARITABLE FOUNDATION  
CONSOLIDATED GROUP**

**STATEMENT OF FINANCIAL POSITION**

**AS AT 30 JUNE 2015**

	2015 \$	2014 \$
<b>ASSETS</b>		
Cash and cash equivalents	2,358,057	6,370,027
Receivables	8,641,944	3,324,120
Other financial assets	224,032,604	209,629,398
Property and equipment	247,298	111,500
<b>Total assets</b>	<b>235,279,903</b>	<b>219,435,045</b>
<b>LIABILITIES</b>		
Payables	4,757,985	869,288
Grants authorised for distribution	4,512,296	3,381,592
Employee benefits	172,094	164,517
<b>Total liabilities</b>	<b>9,442,375</b>	<b>4,415,397</b>
<b>NET ASSETS</b>	<b>225,837,528</b>	<b>215,019,648</b>
<b>EQUITY</b>		
Corpus and general bequest funds	222,115,360	212,337,253
Funds to be distributed	3,722,168	2,682,395
<b>TOTAL EQUITY</b>	<b>225,837,528</b>	<b>215,019,648</b>



**LORD MAYOR'S CHARITABLE FOUNDATION  
CONSOLIDATED GROUP**

**DECLARATION BY MEMBERS OF THE BOARD**

**FOR THE FINANCIAL YEAR ENDED 30 JUNE 2015**

In the opinion of the members of the Board the statement of profit or loss and other comprehensive income, statement of financial position, statement of changes in equity, statement of cash flows and notes to and forming part of the financial statements, presents fairly the results of the LMCF Consolidated Group's operations for the year ended 30 June 2015 and its state of affairs as at that date, in accordance with a resolution of the Board.

At the date of signing this financial report, we are not aware of any circumstance that would render any particulars included in the financial report to be misleading or inaccurate. There are reasonable grounds to believe that the LMCF Consolidated Group will be able to pay its debts as and when they became due and payable.

This declaration is made in accordance with a resolution of the members of the Board of Management of the Lord Mayor's Charitable Fund.



Rt Hon the Lord Mayor Robert Doyle  
President of the Board

Date 21 September 2015  
Melbourne



Daniel Leighton  
Chairman of the Board

Date 21 September 2015  
Melbourne

## AUDITOR'S REPORT



Deloitte Touche Tohmatsu  
ABN 74 480 124 580  
1300 486 000  
Melbourne VIC 3000  
GPO Box 78  
Melbourne VIC 3001 Australia  
Tel: +61 3 8611 7000  
Fax: +61 3 8611 7045  
www.deloitte.com/au

## Independent Auditor's Report to the Members of the Board of Lord Mayor's Charitable Fund Consolidated Group

We have audited the accompanying financial report, being a special purpose financial report, of Lord Mayor's Charitable Fund Consolidated Group, which comprises the statement of financial position as at 30 June 2015, the statement of profit and loss and other comprehensive income, the statement of cash flows and the statement of changes in equity for the year then ended, notes comprising a summary of significant accounting policies and other explanatory information, and the declaration by Members of the Board as set out on pages 6 to 27.

### Management's Responsibility for the Financial Report

Management is responsible for the preparation and the presentation of the financial report and have determined that the basis of preparation described in Note 1, is appropriate to meet the financial reporting requirements of the Lord Mayor's Charitable Fund Act 1996 and is appropriate to meet the needs of the members of the Board. Management's responsibility also includes such internal control as management determine is necessary to enable the preparation and the presentation of the financial report that is free from material misstatement, whether due to fraud or error.

### Auditor's Responsibility

Our responsibility is to express an opinion on the financial report based on our audit. We conducted our audit in accordance with Australian Auditing Standards. Those standards require that we comply with relevant ethical requirements relating to audit engagements and plan and perform the audit to obtain reasonable assurance whether the financial report is free from material misstatement.

An audit involves performing procedures to obtain audit evidence about the amounts and disclosures in the financial report. The procedures selected depend on the auditor's judgement, including the assessment of the risks of material misstatement of the financial report, whether due to fraud or error. In making these risk assessments, the auditor considers internal control relevant to the entity's preparation and the presentation of the financial report in order to design audit procedures that are appropriate in the circumstances, but not for the purpose of expressing an opinion on the effectiveness of the entity's internal control. An audit also includes: (a) evaluating the appropriateness of accounting policies used and the reasonableness of accounting estimates made by management, as well as evaluating the overall presentation of the financial report.

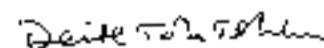
We believe that the audit evidence we have obtained is sufficient and appropriate to provide a basis for our audit opinion.

### Opinion

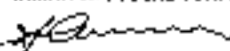
In our opinion, the financial report presents fairly, in all material respects, the financial position of Lord Mayor's Charitable Fund Consolidated Group as at 30 June 2015 and its financial performance for the year then ended in accordance with the financial reporting requirements of the Lord Mayor's Charitable Fund Act 1996 as described in Note 1.

### Basis of Accounting and Restriction on Distribution and Use

Without modifying our opinion, we draw attention to Note 1 to the financial report, which describes the basis of accounting. The financial report has been prepared to assist Lord Mayor's Charitable Fund Consolidated Group to meet the financial reporting requirements of the Lord Mayor's Charitable Fund Act 1996. As a result, the financial report may not be suitable for another purpose. Our report is intended solely for the Members of the Board and should not be distributed to or used by parties other than the Members of the Board.



DELOITTE TOUCHE TOHMATSU



Peter A. Caldwell  
Partner  
Chartered Accountants  
Melbourne, 21 September 2015

## BOARD OF MANAGEMENT

AS AT 30 JUNE 2015



**The Rt Hon. the Lord Mayor of Melbourne Robert Doyle**  
**President:** December 2008  
**Appointed:** 2008

Robert Doyle was elected Lord Mayor in 2008. He is a Principal at The Nous Group, a management consultancy business based in Melbourne and since 2007 has been Chairman of Melbourne Health (The Royal Melbourne Hospital). In 2010, he was made a Fellow of Monash University. Robert is also Chairman of Royal Melbourne Hospital Foundation and a Trustee of the Shrine of Remembrance.



**Mr Daniel Leighton, BAppSci(Hons)**  
**Chairman:** December 2013  
**Appointed:** 2008  
**Committees:** Governance and Nominations, Strategic Marketing  
**Grants Advisory Panel:** Sustainable Melbourne  
**Youth in Philanthropy:** Mentor

Daniel is the CEO of Inclusion Melbourne, a progressive disability support provider which promotes the inclusion of people with intellectual disability. He currently serves on the Victorian committee of National Disability Services, the peak industry body and previously served as an advisor on the design of the National Disability Insurance Scheme. He has previously held a range of operational, policy and research roles in government and the not-for-profit sector.



**Ms Jay Bonnington, BCom, MBA, FCPA, FAICD**  
**Deputy Chair:** October 2014  
**Appointed:** 2008  
**Committees:** Governance and Nominations, Investment

Jay is a qualified chartered accountant who held senior financial roles both internationally and in Australia, including CFO/ Finance Director roles, and National CEO of Make-A-Wish Foundation of Australia. She has been a professional full-time director since 2005 on a portfolio of boards. Currently an independent director on the UTA Infrastructure Board, Australian Rail Track Corporation, Metro Fire Brigade and a Member of Deakin University Council.

Jay is a Trustee of The Queens Fund, and an Independent Member of Mercy Health and Aged Care Audit Finance and Risk Committee. She also serves on the Advisory Board of The Salvation Army (Southern Territory), and is Independent Chair of the Audit Committee.



**Mr John Anderson**  
**Appointed:** 2014  
**Committee:** Strategic Marketing  
**Grants Advisory Panel:** Sustainable Melbourne (Chair)

John has extensive experience in Landcare, land and water resource management, primary industry, business planning, and financial management. His previous directorships have been with the Victorian Railtrack Authority (Victrack) as Deputy Chair, West Gippsland Healthcare Group and South Gippsland Water. He owns and operates a beef farm in the Bunyip area and is also a director of the following organisations: LaTrobe Regional Hospital, West Gippsland Catchment Management Authority, Ministerial Advisory Council for Earth Resources, Victorian Healthcare Association, Gippsland League and Living Learning – Pakenham.



**Mr Andrew Baxter, BBus(Mktg), AMAMI, GAICD**  
**Appointed:** 2011  
**Committees:** Strategic Marketing (Chair),  
**Grants Advisory Panel:** Increasing Life Opportunities (Co-Chair)

Andrew is the CEO of Publicis Worldwide Australia, one of the biggest communications agencies in the country. Andrew is a Director of a number of companies within Publicis Australia. Andrew is also the Chairman of The Song Room, and sits on the Board of the Communications Council.

## FINANCE AND GOVERNANCE



**Mr Richard Balderstone**

**Appointed:** 2014

**Committee:** Investment

Richard has worked in the financial and investment markets for 35 years. He was a founding partner and director of JCP Investment Partners, a specialist investment management organisation with over \$10 billion in funds under management.

Previously, Richard was a Director of ABN AMRO (and BZW) for over 10 years. He was a Director of the Australian Rail Track Corporation and a Trustee Director of the Commonwealth Public Service Superannuation Schemes (CSS/PSS) between 1998 and 2004. Richard is a Trustee/Director of several charitable organisations including Baker Foundation, Olivia Newton-John Cancer Research Institute and SecondBite Future Trust.



**Dr Sandra Hacker AO**

**Appointed:** 2014

**Committee:** Governance and Nominations  
**Grants Advisory Panel:** Community Health and Wellbeing (Chair)

Sandra is a psychiatrist in private practice, who also works at the Alfred Hospital heart-Lung Transplant Unit. She is a Fellow of the Australian Institute of Company Directors. Sandra Chairs the Human Research Ethics Committee for the Victorian Departments of health and Human Services. Sandra was appointed an Officer of the Order of Australia (AO) in 2005 and received a Doctor of Medical Science (honoris causa) from the University of Melbourne in 2012.



**Mr Craig Bell**

**Appointed:** 2014

**Committee:** Audit & Risk (Chair)

Craig is a Certified Practising Accountant, Member of the Australian Institute of Company Directors and is currently Chief Financial Officer at the Victorian Employers' Chamber of Commerce and Industry (VECCI). Craig has over 20 years' experience in Finance and ICT, having held senior positions across a number of sectors. This includes roles in top-tier investment firms both in London and Melbourne at Lloyds Bank TSB, Salomon Smith Barney, J.P. Morgan and Legg Mason, telecommunications in Brussels and various financial positions both in the Victoria and South Australian State Governments.



**Mr Jon Edwards**

**Appointed:** 2008

**Committee:** Audit and Risk  
**Grants Advisory Panel:** Homelessness, Housing and Disadvantage (Chair)  
**Youth in Philanthropy:** Mentor

Jon was formerly CEO of Frankston City Council, and State and National President of Local Government Managers Australia, a peak professional association which awarded him its Certificate of Merit for Services to Local Government. Jon is a Life Governor of the Peter James Centre.



**Mr Anthony Connon, BA (Oxon),  
FCA, FAICD**

**Appointed:** 2006

**Committee:** Investment (Chair)

Anthony joined Australian Unity in 1995 as Chief Financial Officer, and was appointed Strategic Adviser to the Group Managing Director in 2014. Anthony has more than 30 years' experience in senior finance and administrative roles with various major financial organisations. Anthony is the honorary treasurer of Friendly Societies Australia Inc, a board member of Menzies Foundation, and is a former Chairman of Lord Mayor's Charitable Foundation.



**Ms Alla Kolganova, PhD, CFA**

**Appointed:** 2014

**Committee:** Investment

Alla is Head of Equity Index Portfolio Management and Trading in Europe and is responsible for the management of the European equity team. Alla was appointed to the role of Head of Equities in 2007 and remained in this role until she moved to London to take up her current role in early 2015. Prior to joining the investment industry, Alla taught mathematics at La Trobe, RMIT and Melbourne universities.

Alla holds a Master of Science (Cybernetics) from Moscow State University and a PhD (Mathematics) from La Trobe University. She is a CFA Charterholder and a Graduate of the Australian Institute of Company Directors (GAICD).



## FINANCE AND GOVERNANCE



**Ms Amanda Milledge GAICD**

**Appointed:** 2011

**Committee:** Audit and Risk

**Grants Advisory Panel:**

Increasing Life Opportunities (Co-Chair)

Amanda has a background as a commercial lawyer and Pro Bono and Community Program Co-ordinator at Mallesons Stephen Jaques. Now working in the not-for-profit sector, Amanda is a trustee of the Collier Charitable Fund. She is also an accredited broker under the Partnership Brokers' Accreditation Scheme.



**Ms K. Jane Peck BA, GAICD**

**Appointed:** 2014

**Committees:** Strategic Marketing, Governance and Nominations

Jane is on the Council of University College, a former president of the Lyceum Club Melbourne and Non-Executive Director of MS Victoria. Jane has broad executive experience across a number of sectors and business models, ranging from marketing to manufacturing with her particular strengths in consumer insights and stakeholder engagement.



**Mr Peter Snaddon, LLB**

**Appointed:** 2008

**Committee:** Governance and Nominations

Peter is a Special Counsel and former Senior Partner at Gadens Lawyers Melbourne. He has extensive experience in the acquisition, development, construction, financing and leasing of major property projects. He has taken the lead role in many landmark developments in Melbourne, including Collins Place, Melbourne Magistrates' Court and Telstra Dome.



**Ms Andrea Waters, FCA, GAICD, GAIST**

**Appointed:** 2008

**Committees:** Governance and Nominations (Chair), Audit and Risk

Andrea is a professional Non-Executive Director and Chartered Accountant. She was previously an Audit Partner with KPMG specialising in financial services and has more than 28 years experience auditing companies and not-for-profit organisations. She is also a Director of Chartered Accountants Australia New Zealand, CareSuper and Citywide Service Solutions and has previously been a board member of Cancer Council Victoria.

---

## RETIRED OCTOBER 2014



**Dr George Tippet AM KSJ FAMA**

**Appointed:** 2003

**Retired:** October 2014

George has undertaken many international humanitarian projects that combine primary care with school education programs involving parents. He is on the councils of Australian Medical Association, Medical Benevolent Association and Victorian Doctors' Health Program.



**Mr Mike Zafiropoulos AM, JP  
BAppSci, DipCompSci, Cert. TV  
Production**

**Appointed:** 2003

**Retired:** October 2014

**Youth in Philanthropy:** Mentor

Mike's commitment to community service spans more than 40 years. A former Mayor of Fitzroy, he was Director of the Department of Immigration and General Manager of SBS in Melbourne. His past membership of boards includes Royal Victorian Eye and Ear Hospital, Regional Arts Victoria and Melbourne Community Foundation. He is a Life Australia Day Ambassador and currently serves as Chairman of Channel 31 and Fronditha Care. Mike chaired the Foundation's Ageing Grants Advisory Panel until October 2014.

## STAFF

AS AT 30 JUNE 2015



**Catherine Brown**  
LLB, BA, GradDip BusAdmin, FAICD  
Chief Executive Officer

Catherine is a lawyer with a commitment to community philanthropy. After several years in commercial law, she worked in legal, management and consulting roles within the not-for-profit and philanthropic sectors before she joined the Foundation in 2011. Catherine is the author of *Great Foundations: a 360° guide to building resilient and effective not-for-profit organisations* (ACER Press, 2010). She has commenced a PhD by practice related research related to philanthropic foundations and innovation at Swinburne University. Catherine has held Board member or Board Chair roles in a range of sectors including health, women's affairs, cemetery management and education.



### Communications and Community Engagement

(Left to right) Rachel Richmond, Community Engagement Officer; Stephanie Fichera, Communications Officer; Suzanne Doig, Senior Manager Communications and Community Engagement.



### Grants and Initiatives

(Left to right) Anita Hopkins, Senior Manager Grants Program and Community Initiatives; Alba Granados, Grants Program Manager; Myla Villanueva, Grants Administrator; Kerry Jones, Grants Program Manager; Alick Weber, Grants Program Manager.



### Finance and Governance

(Left to right) Caroline Vella, Finance Co-ordinator; Jaishma Krishna, Accountant; Charlene Cashin, Office Co-ordinator; Cameron Winnett, Legal Officer; Tharumini Navaratnam, Accountant; Darren McConnell, Chief Financial Officer.



### Philanthropic Services

(Left to right) Judy Buchan, Senior Manager Philanthropy; Kim Sullivan, Youth in Philanthropy Program Manager and Lonia Catalano, Philanthropic Services Officer.

Staff not in photos: Rebecca Case and Noela Foote.

### YOUTH IN PHILANTHROPY MENTORS 2014

**Petrina Dorrington**

Australian International Academy

**Darren McConnell**

Brighton Grammar School

**Shane Austin**

Broadford Secondary College

**Judy Buchan**

Camberwell Grammar School

**Alick Weber**

Carrum Downs Secondary College

**Kerryn Jones**

Hume Central Secondary College

**Catherine Brown**

Ivanhoe Grammar School

**Allan Kaufman**

King David School

**Jackie King**

Lauriston Girls School

**Elizabeth Logan**

MacRobertson Girls High School

**Anita Hopkins**

Melbourne Girls College

**Wendy Lewis**

Melbourne Grammar School

**Jon-Michail**

Melbourne High School

**Mike Zafiropoulos AM, JP**

Methodist Ladies College

**Daniel Leighton**

Mt Scopus Memorial College

**Mike Bowen**

Parade College

**Stephanie Orr**

Ringwood Secondary College

**Roger Leeming**

St Michael's Grammar School

**Tony Scott**

Trinity Grammar School

**Jon Edwards**

University High School

**Suzanne Doig**

Werribee Secondary College

### GRANTS ADVISORY PANELS 2014/2015

**Community Health and Wellbeing**

Dr Sandra Hacker AO – Chair

Dr Michelle Blanchard

Rhyl Gould

Lynne Wenig

Irene Verins

Mike Zafiropoulos AM, JP (2014)

**Housing, Homelessness and Disadvantage**

Jon Edwards – Chair

Professor Simon Biggs

Associate Professor Susan Feldman

Associate Professor David MacKenzie

Patrice Scales (2014)

Sarah Toohey

**Increasing Life Opportunities**

Andrew Baxter – Co-Chair

Amanda Milledge – Co-Chair

Dr Michelle Anderson

Georgie Ferrari

Sue Hendy

Emma Hinds (2014)

Carmel Morfuni

Dr Sue Nattress AO

Chris Thompson

**Sustainable Melbourne**

John Anderson – Chair

Dr Bronwyn Burton

Trevor Huggard AM

Dr Robyn Leeson

Daniel Leighton (2014)

Cr Cathy Oke (2014)

Professor Allan Rodger

**Feed Melbourne**

Anita Hopkins

Kerryn Jones

Nick Miller (Leader Community Newspapers)

Sandra Dudakov (FareShare)

Patrick Coville (Foodbank)

### MARKETING ADVISORS

**Allan Kaufman**

Leba Ethnic Media

**David Mann OAM**

3AW

**Robert Masters**

Robert Masters and Associates

**Michelle Stamper**

Nine Network



**INSPIRING  
PHILANTHROPY  
SINCE 1923**

#### **AUDITORS**

External Auditors:  
Deloitte Touche Tohmatsu

Internal Auditors (as at 30 June 2015):  
Grant Thornton

#### **LEGAL**

Gadens Lawyers  
Justitia Lawyers

#### **LORD MAYOR'S CHARITABLE FOUNDATION**

*Lord Mayor's Charitable Fund Act 1996 (Victoria).*

Level 15, 1 Collins Street, Melbourne 3000  
GPO Box 1851 Melbourne 3001  
(03) 9633 0033  
info@lmcf.org.au

Lord Mayor's Charitable Fund ABN 63 635 798 473  
Board of Management of Lord Mayor's Charitable Fund ABN 48 042 414 556  
Eldon & Anne Foote Trust ABN 38 330 915 392

**LMCF.ORG.AU**