



**ANNUAL REPORT 2013**  
**90TH ANNIVERSARY EDITION**

**WE ENGAGE WITH OUR  
DONORS, PARTNERS AND  
COMMUNITY TO LEAD  
POSITIVE CHANGE THROUGH  
EFFECTIVE, INNOVATIVE AND  
INSPIRED PHILANTHROPY.**







### FLOWER DAY 1925-2013

The gesture of giving flowers was beautifully captured in Melbourne when Lord Mayor Sir William Brunton launched Flower Day in May 1925 for the Lord Mayor's Fund for Metropolitan Hospitals and Charities.

Sir William sought the support of the Flower Growers' Association to assist with the fundraising appeal by providing flowers for the event. A special feature of Flower Day was the wonderful support from volunteers selling flowers and flower pins on the streets of Melbourne.

Thousands of pounds were raised for Melbourne's hospitals and charities and Flower Day became an annual event until 1976.

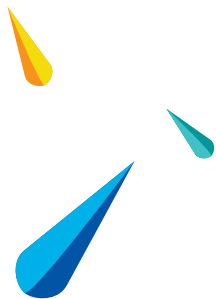
As part of our special 90th anniversary celebrations, the Lord Mayor's Charitable Foundation relaunched Flower Day with support from Flowers Victoria and the Lady Mayoress' Committee. Funds raised from Flower Day is provided to charitable organisations as grants supporting women and girls.

Photo: With thanks to Ms Noela Foote.





INSPIRING PHILANTHROPY SINCE 1923



# INSPIRING PHILANTHROPY

## CONTENTS

1	HIGHLIGHTS 2012/2013
2	OUR HISTORY
3	PRESIDENT'S MESSAGE
4	CHAIRMAN'S REPORT
6	CHIEF EXECUTIVE OFFICER'S REPORT
8	CELEBRATING 90 YEARS OF INSPIRING PHILANTHROPY
10	UNDERSTANDING OUR COMMUNITY
12	OUR GRANTS PROGRAM
13	OUR RESEARCH
14	OUR IMPACT IN THE COMMUNITY
16	AGEING INITIATIVE
18	HOMELESSNESS AND AFFORDABLE HOUSING INITIATIVE
20	YOUTH INITIATIVE
24	FOOD SECURITY INITIATIVE
26	ARTS AND HERITAGE
27	COMMUNITY AND PREVENTATIVE HEALTH
28	ENVIRONMENT
29	INSPIRING PHILANTHROPY
30	INSPIRING PHILANTHROPY
32	ELDON AND ANNE FOOTE DONOR ADVISED FUND
33	A GENEROUS LEGACY – GIFTS IN WILLS
34	WOMEN IN PHILANTHROPY – MAKING A DIFFERENCE TOGETHER
36	ENGAGING IN PHILANTHROPY
37	CHARITABLE FUND ACCOUNTS
39	COMMUNITY CHARITABLE FUND ACCOUNTS
40	PROACTIVE GRANTS TO INSPIRE PHILANTHROPY
41	FUNDRAISING APPEALS
42	BEING ACCOUNTABLE
44	FINANCE REPORT
45	MEMBERS OF THE BOARD REPORT
48	STATEMENT OF PROFIT OR LOSS AND OTHER COMPREHENSIVE INCOME
49	STATEMENT OF FINANCIAL POSITION
50	DECLARATION BY MEMBERS OF THE BOARD
51	BOARD OF MANAGEMENT PROFILES 2013
53	STAFF
54	OUR PARTNERS IN PHILANTHROPY

At the Lord Mayor's Charitable Foundation, we inspire philanthropy by bringing people, ideas and funding together to achieve positive social change within the community. The Foundation aims to increase life opportunities and promote social inclusion through philanthropic services, partnerships and the distribution of grants to charitable agencies.

Our program areas include Homelessness, Youth, Ageing, Environment, Community and Preventative Health, and Arts and Heritage. Strategic Initiatives include the Youth Initiative which includes Youth in Philanthropy; Affordable Housing; Food Security which includes Feed Melbourne; and Ageing in a Multicultural Community. We use a combination of grants, research, partnerships, communications and investment tools to grow and build strong communities, and measure our impact.

We provide grants to a range of charities including smaller local charities working at the frontline providing health, accommodation and food services to people in need; to charitable organisations working towards long term social change.

We provide philanthropic services for our donors including charitable fund accounts, gifts in Wills, donor conversations and collective giving.

As a community foundation, our aim is to promote the wellbeing of people and strengthen the community through the funding of projects that support social inclusion and increase life opportunities.

Throughout this very special anniversary year, we have learnt that since our establishment in 1923, the Lord Mayor's Charitable Foundation has always been at the heart of Australian philanthropy, often leading the way, and making brave and forward-thinking granting decisions, particularly on homelessness, health and fundraising programs.

As part of our 90th anniversary celebrations, we launched a new brand identity to better represent the multifaceted range of services and work undertaken by us as a community foundation.

We adopted the position of *inspiring philanthropy* as a vision for our work, to encourage philanthropy through innovative grantmaking and access to expert philanthropic services for our community.

Our beautiful new logo features a kaleidoscope of petals which form hearts within a flower. At the centre of the logo is a red heart and strong grey type face to showcase our name, Lord Mayor's Charitable Foundation.

Each heart represents an activity or business unit within the Foundation.



# HIGHLIGHTS 2012/2013



## 90TH ANNIVERSARY

- We celebrated 90 years of community philanthropy by producing a DVD on our past and present; we hosted a Social Investment and High Impact Philanthropy Conversation, and hosted our 90th Anniversary Dinner at the Melbourne Town Hall with past and current Board members, former Lord Mayors and friends.
- We launched our *90th Anniversary In Our Community Grants Program* for schools to work with local charities.



## GRANTS PROGRAM

- The Grants Program has been redesigned to include the following grant types: Direct Aid & Equipment, Survive & Thrive, Capacity Building, Exploration, Major, Proactive and Signature Grants.
- Grants Advisory Panels are now chaired by Board members and include professionals in their areas of expertise.
- More than \$8 million in grants was distributed in the areas of Youth, Ageing, Homelessness, Community and Preventative Health, Arts and Heritage, and the Environment.
- We hosted our second Grantseekers Forum, established a Grant Impact Evaluation Framework with Effective Philanthropy and conducted a Grantseekers Survey with Swinburne University.
- We commenced our Food Security Initiative, building on our granting and work with Feed Melbourne.



## YOUTH IN PHILANTHROPY

- The 2012 Youth in Philanthropy Program welcomed almost 100 students from 16 schools to participate in our annual grants program. The students recommended \$240,000 in grants to our Board of Management. In 2013, 18 schools participated in the program.
- We are increasing our knowledge through a research project with the Centre for Multicultural Youth.



## PHILANTHROPIC SERVICES

- Three fundraising appeals were held throughout the year including Feed Melbourne, Flower Day and our Christmas Appeal.
- We held two Donor Conversations titled *Women and Girls* and *Investing in the Arts for Social Change*.



## WOMEN IN PHILANTHROPY

- We began a partnership with the Australian Women Donors Network to enhance the impact of our work supporting women and girls.



## INITIATIVES AND RESEARCH

- We undertook research in the area of ageing in a multicultural community. We are working with the Italian, Greek and Chinese communities in the first year of our Ageing Initiative.
- We held an Affordable Housing Think Tank which brought together architects, town planners, experts in homelessness services and affordable housing organisations, and property experts to brainstorm and discuss new solutions to homelessness.
- We mapped Melbourne according to our Grants Program areas as part of our Community Indicators Research project. The results were reported to the Grants Advisory Panels.



# OUR HISTORY



Sir John Swanson, Lord Mayor of Melbourne and first President of the Lord Mayor's Charitable Foundation.

## **Melbourne's Lord Mayor Sir John Swanson was a successful businessman and philanthropist.**

In 1923 Sir John led the way for the establishment of the Lord Mayor's Fund for Metropolitan Hospitals and Charities with the vision of organising and co-ordinating charitable giving in Melbourne.

A visionary thinker, Sir John was convinced it was possible to provide the city's hospitals and charities with an assured stream of income. His idea was to centralise fundraising through a scheme based on a community chest.

The Lord Mayor's Fund for Metropolitan Hospitals and Charities was officially opened by Acting Premier Sir William McPherson on 14 June 1923 at the Melbourne Town Hall.

Over the past 90 years, the Lord Mayor's Charitable Foundation has continued to connect donors, and charitable organisations with those in genuine need in our community. Tens of millions of dollars have been fundraised and granted to charities and public hospitals since 1923.

Today we continue to lead Australian community philanthropy and work to engage people to find inspiring solutions to current social and environmental challenges.

Our work includes granting, research, community education, partnerships and engaging philanthropists (charitable fund holders) and donors to achieve positive social change. We also provide support to grassroots charities working in areas of critical concern to the Foundation.

Our current priority initiatives are overcoming homelessness; providing opportunities for all young people, and enhancing the experience of ageing in a multicultural community. We also fund in the Arts, Community and Preventative Health, the Environment and Food Security.

Sir John's vision has inspired generations of giving, and paved the way for Melbourne to be the centre for philanthropy in Australia. The Lord Mayor's Charitable Foundation will always be an important and leading philanthropic force in Melbourne.

Please turn to page 8 to see highlights from our 90th anniversary celebrations.

**"DAY BY DAY I SEE THE GREATER POSSIBILITIES IN THE SCHEME, AND IT IS NOT UNREASONABLE TO FORECAST THROUGH THIS GREAT ORGANISATION, AN INCOME SUFFICIENT FOR THE MAINTENANCE OF OUR CHARITIES."  
- SIR JOHN SWANSON**



# PRESIDENT'S MESSAGE

**Melbourne has a long and proud tradition of philanthropy and the Lord Mayor's Charitable Foundation is an important part of that story. It has evolved into Australia's largest community foundation and this year we celebrated our 90th anniversary with a wonderful program of events.**

The centrepiece of the celebrations was the 90th Anniversary Dinner which saw former Lord Mayors, major grant recipients, donors, and representatives from our philanthropic sector come together to celebrate the Foundation's achievements. It was a memorable evening and a reminder that the Foundation has been built on the hard work and goodwill of many people.

This year also saw the Flower Day Appeal re-launched 40 years after it ended. Flower Day was initiated by Lord Mayor Sir William Brunton shortly after the Foundation was established. I am pleased that the proceeds of the re-invigorated appeal will be used to support women and girls in need.

While our anniversary celebrations helped raise awareness about the Foundation's significant achievements, our core work also continued throughout 2013. We distributed in excess of \$8 million to more than 500 charities assisting those who are homeless, disabled or marginalised in other ways. The Foundation worked with a diverse range of donors and 15 new charitable fund accounts were established.



Lord Mayor Robert Doyle, President.

May I recognise and thank The Eldon and Anne Foote Trust, a major contributor to the Foundation, the late Mr Arthur Martin for his generous bequest and all those involved with the Lady Mayoress' Committee for their fundraising in the city.

2013 has been a memorable year for the Foundation. May I thank the Board, our Chief Executive Officer, Catherine Brown, and her team for their contribution to our success.

Finally, to all our donors – thank you for your support and commitment to our great city of Melbourne.

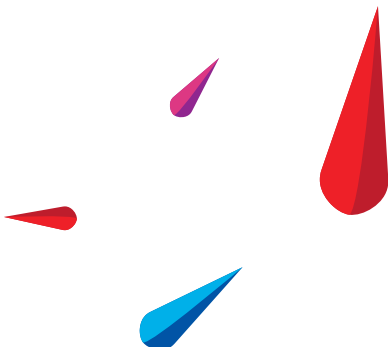
A handwritten signature in black ink that reads "Robert Doyle". The signature is fluid and cursive, with the first name and last name clearly distinguishable.

**Robert Doyle**

Lord Mayor  
President, Lord Mayor's  
Charitable Foundation



Lord Mayor Robert Doyle and Chief Executive Officer Catherine Brown.





# CHAIRMAN'S REPORT



Robert Masters, Chairman.

**"IN MY LAST TERM OF OFFICE AS CHAIRMAN OF THE FOUNDATION, I CONTINUE TO REACH OUT TO OUR COMMUNITY TO ENCOURAGE EVERYONE TO ADOPT A CULTURE OF PHILANTHROPY."**

**This year was a year of celebration of achievements for the Lord Mayor's Charitable Foundation. It marked our 90th anniversary, making us one of the oldest foundations in Victoria; it marked us becoming the largest community foundation in Australia; and it highlighted that thousands of charities had benefitted from our grants over the past nine decades, including more than 500 in the past year.**

These milestones reflect the importance of the Foundation in helping to meet the needs of our community. It also reflects our role in helping those in need. Although we are a nation of givers, the need for help continues to outstrip what can be provided.

Recent figures show that almost 4.8 million Australians made a donation to charity last financial year, giving more than \$2.2 billion. Other figures show that on a global scale we are the most generous nation when it comes to giving money, time and help, with Australians each donating \$291 to charities each year. This recognises that Australians will give to a cause that will bring about a change to the health and wellbeing of their community.

But this giving is not embedded in our culture as it is with other nations. How can we learn from the Americans where the culture of giving at the top income brackets of the community is far greater than ours? We cannot have a culture where the proportion of giving by those who are less well-off outstrips that of those who are wealthier. Instead we must value giving.

This value of giving is one of the biggest challenges we face as a Foundation, but it has been one that has been a guiding light to the way we operate.

How do we turn philanthropy into a 'tap' that could support the causes that are in need?



Robert Masters presented Fiona Reidy, daughters Molly and Keeley, and husband Tony McCaffrey with their charitable fund holder certificate 'Rory McCaffrey Reconciliation Fund' in memory of their son Rory.

The tenet of our Foundation is to bring about change and make a difference in our community. We know that Australians will give to a cause if it is associated with bringing about a positive change.

We have sought to address this challenge through a plurality and diversity of funding sources. We have sought to ensure that both the young and older people in our community recognise that philanthropy is as beneficial to them as a donor as it is to the recipients.

Our Youth in Philanthropy program is an excellent example of this. In 2012 we celebrated the 10th anniversary of the program, which has grown to 18 schools in 2013. The responses by the students highlight that, even on a small scale, the pride they achieve through giving far outweighs most of the other things they have done in their lives.

In my last term of office as Chairman of the Foundation, I continue to reach out to our community to encourage everyone to adopt a culture of philanthropy, one in which those who are better off see themselves with a responsibility to engage in philanthropy. We know that a community in which the wealthier are more generous is one where the relationship between haves and have-nots is transformed from resentment to mutual dependence. It is a stronger society for the welfare of all.

Having said that, I do want to acknowledge all those who have given their time and funds to our Foundation and to say 'thank you'. There are many of you who wish to maintain your privacy, but to all of you, you play a crucial part in helping to foster a wider culture of giving.

I would also like to thank the Board of Management for their support and contribution to the significant workload that a Foundation of our size generates. I also thank the members in various committees and sub-committees of the Board, as well as those who also give their time voluntarily on our Grants Advisory Panels and the Lady Mayoress' Committee.

My final thanks goes to the Foundation's Chief Executive Officer, Catherine Brown and her excellent team who have made an invaluable contribution to enabling the Foundation to achieve its position in the philanthropic sector and in preparing us for our 100th celebrations in the not too distant future.

This work and the support of those who recognise the valuable work of the Foundation in *inspiring philanthropy* all contribute to building a better society.

**Robert Masters, FPRIA**  
Chairman

# CHIEF EXECUTIVE OFFICER'S REPORT



Catherine Brown, Chief Executive Officer.

**This has been an energising year for the Lord Mayor's Charitable Foundation. We looked back at our history, drawing inspiration from the past 90 years of growing philanthropy in Melbourne, and we looked forward during our strategic planning process to see the opportunities that lie ahead.**

Through research and the development of a DVD for our 90th anniversary, it became clear that the Foundation has always been a leader in the community. We came to see that the Foundation can be 90 and still fabulous! The Foundation has tackled some tough and cutting edge challenges. From supporting the free kindergarten movement, to providing funding for HIV AIDS and Anorexia Nervosa before they were well understood conditions, to supporting all the waves of migration, and supporting major disaster relief programs since the 1930s.

The more recent work in homelessness was an extension of this courage and commitment to make a difference. The two Signature Grants made in 2009 were successful in demonstrating new models of service aimed at reducing homelessness and have led to government investment. While reviewing the next steps in this area, an Affordable Housing Think Tank was held to gain feedback from experts in the homelessness, housing, architecture and related sectors. This group advised us to take a lead in demonstrating affordable housing. The Affordable Housing Initiative is taking our work in this area to the next level.

In April 2013, we hosted a special conversation on *Social Investment and High Impact Philanthropy*, where we learned from leaders from the Skoll Foundation about supporting social enterprise and social entrepreneurs and mission related investing. We invited our colleagues from other foundations and social investment organisations to this very inspiring event.

Our new three year Strategic Plan identified other areas apart from Affordable Housing where the Foundation can play a useful leadership role. By giving attention to some important issues through research, proactive granting and working collaboratively, we want to increase the Foundation's impact within the community and add value to our responsive granting program.

Ageing has been a grants program area for some time and the Foundation has developed an understanding of the particular issues facing older people in living well. In March 2013 we launched a major two year grant to the Council on the Ageing to pilot the Age Friendly Communities project. Over time the Foundation has identified that the challenges facing older people from cultural and linguistic backgrounds other than English living in Melbourne is an area where more work could be done. The Ageing in a Multicultural Community Initiative is bringing together expert researchers and community organisations supporting the Greek, Italian and Chinese communities to document strategies that have worked and barriers to social participation and ageing well.

Another area of focus for the Foundation is Youth, particularly enhancing social inclusion and pathways to education and employment. In addition to a very exciting Grants Program – seven youth support organisations were funded in the new Capacity Building Grants Program, and the ever growing Youth in Philanthropy program (where students learn about charities in their community and philanthropic granting) – the Foundation is working with



Chief Executive Officer Catherine Brown was a key speaker at the Council on the Ageing Major Grant launch of 'Age Friendly Communities'.



**"WE ARE PART OF A GLOBAL MOVEMENT OF COMMUNITY FOUNDATIONS, ALL WORKING WITH OUR DONORS AND COMMUNITIES TO ADDRESS THE PRESSING ISSUES OF THE DAY AND HELP BUILD RESILIENT, COHESIVE AND VIBRANT COMMUNITIES FOR THE FUTURE."**

the Centre for Multicultural Youth to identify barriers faced by young newly arrived refugees to education and employment. Developing the community leaders of the future is an important role for a community foundation such as ours. The *90th Anniversary In Our Community Grants Program* is providing an opportunity for school students to partner with local charities to tackle social, educational or environmental projects in their local area.

The Foundation's Grants Program was redesigned to respond to the different types of support that charities required. Following a review of past granting, we recognised that the 'maintenance of charities' was a long term role of the Foundation.

The Survive & Thrive, Capacity Building and Direct Aid & Equipment Grants support smaller charities to do what they do best. At the end of the grant continuum is social change philanthropy, where new ideas and solutions are tested. The Exploration and Major Grants respond to the important role of a foundation. The Foundation granted over \$8 million during the year together with forward allocations of \$2.4 million.

The Feed Melbourne campaign was run successfully mid-year in 2012, distributing \$240,000 to 34 charities in October, and again in April 2013 raising \$280,000 and distributing \$175,500 including to our major food charity partner FareShare. Leader Community Newspapers provided outstanding coverage and successfully gained the support of Bruce Springsteen during his tour for the 2013 appeal. There is a lot to live up to in 2014! Feed Melbourne engages the broader Melbourne community in giving to help ensure everyone has access to healthy food.

In May 2013 the Foundation brought the Flower Day Appeal back to life and provided another opportunity for donors to give, this time to support projects supporting women and girls facing a range of challenges. The Lady Mayoress' Committee took part in the appeal by hosting the High Tea. It is so important to be working closely with the Lady Mayoress' Committee. It has been an important connection with the past to refresh this appeal in our 90th anniversary year.

This year has been a wonderful example of philanthropy at the end of life. We received an extremely generous bequest from the late Mr Arthur Martin, a retired banker, in memory of his wife Mavis and daughter Lyndal. The Foundation has also received a further major distribution from the Estate of Mr Eldon Foote, which is an incredible legacy for the Australian community.

Fifteen new charitable fund accounts were established by individual donors. Donors are recognising the benefits of establishing a charitable fund account for the long term through the Foundation, taking advantage of our administrative and investment experience, our knowledge of community needs and our thoughtful grantmaking.

In addition to looking back, we looked forward and undertook major work on our website with Butterfly Internet. The website allows much greater interactivity and will enable the Foundation to keep up with the fast changing world of digital and social media. The website also showcases our new brand, which captures the essence of inspiring philanthropy through being brave, relevant, uplifting, and aligning people. The new brand celebrates the energy and diversity of the Foundation's work in granting, philanthropic services and research.

I thank the Board, especially our Chairman, Robert Masters, our President, Lord Mayor Robert Doyle and the Chairs of the Board committees and sub-committees, for their great commitment to the Foundation. They have all given well beyond the call of duty. My talented team has also risen to the challenge of a year of celebration and change.

The Foundation is making its mark as we celebrate 90 years of philanthropy. We are part of a global movement of community foundations, all working with our donors and communities to address the pressing issues of the day and help build resilient, cohesive and vibrant communities for the future.

Thank you for your philanthropy.

**Catherine Brown**  
**LLB, BA, GradDip BusAdmin, FAICD**  
Chief Executive Officer

# CELEBRATING 90 YEARS OF INSPIRING PHILANTHROPY



Lord Mayor Robert Doyle and Lady Mayoress Emma Page Campbell launch the Flower Day Appeal 2013.

**This year we celebrated our 90th anniversary with the community through a series of very special events.**

## FLOWER DAY APPEAL

In recognition of our history, the Foundation's President, the Right Honourable the Lord Mayor Robert Doyle and Lady Mayoress Emma Page Campbell, relaunched the Flower Day Appeal with the Lady Mayoress' Committee at a High Tea event at Myer Mural Hall, Wednesday 1 May 2013. The event was sponsored by The Big Group, Alannah Hill, InterContinental Melbourne The Rialto, Flowers Vasette, Barry Plant and Flowers Victoria.



High Impact Panellists: Chairman Robert Masters, Dipender Saluja, CEO Catherine Brown, Rosemary Addis, Richard Fahey and Peter Hero.

## SOCIAL INVESTMENT + HIGH IMPACT PHILANTHROPY CONVERSATION

We welcomed Peter Hero, Richard Fahey and Dipender Saluja from the Skoll Foundation and Rosemary Addis, Department of Education, Employment and Workplace Relations, to Melbourne as guest speakers for our first philanthropy sector event titled *Social Investment and High Impact Philanthropy Conversation* at the State Library, Thursday 2 May 2013.

## LEARNING FROM THE SKOLL FOUNDATION

Our expert guests from the Skoll Foundation helped to build our knowledge about ways to align our mission with our investment and to increase our impact in critical areas in addition to grantmaking. The Skoll Foundation was established by the founder of eBay, Jeff Skoll, and is regarded as a leader within the international social entrepreneur movement.

Richard Fahey, Chief Operating Officer of the Skoll Foundation, Peter Hero, Board Member of the Skoll Foundation and also the former Chief Executive Officer of the Silicon Valley Community Foundation, and Dipender Saluja, the Managing Director of Capricorn Investments, all provided us with inspiring examples of mission-related investments and social finance opportunities, in which the Skoll Foundation had invested. Sometimes the investment followed an initial grant or was in addition to a grant. We are examining whether a social finance approach can be used within the Foundation's Affordable Housing demonstration project, which is now well into its feasibility study stage.

Henry Bucks supported our Flower Day Appeal.



Joshua and Lily helped to launch 'In Our Community Grants Program'.

## 90TH ANNIVERSARY IN OUR COMMUNITY GRANTS

We launched the *90th Anniversary In Our Community Grants Program* in the Yarra Room of the Melbourne Town Hall on Friday 14 June. We celebrated this occasion with a morning tea with donors, friends and supporters, and charities we have funded over the years. *In Our Community* takes learning beyond the classroom, exposing students to important social issues and programs that help increase life opportunities and support social inclusion. The outcomes of this program will be showcased over the coming year.

## 90TH ANNIVERSARY RESEARCH PROJECT

As this year marked the 90th anniversary of the Lord Mayor's Charitable Foundation, our Research Team looked back over the past 90 years to see how the Foundation has inspired philanthropy.



Chairman Robert Masters welcomed former Lord Mayors Bill Deveney OAM and Trevor Huggard, Lord Mayor Robert Doyle and CEO Catherine Brown to the 90th Anniversary Dinner.

The work of the Foundation has focused around three themes:

1. *Responding to community needs* – through the supporting of hospitals and charities and being there for the community in times of crisis.
2. *Leading the way* – taking the initiative, and not being afraid to support grassroots organisations and emerging issues, while at the same time funding new health technologies.
3. *Future thinking* – we have continued throughout our 90 years to look forward, being positive and engaging in our granting, and most recently creating and increasing social impact for our community.

Our research resulted in nine stories about the work and achievements of the Foundation and the production of a short DVD titled 'Inspiring Philanthropy' which can be viewed online at [www.lmcf.org.au](http://www.lmcf.org.au)

## 90TH ANNIVERSARY OFFICIAL DINNER

In the Swanston Hall of the Melbourne Town Hall we welcomed former Lord Mayors and Board members and 200 special guests to our 90th Anniversary Dinner. The Right Honourable the Lord Mayor Robert Doyle was the guest of honour and made an uplifting 90th anniversary speech.

Leader Community Newspapers Editor in Chief John Trevorrow with the Foundation's staff Sandie Baskin and Alba Granados.






# UNDERSTANDING OUR COMMUNITY



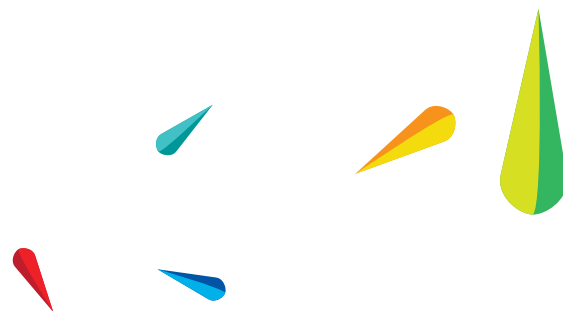




Celebrating with students from Carlton Gardens Primary School our gift to the children of Melbourne, 'Mali, protector of all animals'.



# OUR GRANTS PROGRAM



**Following a period of reflection and review, the Foundation undertook a significant redesign of our Grants Program. The key aspects of this redesign included the creation of three new grant types, a cap on the financial size of organisations that were eligible to apply for particular grant types, a restructure of the Grants Advisory Panels and a new process of grant evaluation.**

This redesign is a part of the Foundation's commitment to continuous improvement in its grantmaking and is an effort to ensure our Grants Program remains relevant and brave in its approach to leading positive change in our community. The development of Capacity Building and Survive & Thrive grant types were very much a response to feedback received from the community sector, and the Foundation's analysis of the most effective form of grants required to achieve change. The Exploration and Proactive Grants categories, as examples of catalytic grantmaking, have proven to be particularly exciting, the outcomes of which we will see over the coming years. This report includes General Grants 2012 and the new programs granted in the first half of 2013.

The most significant changes to the Grants Advisory Panels have been the introduction of Board Members as chairs of each of the Panels, ensuring that the Foundation's Board of Management is closely engaged with the Grants Program. Three young people also joined our Youth Grants Advisory Panel: Emma Hinds and Andrew Burgess are both Alumni from the Foundation's Youth in Philanthropy Program, and Asunta Akeri is a part time employee at the Centre for Multicultural Youth.

## GRANTS SURVEY 2013

In order to ensure that our Grants Program redesign is an effective response to the needs of the not-for-profit sector, the Foundation, in partnership with the Asia-Pacific Centre for Social Investment and Philanthropy (ACSIP) at Swinburne University of Technology, undertook to survey all organisations that had applied for a grant in the previous year. The survey took place in April, 2013.

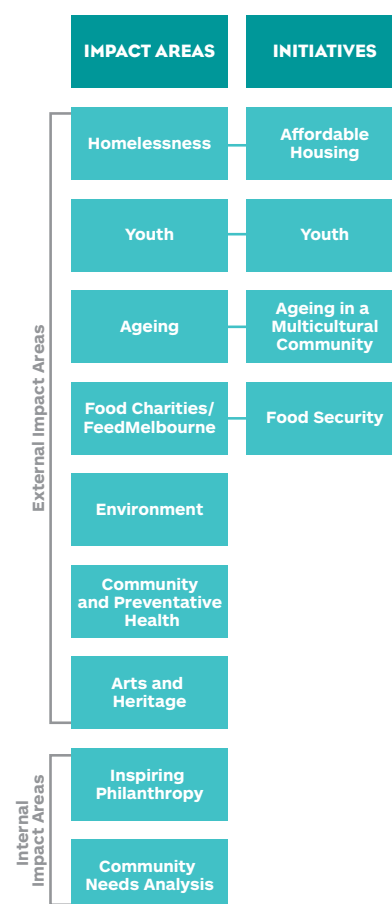
The Foundation would like to thank all of those organisations who responded to the survey. The response was outstanding with 37 per cent of the 600 grant applicants who had applied in 2012 completing the survey. It was interesting that the top two general funding needs identified by applicants were: 64 per cent 'sustaining a current program' and 44 per cent 'general operating support'.

From a selection of 19 capacity building needs, the four most frequently identified were 'fundraising' 52 per cent, 'staff development' 37 per cent, 'program development' 36 per cent and 'partnership development' 32 per cent. This data will help inform the development of the Foundation's Grants Program and also confirms the relevance of the Foundation's new grant categories Survive & Thrive and Capacity Building.

This survey has provided a baseline for further improvements in the Foundation's grantmaking processes. The results overall were extremely positive, particularly in regard to the Foundation's Application and Grant Management processes. Grant applicants made some excellent suggestions about improvements the Foundation can make to streamline grantmaking processes.

One of the key findings of the survey was the need to improve the feedback process. The Foundation is increasing the feedback it provides to unsuccessful applicants.

## OUR IMPACT AREAS AND INITIATIVES





# OUR RESEARCH

**At the Lord Mayor's Charitable Foundation we undertake internal and external research to better understand emerging and current social issues, whilst also providing feedback on the impact of our work.**

## **COMMUNITY INDICATORS: SNAPSHOT OF GREATER MELBOURNE INDICATORS OUR IMPACT AREAS**

Utilising available data, we conducted a Community Needs Snapshot of Metropolitan Melbourne that aimed to:

1. Gain a better understanding of the community condition in Metropolitan Melbourne particularly in three of our initiative areas (Youth, Ageing, and Homelessness), as well as in the granting areas of Arts and Heritage, Community and Preventative Health, and the Environment.
2. Provide a community needs snapshot to assist the Foundation in targeting grants and other Foundation resources.

The results highlighted that three Local Government Areas (LGAs) emerged as being at a disadvantage and having the greatest need in three initiative areas compared to other LGAs in Metropolitan Melbourne. These LGAs were Hume, Melton and Cardinia.

## **DEVELOPMENT OF GRANT IMPACT EVALUATION FRAMEWORK**

Another exciting development in the 2012/2013 year was the development of an evaluation framework with a view to ensuring the Foundation is able to effectively measure the outcomes of our Grants Program. This was developed with the assistance of Regina Hill at Effective Philanthropy. The framework will ensure that the Foundation is able to capture the knowledge and learnings from its grantmaking.

**"ANOTHER EXCITING DEVELOPMENT IN THE 2012/2013 YEAR WAS THE DEVELOPMENT OF AN EVALUATION FRAMEWORK WITH A VIEW TO ENSURING THE FOUNDATION IS ABLE TO EFFECTIVELY MEASURE THE OUTCOMES OF OUR GRANTS PROGRAM."**



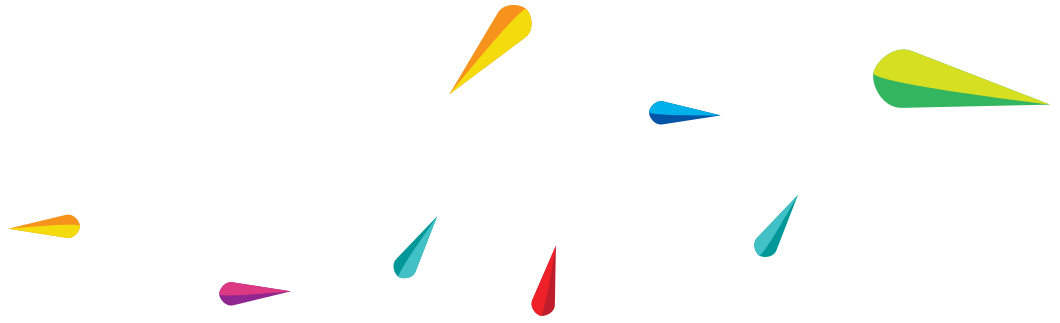
Women's Property Initiative.



# OUR IMPACT IN THE COMMUNITY







90th Anniversary 'In Our Community Grants Program' Launch, Melbourne Town Hall, Friday 14 June 2013.





# AGEING INITIATIVE



Council on the Ageing.

**The Ageing Initiative continues to provide an opportunity for the Lord Mayor's Charitable Foundation to understand the changing demographics of our community. In the last year we have developed the *Next Steps* in this initiative and it has resulted in the Foundation commencing research into 'Ageing in a culturally diverse community'.**

## AGEING IN A CULTURALLY DIVERSE COMMUNITY

Over the next year the Foundation will investigate three different cultural groups and examine where the challenges lie and where a progressive community foundation can have the greatest impact.

Key Questions for the Ageing Research:

- What is the capacity of the three culturally and linguistically diverse (CALD) communities to support ageing well?
- Given demographic and societal changes, what opportunities and challenges lie ahead?
- What is the role and capacity of philanthropy to support ageing well in CALD communities?

## PROACTIVE GRANT

### PER CAPITA

**Longevity and Positive Ageing Project: The Sleeping Giants of Public Policy**

**Grant: \$50,000**

Per Capita is an independent progressive think tank which undertakes research that considers the long term, national challenges of the next decade. The Longevity and Positive Ageing research project will examine the challenges of longevity and develop new policy approaches for positive ageing. The project team will explore three distinct areas of the longevity challenge: Financial Security, Health and Quality of Life, and Participation. The overarching question which goes across these three distinct research areas is: how do we maintain a high quality of life for the 'live long society'? This work will help inform the Foundation's Ageing Initiative.



## "THE LONGEVITY AND POSITIVE AGEING RESEARCH PROJECT WILL EXAMINE THE CHALLENGES OF LONGEVITY AND DEVELOP NEW POLICY APPROACHES FOR POSITIVE AGEING."

Delta Society Australia, 'Delta Therapy Dogs'.

### MAJOR GRANT

#### AGEING – SOCIAL INCLUSION & CULTURAL DIVERSITY

##### Council on the Ageing Victoria – 'Age-Friendly Facilitator'

**\$150,000 (Year 1 – 2012)**

**\$150,000 (Year 2 – 2013)**

An Age-Friendly Facilitator will work with older people, local councils, the private sector and other groups to facilitate the establishment of 20 age-friendly communities across Victoria, with a further 20 to be established in the second year of funding. COTA will recruit, train and involve older people in creating networks to implement the 'WHO Age-friendly cities network cycle of continuous improvement'. Partnerships within local communities will be created in order to increase opportunities for older people to participate in their cities, through inclusion in civic engagement and work with local governments, businesses and other organisations.

### CAPACITY BUILDING GRANTS

Carinya Society	\$24,000
Doncaster Community Care & Counselling Centre Inc.	\$60,000

### SURVIVE & THRIVE GRANTS

Delta Society Australia	\$15,000
Kevin Heinze Garden Centre Inc.	\$20,000
Whittlesea Community Connections	\$20,000

### DIRECT AID & EQUIPMENT GRANTS ROUND TWO 2012

Housing for the Aged Action Group	\$5,000
Waverley Helpmates	\$5,000
Wintringham	\$5,400
Corio Bay Innovators Inc.	\$5,000
Cottage by the Sea	\$8,000
Fitzroy Adventure Playground Inc.	\$5,000
Marillac	\$3,815
Onemda Association Inc.	\$5,000
Operation STITCHES	\$9,700

### DIRECT AID & EQUIPMENT GRANTS ROUND ONE 2013

Gateway Social Support Options Inc.	\$4,831
Mount Beauty Neighbourhood Centre	\$9,950
Sandybeach Centre	\$10,000

### GENERAL GRANTS 2012

Alzheimer's Australia	\$31,000
Arthritis Foundation of Victoria	\$30,000
The Biography Program	\$27,352
Delta Society Australia Ltd	\$17,600
Hope Bereavement Services Inc.	\$15,000
Inner South Community Health Service	\$35,600
Leukaemia Foundation	\$17,740
LifeCircle Australia	\$39,826
Manningham Centre Association Inc.	\$21,133
ME/Chronic Fatigue Syndrome Society	\$20,000
Mercy Hospital for Women	\$19,410
Monkams Centre	\$8,000
Motor Neurone Disease Association	\$13,000
Out Doors Inc.	\$36,057
SANE Australia	\$37,500
Social Firms Australia	\$40,000
Spectrum Migrant Resource Centre	\$36,962
TADVIC	\$20,000
Vasey RSL Care	\$27,720
Victorian Immigrant & Refugee Women's Coalition	\$40,000
Victorian Women and Mental Health Network	\$20,000
Women with Disabilities Victoria	\$10,000

### AGEING GRANTS ADVISORY PANEL

**Chair: Mr Mike Zafiropoulos AM, JP**  
(Board Member)

**Dr Susan Feldman**  
(Monash University)

**Professor Simon Biggs**  
(Brotherhood of St Lawrence)

**Ms Sue Hendy**  
(Council on the Ageing)



# HOMELESSNESS AND AFFORDABLE HOUSING INITIATIVE

**At the Lord Mayor's Charitable Foundation we are continuing our commitment to finding new solutions to address and prevent homelessness and investigating new opportunities to provide affordable housing.**

Our Affordable Housing Think Tank was held at RMIT University in October 2012, and was facilitated by Jacqui Watt, a social housing expert. It was attended by 25 participants representing a diverse range of fields, including social finance, architecture, housing and homelessness, advocacy, academia, government and philanthropy.

The half day Think Tank had two aims:

1. To contribute to the evolution of a new approach to affordable housing.
2. To assist in the identification of opportunities where the Foundation can demonstrate leadership in overcoming homelessness.

## AFFORDABLE HOUSING INITIATIVE

One of the key outcomes of the Think Tank was the prospect of investigating whether the Foundation could make an investment in an affordable housing demonstration project. The demonstration project commenced in early 2013 and is an end-to-end project that incorporates elements discussed at the Think Tank including design and finance. It will explore and test the financial boundaries of various forms of philanthropic and other institutional investment with the incorporation of architectural and community considerations. The Foundation's role in the project extends from community awareness, capacity building, partnership development and financial investment.

## INITIATIVE RELATED GRANT RECIPIENT SUCCESS: LEVERAGING GOVERNMENT ENGAGEMENT

Building on past success, the Homelessness Initiative Signature Grant projects have been recipients of awards and ongoing funding from other sources.

### 24/7 Melbourne's Road Home: Government Support In The Form Of Innovation Action Project

In the last year, the Foundation has also been fortunate that another Signature Grant recipient for Homelessness has been identified as innovative. The Foundation funded *24/7 Melbourne's Road Home* Salvation Army project which received Victorian Government Homelessness Innovation Action Project funding for the development of the *Safe Exits* homelessness project, an extension of the *24/7 Melbourne's Road Home*.

### J2SI: Award Recipient

In May 2013, Sacred Heart Mission was awarded the National Homelessness Services Award for *Journey to Social Inclusion* project. Presented by the Federal Minister for Housing and Homelessness The Honourable Mark Butler MP, the award was for excellence and innovation in addressing long term homelessness. We are pleased to provide a further grant of \$15,000 for evaluation research.

## PROACTIVE GRANTS

### UNIVERSITY OF MELBOURNE

**Extending the evidence base: Homelessness and Intensive Support**

**Grant: \$15,000**

Sacred Heart Mission's *Journey to Social Inclusion* (J2SI) pilot program provided intensive support for three years to 40 people who had been chronically homeless. The J2SI evaluation was the first longitudinal random control trial (RCT) involving the long term homeless in Australia. After three years 80 per cent of the original participants remained involved with the study. The evaluation has provided strong evidence of the social and economic impact of the J2SI pilot.





Kids Under Cover, 'Studio Monitoring Support Program'.

## MAJOR GRANTS

### HOMELESSNESS – EARLY INTERVENTION

**Kids Under Cover –  
'The Kids Under Cover Studio  
Monitoring Support Program  
(Pilot Project)'**

**\$80,000 (Year 1 – 2012)**

**\$47,000 (Year 2 – 2013)**

An important new initiative, the Kids Under Cover Studio Monitoring Support Program will fill a critical gap in KUC's service provision. The Studio Monitoring Support Program will enhance KUC's capacity to support at risk young people over the long term to prevent them from falling through the cracks and becoming disengaged following the closure of their initial case management. The employment of a Studio Monitoring Officer will ensure regular contact with the clients to ensure this does not occur by monitoring the low-risk cases and linking high-risk cases to appropriate external support services through a referral program.

### HOMELESSNESS – EDUCATION AND TRAINING

**Whitelion –  
'Streets to Work Program'**  
**\$90,000 (Year 1 – 2012)**  
**\$90,000 (Year 2 – 2013)**

The 'Streets to Work Program' is a collaborative project between Whitelion and Open Family Australia (OFA) who will work together to assist homeless young people in the Wyndham area to pursue a positive pathway to work. The program will incorporate the outreach and therapeutic supports provided by OFA with the vocational case-management of Whitelion's specialist Employment Program. A dedicated Employment Caseworker will provide intensive employment support to highly vulnerable young people experiencing (or at risk of experiencing) homelessness who are already involved in OFA's outreach services.

## DIRECT AID & EQUIPMENT GRANTS ROUND TWO 2012

Bethlehem Community Inc.	\$4,000
Family Access Network	\$5,000
Global Care Epping	\$4,000
Hope City Mission Inc.	\$5,000
Meals @ the Bridge Lifeline	\$5,000
Prahran Mission	\$5,750
Project Respect	\$5,000
Public Interest Law Clearing House	\$4,435
Western Suburbs Legal Service	\$5,000
Workbridge & Outer East Employment Service	\$3,000

## DIRECT AID & EQUIPMENT GRANTS ROUND ONE 2013

Dingley Village Community	\$10,000
Frankston Churches Community Breakfast Inc.	\$5,000
Healesville Interchurch Community Care Inc.	\$10,000
Melbourne Hebrew Ladies Benevolent Society	\$5,000
South Eastern Community Care	\$10,000
Southern Peninsula Community Support & Information Centre	\$8,760
St. Mary's House of Welcome	\$6,950
The Way Community	\$4,500

## CAPACITY BUILDING GRANTS

Caroline Chisholm Society	\$40,000
McAuley Community Services for Women	\$40,000
Women's Property Initiative	\$40,000

## SURVIVE & THRIVE GRANTS

Caroline Chisholm Society	\$30,000
Endeavour Ministries Inc.	\$27,000
The Queen's Fund	\$30,000
St Mary's House of Welcome	\$30,000

## HOMELESSNESS GRANTS ADVISORY PANEL

**Chair: Mr Jon Edwards**  
(Board Member)

**Ms Patrice Scales**  
(Catholic Social Services Victoria)

**Associate Professor David MacKenzie**  
(Swinburne Institute for Social Research)

**Ms Sarah Toohey**  
(Council for Homeless Persons)

# YOUTH INITIATIVE

**The aim of the Lord Mayor's Charitable Foundation Youth Initiative is to work with our partners to increase the number of young people making successful and healthy transitions from childhood to adulthood.**

There are a number of barriers that can prevent young people from achieving their educational and employment potential. Through the Youth Initiative the Foundation aims to maximise the impact of our support of young people.

A project in partnership with the Centre for Multicultural Youth is reviewing programs which work with young refugees and newly arrived young people to understand what works and what doesn't work in this field. This project will be completed in early 2014.

## MAJOR GRANTS

### YOUTH – OUT OF HOME CARE / HOMELESSNESS PREVENTION

**Berry Street –  
'Stand By Me (Pilot Program)'**

**\$100,000 (Year 1 – 2012)**

**\$100,000 (Year 2 – 2013)**

**\$100,000 (Year 3 – 2014)**

Berry Street work with children, young people and families who have often suffered great distress and significant harm growing up in families where violence, neglect, abuse, trauma and poverty have prevented them from having a good childhood. The Stand By Me project will pilot, over three years, an intensive case support service for the most at risk young people leaving state care throughout Metropolitan Melbourne. The project aims to prevent homelessness and will ensure that these young people will have access to: secure accommodation; linkages to the community; support for training, volunteering, and/or other gainful ways of occupying their time; assistance to learn the skills needed for independent living; and to other community services.

### YOUTH – OUT OF HOME CARE

**Polyglot Theatre –  
'Expecting Something'**

**\$55,000 (Year 1 – 2012)**

**\$55,000 (Year 2 – 2013)**

Polyglot's 'Expecting Something' is an innovative approach to mobilising young mothers to strengthen vital relationships with their baby, family and community through creative play and performance. The project includes mapping the mother and child's social and emotional development and community engagement over a two year period through creative play workshops in a range of supported playgroup settings, an interactive performance and the development of a shared artwork, which will be presented at a local community event. The project will engage up to 60 vulnerable young mothers, and their children, in the Moe, Morwell and Churchill areas.



Polyglot Theatre 'Expecting Something' Project.



Special Olympics Australia 'Access to the 10th Special Olympics Australia National Games'.



## PROACTIVE GRANTS

### SCHOOL FOR SOCIAL ENTREPRENEURS

#### SSE Operational Capacity Building Project

**Grant: \$40,000**

SSE's mission is to address inequalities and social exclusion by supporting social entrepreneurs from all backgrounds to transform their talent into real social outcomes. This aim of this capacity building initiative is to increase fee-for-service potential for programs; develop opportunities for new income streams that utilise SSE's core competencies; and develop a SSE fellows network strategy that provides business value and/or social impact.

### SPECIAL OLYMPICS AUSTRALIA

#### Access to the 10th Special Olympics Australia National Games

**Grant: \$35,000**

The 10th Special Olympics Australia National Games will involve more than 1,200 athletes of all levels competing (state against state) in 16 Olympic style and demonstration sports and events. This grant will help reduce the levy cost to an affordable level for the athletes and their carers to participate. Many athletes may not otherwise be able to afford the opportunity due to reasons of personal financial hardship.

## CAPACITY BUILDING GRANTS

Ardoch Youth Foundation	\$20,000
Kids Off The Kerb	\$35,000
The Onemda Association	\$25,000
Realise Enterprises	\$22,000
Refuge of Hope	\$28,000
St Kilda Youth Service	\$40,000
The Social Studio	\$20,000

## SURVIVE & THRIVE GRANTS

Aboriginal Literacy Foundation	\$24,000
Action on Disability	\$20,000
The Link Centre	\$25,000
New Hope Foundation	\$30,000
Student Youth Network	\$25,000
Youth Development Australia	\$25,000

## DIRECT AID & EQUIPMENT GRANTS ROUND TWO 2012

Self Help Addiction Resource Centre Inc.	\$5,540
Southern Family Life Service Association Inc.	\$5,000
Student Youth Network Inc.	\$10,000
The Youth Junction Inc.	\$7,500

## DIRECT AID & EQUIPMENT GRANTS ROUND ONE 2013

Aboriginal Literacy Foundation	\$10,000
Corio Bay Innovators	\$8,000
ECHO Inc.	\$8,000
Emerald Hill Mission	\$10,000
Express Media Inc.	\$7,000
Opening the Doors Foundation	\$7,000
Student Youth Network Inc.	\$10,000

## GENERAL GRANTS 2012

Berry Street Inc.	\$40,000
Centre for Multicultural Youth	\$40,000
Child & Family Services Ballarat	\$40,000
Children's Protection Society	\$40,000
EACH Limited	\$33,000
Gateway Community Health	\$40,000
Good Shepherd Youth and Family Services	\$24,000
InTouch Inc.	\$36,000
Link Centre	\$7,200
Mirabel Foundation	\$10,000
Noah's Ark	\$25,000
Open Family Australia	\$24,335
River Nile Learning Centre	\$10,000
Sandy Ridge House Inc.	\$10,000
Shekinah Homeless Services	\$40,000
Twentieth Man Fund	\$20,000
UnitingCare East Burwood	\$7,000
Villa Maria Society	\$30,000
Whitelion	\$30,000
White Ribbon Foundation	\$39,000
Yarra Community Housing	\$37,445

## YOUTH GRANTS ADVISORY PANEL

**Chair: Ms Lydia Wilson**

(Board Member)

**Professor Brian Caldwell**

(Educational Transformations)

**Ms Georgie Ferrari**

(Youth Affairs Council of Victoria)

**Ms Asunta Akeri**

(Centre for MultiCultural Youth)

**Ms Emma Hinds**

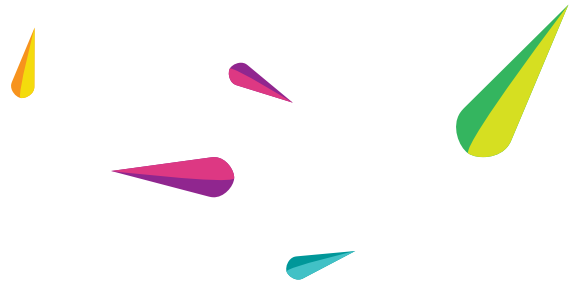
(YIP Alumni)

**Mr Andrew Burgess**

(YIP Alumni)



# YOUTH INITIATIVE



## YOUTH IN PHILANTHROPY

Our Youth in Philanthropy Program aims to inspire young people to use their enthusiasm, creativity and energy to begin a life-long commitment to giving through activities that have a positive impact on the communities they live and will, one day, work in. Students from 16 schools across metropolitan Melbourne were each allocated \$15,000 to grant to three charitable organisations in their local and broader community.

Working with experienced mentors from the charitable and philanthropic sectors, the students undertook a rigorous program that taught them about philanthropy, grantmaking, social awareness and community leadership. A total of \$240,000 was granted by the participating schools.

In 2012 we conducted Youth in Philanthropy Coordinator interviews to understand the value and potential of the program to the participating schools and students. The coordinators are the teachers that help facilitate the schools' participation and they are an invaluable resource for the program. Interviewing the coordinators provided a great insight into the success of the program.

The coordinators emphasised that Youth in Philanthropy is a unique and valuable program to the schools and students. All of the coordinators agreed that the charity visits and the empathy gained by students are the most valuable aspects of the program.

The Youth in Philanthropy Program will continue to grow, from 18 schools in 2013 to 24 schools in 2014 and the launch of an exciting new Alumni program will provide an opportunity for students to continue with their philanthropic endeavours.

**"THANK YOU FOR PROVIDING US WITH THE OPPORTUNITY TO WORK IN THE YOUTH IN PHILANTHROPY PROGRAM WHICH SHOWED US IT WAS POSSIBLE TO WORK WITH OTHERS WITH A SHARED LOVE OF HUMANITY, AND TOGETHER, MAYBE MAKE A CHANGE IN OUR COMMUNITY."**



Hume Central Secondary College 2013.



Ivanhoe Grammar School 2013.

**"THE OPPORTUNITY TO PARTICIPATE IN THE WONDERFUL YOUTH IN PHILANTHROPY PROGRAM IS SOMETHING THAT I AM TRULY GRATEFUL FOR, AS IT HAS GIVEN ME AN INSIGHT INTO WAYS IN WHICH WE CAN CONTRIBUTE TO OUR COMMUNITY."**

## YOUTH IN PHILANTHROPY GRANTS AUGUST 2012

### AUSTRALIAN INTERNATIONAL ACADEMY

Make a Wish Foundation	\$8,000
Brotherhood of St Laurence – Coolibah Centre	\$3,000
RDNS West Melbourne	\$4,000

### CAMBERWELL GRAMMAR SCHOOL

Redkite	\$2,000
Interchange Inner East	\$6,000
Prahran Mission	\$7,000

### HUME CENTRAL SECONDARY COLLEGE

Caroline Chisholm Moonee Ponds	\$5,500
Heart Kids	\$4,500
Foodbank	\$5,000

### KING DAVID SCHOOL

Kids Under Cover	\$9,500
Odyssey House	\$2,500
Asylum Seekers Resource Centre	\$3,000

### MAC.ROBERTSON GIRLS HIGH SCHOOL

Polyglot Theatre	\$6,250
Friends of the Earth – South Melbourne Commons	\$5,250
Leukaemia Foundation	\$3,500

### MELBOURNE GIRLS COLLEGE

FareShare	\$5,000
Berry Street	\$8,000
Urban Seed	\$2,000

### MELBOURNE GRAMMAR SCHOOL

Taralye	\$4,000
Waverley Industries	\$5,000
Eastern Emergency Relief Network	\$6,000

### MELBOURNE HIGH SCHOOL

TADVic	\$5,500
Guide Dogs Victoria	\$4,800
Fight Cancer Foundation	\$4,700

### METHODIST LADIES COLLEGE

Second Bite	\$6,350
Big Brothers Big Sisters	\$3,650
TLC for Kids	\$5,000

### PARADE COLLEGE

Lentara Uniting Care	\$3,000
Lighthouse Foundation	\$7,000
Opening the Doors Foundation	\$5,000

### RINGWOOD SECONDARY COLLEGE

Heathmont InterChurch Help	\$5,211
Brenda House (Safe Futures Foundation)	\$4,789
The Wilderness Society	\$5,000

### ST MICHAEL'S GRAMMAR SCHOOL

Sacred Heart Mission	\$4,500
Ardoch Youth Foundation	\$3,000
Bayley House	\$7,500

### TAYLORS LAKES SECONDARY COLLEGE

Wintringham	\$6,250
River Nile Learning Centre	\$5,523
CERES	\$3,227

### TRINITY GRAMMAR SCHOOL

Australian Conservation Foundation	\$3,000
Very Special Kids	\$5,000
Church of All Nations Community Support Agency	\$7,000

### UNIVERSITY HIGH SCHOOL

STREAT	\$7,000
Westside Circus	\$3,000
St Mary's House of Welcome	\$5,000

### WERRIBEE SECONDARY COLLEGE

UnitingCare Werribee Housing and Support	\$4,000
Whitelion	\$6,500
Western Chances	\$4,500

<b>Total</b>	<b>\$240,000</b>
--------------	------------------

# FOOD SECURITY INITIATIVE

**The Lord Mayor's Charitable Foundation has a long history of addressing food security through providing funding for food aid to many of the small grass roots charities providing food and material aid to Melbourne's most vulnerable.**

In the last three years, the Foundation has also been a proud partner in Feed Melbourne with FareShare and Leader Community Newspapers. Feed Melbourne raises funds to help charities collect, cook and distribute food to people who need it most.

Food security, already a significant problem for those most vulnerable in our society, is now being exacerbated by climate change. There is a growing recognition that threats resulting from climate change, natural disasters and reduced agricultural productivity are likely to have an impact on food security. Developing sustainable food systems, reducing food waste and combating food insecurity will be a key focus of the Foundation's work in the next three to five years.

The work plan for the Food Security Initiative has three aims:

- 1. Reducing food insecurity especially for people facing disadvantage.**  
The challenge of building sustainable and resilient food systems and addressing the growing rise in food insecurity, to essentially 'feed more with less' will require innovative and efficient solutions. This will be a key area of focus over the next year.
- 2. Reducing food waste and increasing resource efficiency.**  
We know that Australians discard more than 20 per cent of the food they purchase ([www.foodwise.com](http://www.foodwise.com)). The Foundation will continue to work with partners in this area to address the issue of food waste and its impact on the environment, as well as exploring how resources can be used more efficiently.
- 3. Sustainable food systems and urban agriculture.** With more of the world's populations living in cities and urban areas, urban agriculture is being seen as a way of re-engaging people with food and food production as well as addressing food security. Practices such as backyard and rooftop gardening, through to community gardening and composting schemes, to the planting of edible landscapes and the establishment of new food retailing opportunities, often through social enterprise, are just some of the initiatives which the Foundation will be exploring.



Over the coming year the Foundation will initially focus on two key projects. The first project will assist the Foundation to better understand the needs and requirements of the community food sector in Greater Melbourne, with a specific focus on transport needs and logistics. The project is titled: *Food Delivery System to the Emergency Relief and Community Food Program*. A forum will be held in 2014 to discuss the outcomes of the research and how it will inform the Foundation's granting and potential investments in this area.

The second project will focus on the area of Urban Agriculture, with a focus on the health, well-being and educational benefits, as well as sustainability and community engagement.

## PROACTIVE GRANTS

### Social Traders 'Crunch' Places

**Grant: \$50,000**

Social Traders are expanding their Crunch Program to include positions which are funded in partnership, or self-funded. The Foundation has supported two 'themed' places, the first in Food Security as a part of the Food Security Initiative and a second in 'Youth at Risk' as a part of the Youth Initiative.





Fareshare.

## FEED MELBOURNE

The partnership between the Lord Mayor's Charitable Foundation, Leader Community Newspapers and FareShare continued in 2012, with a total of \$181,637 raised during the Feed Melbourne campaign in 2012. As the campaign was moved to April in 2013, the total raised by 30 June, 2013 was \$280,000.

A total of \$240,000 was distributed to 34 food service charities in October 2012 and \$175,500 to 22 charities in June 2013. Given the wonderful response to the campaign in 2013 an additional \$178,000 will be distributed in grants in the 2013/14 year. We are now excited to continue the Feed Melbourne partnership with FareShare and Leader Community Newspapers for a further three years.

These funds are used to increase capacity to manage and provide food (such as through the purchase of new fridges and freezers), developing safe food handling practices, increasing food distribution and the transport and purchase of food.



## FEED MELBOURNE GRANTS 2012

African Australian Network	\$10,000
Asylum Seeker Resource Centre	\$10,000
Australian Community Support Organisation	\$10,000
Bairnsdale Neighbourhood House	\$10,000
Ballarat Community Health	\$8,000
Bendigo Family & Financial Services	\$2,500
Cardinia Combined Churches Caring	\$10,000
Careworks Sunrangers	\$3,100
Christ Church Community Centre	\$5,000
City Life	\$10,000
Cloverdale Care Inc.	\$10,000
Combined Churches Caring Melton	\$10,000
Elisha Care	\$10,000
Emerald Hill Mission	\$10,000
Freedom Care Inc.	\$5,000
Gateway Social Support Options	\$10,000
Gathering Place Health Service	\$10,000
Hope City Mission	\$10,000
Hotham Mission Asylum Seeker Project	\$10,000
Loaves & Fishes	\$10,000
McAuley Champagnat Programme	\$10,000
Melbourne Jewish Community Charity Fund	\$5,000
New Horizons Welfare Services	\$5,000
Northpoint Seventh Day Adventist Church	\$10,000
Olympic Adult Education	\$3,000
Peninsula Christian Care	\$8,000
Peninsula Life Care	\$10,000
Royal District Nursing Service	\$5,000
Salt Foundation	\$10,000
Salvation Army Kingston Gardens	\$5,400
Uniting Care Sunshine & Broadmeadows	\$5,000
Waverley Benevolent Society	\$3,000
The Wellington Collingwood	\$10,000
Western Region Health Centre – Health Works	\$5,000

## FEED MELBOURNE GRANTS 2013

Anglican Parish of Longbeach	\$10,000
Cornerstone Contact Centre	\$10,000
Darebin Information, Volunteer & Resource Service	\$600
Flowerdale Community House	\$5,000
Foothills Community Care	\$3,000
Gateway Social Support Options	\$10,000
Plenty Valley Church Community Meals Kitchen	\$10,000
Helping Hands Mission	\$10,000
Holy Fools Inc.	\$5,000
Hope City Mission	\$7,000
Latitude Direction for Young People	\$10,000
Lentara UnitingCare	\$10,000
New Hope Community Centre	\$5,500
NorthPoint Centre	\$4,400
Orbost Youth Group Inc.	\$10,000
Salt Foundation	\$10,000
St Mark's Community Centre	\$10,000
Theodora's Cheerful Givers	\$5,000
Victoria Police Yarra Blue Light	\$10,000
We Care Community Services	\$10,000
Wesley Mission Crisis & Homeless Support Service	\$10,000
Wingate Avenue Community Centre Inc.	\$10,000

## FEED MELBOURNE GRANTS ADVISORY PANEL

**Sandy Dudakov**

(Fareshare)

**Julie Vine**

(FoodBank Victoria)

**Nick Miller**

(Leader Newspapers)

**Anita Hopkins**

(Lord Mayor's Charitable Foundation)

# ARTS AND HERITAGE



Songlines Aboriginal Music Corporation 'Skin Choir'.

This year the Lord Mayor's Charitable Foundation included the area of Heritage in our Arts grants category and focused on projects and programs that supported engagement with the arts, preserving heritage and increasing life opportunities through the arts.

## PROACTIVE GRANTS

### HUMAN RIGHTS COMMISSION AND SYDNEY COMMUNITY FOUNDATION

**Twenty Years, Twenty Stories**  
**Grant: \$15,000**

The Twenty Years: Twenty Stories project celebrated the 20th anniversary of the Disability Discrimination Act. Twenty Years: Twenty Stories celebrated the progress of disability rights in Australia and encouraged greater participation in disability issues. Grants of \$5,000 each were provided to three charities – Noah's Ark, Peninsula Access Support and Training, and the Summer Foundation.

### KAGE

**Team of Life**

**Grant: \$50,000**

KAGE is developing a new work called Team of Life, which uses sporting metaphors to illuminate stories of young culturally diverse people who have experienced hardship. Team of Life enables young people to come to terms with traumatic experience without having to speak directly about it. This grant supports the Team of Life community workshops with Aboriginal and Torres Strait Islander youth and young people from refugee backgrounds. The Team of Life will premiere in 2014 at the Melbourne International Festival of the Arts.

## CAPACITY BUILDING GRANTS

Disability Media	\$40,000
Footscray Community Arts Centre	\$40,000
Polyglot Puppet Theatre	\$35,000
The Stella Prize	\$40,000
St Martin's Youth Arts Centre	\$35,000
Theatre Works	\$35,000

## SURVIVE & THRIVE GRANTS

Express Media	\$27,754
Petite Grand Kaboom	\$30,000
Songlines Aboriginal Music Corporation	\$30,000
The Substation	\$30,000

## GENERAL GRANTS 2012

Auspicious Arts Projects	\$15,000
Australian Children's Music Foundation	\$15,000
Back to Back Theatre	\$10,000
Big Issue Australia	\$23,000
Disability Media Inc.	\$16,000
Disabled Wintersport Australia	\$33,600
Helping Hoops Inc.	\$6,800
Jazz and Blues Development Fund	\$15,700
Kids Thrive	\$30,000
Pigeons Projects Inc.	\$30,000
Polyglot Puppet Theatre Company	\$26,000
Somebody's Daughter Theatre Company Inc.	\$20,000
The Song Room	\$31,280
St Kilda Gatehouse	\$10,000
Victorian Aboriginal Child Care Agency Co-op	\$39,600
Writers Victoria	\$18,000

## DIRECT AID & EQUIPMENT GRANTS ROUND TWO 2012

Koorie Heritage Trust	\$5,967
Polyglot Puppet Theatre	\$5,000
The Substation	\$5,400
Visionary Images	\$5,000

## DIRECT AID & EQUIPMENT GRANTS ROUND ONE 2013

A is for Atlas	\$7,000
E.motion 21 Inc.	\$10,000
Maribyrnong Festival	\$6,000
Queen Victoria Women's Centre Trust	\$9,232

## ARTS & HERITAGE GRANTS ADVISORY PANEL

**Chair: Ms Amanda Milledge**  
(Board Member)

**Professor Sue Nattrass AO**  
**Ms Carmel Morfuni**

(Victorian Government Health Practitioner's Registration Board)

**Mr Chris Thompson**  
(Random Acts)

**Mr Trevor Huggard**  
(Trevor Huggard and Associates)

# COMMUNITY AND PREVENTATIVE HEALTH

The Lord Mayor's Charitable Foundation has a tradition of funding health projects and programs through public hospitals and other health charities. This year health was reintroduced as a grants category with a focus on community and preventative health.

## SIGNATURE GRANT

**Olivia Newton-John Wellness and Cancer Centre (Austin Health)**  
Grant: \$100,000

## CAPACITY BUILDING GRANTS

Aboriginal Family Violence and Legal Service	\$30,000
Advisory Council for Children with Impaired Hearing	\$36,000
Heartkids Victoria	\$16,000
Summer Foundation	\$30,000
TADVIC	\$8,000
The Wellington Collingwood	\$40,000
Women with Disabilities Victoria	\$15,000

## DIRECT AID & EQUIPMENT GRANTS ROUND TWO 2012

Blind Sports Victoria	\$6,354
Butterfly Foundation	\$7,884
Christ Church Community Centre	\$7,500
Early Education Program for Hearing Impaired Children	\$6,565
Friends of Sammy-Joe Foundation	\$5,000
Gellibrand Support Services Inc.	\$4,500
Griefline Services	\$3,000
Harm Reduction Victoria	\$5,000
iCare Special Needs Group Inc.	\$9,910
Impact Support Services	\$4,000
Interchange Western Region Association Inc.	\$4,000
Karinya Melton Counselling Centre	\$5,000
National Dental Foundation	\$5,000
St Kilda Mums	\$4,900
Tweddle Child & Family Health Service	\$8,500
Very Special Kids	\$4,000

## DIRECT AID & EQUIPMENT GRANTS ROUND ONE 2013

Australian Breastfeeding Association	\$6,030
Footscape Inc.	\$7,200
Spinal Muscular Atrophy Association	\$10,000
Surf Life Saving Lakes Entrance	\$4,920

## SURVIVE & THRIVE GRANTS

Brainlink Services	\$30,000
Down Syndrome Victoria	\$30,000
Smiling Mind	\$30,000

## COMMUNITY AND PREVENTATIVE HEALTH GRANTS ADVISORY PANEL

**Chair: Mr Jon Edwards**  
(Board Member)

**Mr Michael Geary**  
(Banyule Community Health Service)

**Ms Rhyl Gould**  
(Rhyl Gould Consulting)

**Ms Lynne Wenig**  
(CentreBrain)



St Kilda Mums. Photo by Glen Daniels. Courtesy of Leader Community Newspapers.



# ENVIRONMENT

In 2008 the Lord Mayor's Charitable Foundation introduced Environment as a new impact area and this year the focus was on projects that supported sustainable cities and communities, sustainable food systems and healthy water ecosystems. The Foundation applied the Australian Environmental Grantmakers Network guide in developing our strategy in this grants area.



Lord Mayor Robert Doyle launches the new Riverkeeper's boat funded by a Proactive Grant.

## PROACTIVE GRANTS

### YARRA RIVERKEEPERS ASSOCIATION

#### A Boat for the Yarra Riverkeeper Association

**Grant: \$40,000**

The Yarra Riverkeeper Association is a not-for-profit community organisation working to re-connect people to their river. The organisation operates a patrol boat, monitors river health and affairs, runs educational events and tours, and works with a large number of grass-roots groups and the authorities to advocate directly and through the media for river care. They have earned the reputation of being the voice of the Yarra River. This grant was for the purchase of a new patrol boat.

### AUSTRALIAN CONSERVATION FOUNDATION

#### The Australian National Development Index (ANDI)

**Grant: \$30,000**

The Australian National Development Index (ANDI) is a collaboration of 50 leading community organisations, church groups, businesses and universities that aims to introduce a holistic measure of progress, which reflects the views of Australians in an ongoing, participatory process. In 2010, ANDI was launched and some 50 organisations have since signed up to the project. This grant provided funding to complete a detailed strategic business plan.

## CAPACITY BUILDING GRANTS

Alternative Technology Association	\$20,000
Australian Environmental Grantmakers Network	\$20,000
Environment Defenders Office (Victoria)	\$40,000
Environment Victoria	\$30,000
Peninsula Speaks	\$30,000

## SURVIVE & THRIVE GRANTS

Sustainable Living Foundation	\$30,000
Victorian National Parks Association	\$30,000

## GENERAL GRANTS 2012

Alternative Technology Association	\$30,000
Australian Conservation Foundation	\$38,000
Bush Heritage Australia	\$40,000
CERES Community Environment Park	\$20,000
Dolphin Research Institute	\$22,400
Greenfleet Australia	\$20,000
Live & Learn Environmental Education	\$15,000
Regional Arts Victoria	\$30,000
Seaworks Foundation	\$30,000
Victorian National Parks Association	\$30,000
Yarra Riverkeepers Association	\$20,000
Zoos Victoria	\$30,000

## ENVIRONMENT GRANTS ADVISORY PANEL

**Chair: Mr Daniel Leighton**  
(Board Member)

**Professor Allan Rodger**

**Councillor Cathy Oke**  
(City of Melbourne)

**Dr Robyn Leeson**  
(Netbalance)

**Dr Bronwyn Burton**  
(Environmental Protection Authority)

# INSPIRING PHILANTHROPY



Michael Short interviews Shane, a participant in the YMCA's Bridge Project.

**Throughout 2012 the Lord Mayor's Charitable Foundation celebrated the 10th anniversary of our Youth In Philanthropy program. We celebrated this milestone at our *Inspiring Philanthropy* event with schools, charities and donors joining us at the Melbourne Town Hall.**

Wurundjeri elder Joy Murphy-Wandin warmly welcomed guests with a traditional 'Welcome to Country' and she encouraged young people to 'always have a sense of community'.

The event showcased the YMCA Bridge Project, a program for young people exiting juvenile justice to engage in education and training. Guest speaker Mick Cronin, Program Manager at the Bridge Project, and Shane, a participant, talked about the program's benefits to young people making a positive transition from juvenile justice to employment using a combination of mentors, education and training.



Students from Youth In Philanthropy join the Student Panel Discussion with Michael Short.

Six participants from the Youth in Philanthropy program joined Michael Short, editor and writer of The Age's *The Zone*, on stage for a discussion about young people, philanthropy, responsibility, leadership and community.

Guests were inspired by the comments made by young people about their willingness and determination to make a difference, to address inequalities in our community and their optimism for the future. A special thank you to the William Angliss Charitable Fund for their continued support of the Youth in Philanthropy program.



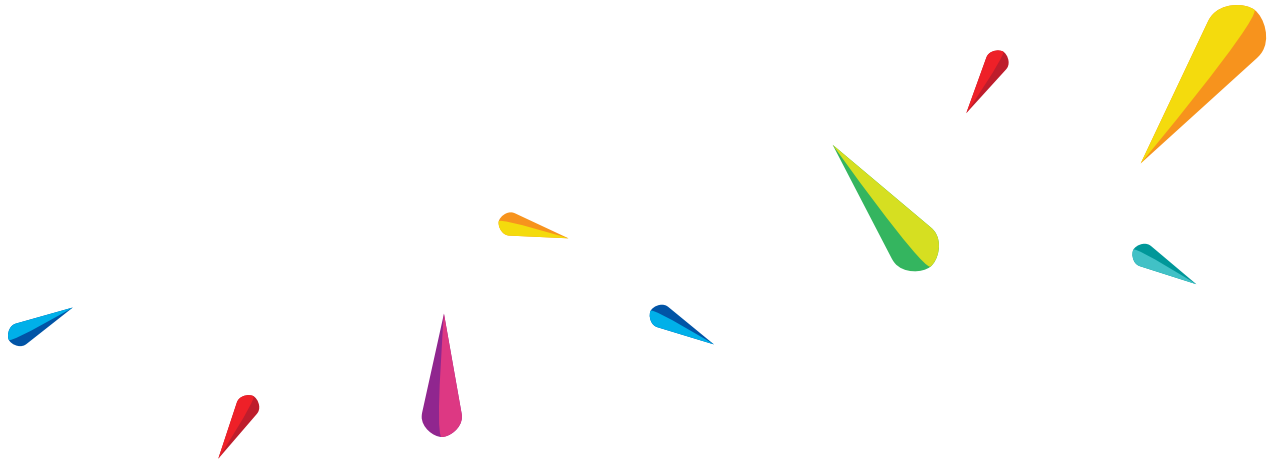
The Song Room, students from Debney Meadows Primary School perform at our *Inspiring Philanthropy* event.



# INSPIRING PHILANTHROPY







Flower Day May 2013.  
Photo by Gerard Hynes.



# ELDON AND ANNE FOOTE DONOR ADVISED FUND

**The generosity of the Eldon and Anne Foote Donor Advised Fund continues to support a diverse range of charitable organisations, helping to bring change where it is needed most.**

In 2012/2013 a total of 22 organisations have been supported, ranging from a four-year scholarship within the Australian Ballet School for a student who may not otherwise be able to attend the school due to financial difficulty; through to seed funding for a social enterprise called the Social Outfit Incorporated in Sydney and support to train volunteers for the 10th National Special Olympics to be held in Melbourne in 2014.

## ELDON AND ANNE FOOTE DONOR ADVISED FUND GRANTS

Australian Foundation For Mental Health Research	\$25,000
Australian Ballet School	\$125,000
Cystic Fibrosis Qld Inc	\$20,000
Documentary Australia Foundation	\$30,000
Eco Barge Clean Seas Inc	\$48,630
Eldon D Foote Foundation	\$45,000
Guide Dogs Victoria	\$30,000
Heide Park & Art Gallery	\$40,000
Insight Education Centre For The Blind And Vision Impaired Scholarship Fund	\$25,000
Marine Stewardship Council	\$10,000
Melba Mem. Cons. T/A Dame Nellie Melba Opera Trust	\$30,000
Muscular Dystrophy Association Of NSW	\$25,000
Royal Flying Doctor Service Of Australia (Victorian Section)	\$30,000

Sir David Martin Foundation	\$31,102
Social Outfit Inc	\$60,000
Special Olympics Australia	\$60,000
Stewart House	\$27,000
Surfrider Foundation Australia	\$11,405
University Of Sydney	\$50,000
Youth Futures WA Inc	\$20,000
Volunteering SA & NT	\$20,000
YWCA Of Adelaide Inc	\$76,000

Photo courtesy of the Australian Ballet School.



# A GENEROUS LEGACY – GIFTS IN WILLS



Eldon and Anne Foote.

## ESTATE OF ELDON FOOTE

This year the Foundation received a significant distribution from the Foote Foundation and related entities. The late Mr Foote's iconic bequest has changed the capacity of the Foundation to make a difference within the Australian community. The estate administration is nearing completion.

The Major Grants and some of the Grants Program have been funded through Mr Foote's most generous and remarkable bequest.



Arthur and Mavis Martin.

## ARTHUR DAVID POWELL MARTIN (ESTABLISHED 2013)

Through his Will, the late Mr Arthur Martin established the Mavis, Lyndal and ADP Martin Fund with the Lord Mayor's Charitable Foundation in memory of his wife Mavis and daughter Lyndal. Arthur was a retired banker who was a keen gardener and a highly skilled investor. He was interested in health and gardening. This generous bequest is an outstanding example of philanthropy.

The Foundation will make grants for charitable purposes from Mr Martin's bequest, including projects relating to community health and food security.

**"LAWRENCE HAS BEEN A GENEROUS DONOR SINCE 1976 AND ESTABLISHED THE LAWRENCE AND JOAN COHN FUND IN 2004 IN MEMORY OF HIS WIFE JOAN."**

## LAWRENCE & JOAN COHN (ESTABLISHED 2004)

Lawrence has been a generous donor since 1976 and established the Lawrence and Joan Cohn Fund in 2004 in memory of his wife Joan. Lawrence gave freely of his time to community groups with his membership of Kew Presbyterian (later Uniting) Church and subsequently Pilgrim Uniting Church in Doncaster, and provided invaluable aid over prolonged periods to the Friends of the Royal Botanic Gardens and the Melbourne Musicians Society. In this financial year Mr Cohn left a generous bequest for general charitable purposes.

The Lord Mayor's Charitable Foundation is grateful for the generous ongoing support received from the: Collier Charitable Fund (\$168,790), Percy Baxter Charitable Trust – Perpetual Trustees (\$125,000), and William Angliss Charitable Fund (\$110,000).



# WOMEN IN PHILANTHROPY – MAKING A DIFFERENCE TOGETHER

In our 90th anniversary year, we feature Women in Philanthropy and the major impact women are having on the Foundation's giving. We are delighted to showcase some of the inspiring women who are demonstrating leadership in philanthropy.

## AUSTRALIAN WOMEN DONORS NETWORK

The Lord Mayor's Charitable Foundation has partnered with the Australian Women Donors Network to enhance our support of women and girls in all our granting areas.

We introduced a new question in our grant application forms and asked further questions about the impact of proposed projects on women and girls, and men and boys during our grant assessment processes. We are also applying a gender lens to our Initiative projects.



From Left: Alice Collier, Edith Collier, Annette Collier.

## THE COLLIER SISTERS – REMEMBERING THEIR LEGACY

The Collier Charitable Fund was established after the death of Jenkin Collier's youngest daughter Edith in 1954. Jenkin's three daughters Annette, Alice and Edith were successful business women and philanthropists in their own right and bequeathed £1.25 million from their estates to establish the Collier Charitable Fund. Through Edith Collier's Will, the Lord Mayor's Charitable Foundation is a grateful recipient of the Collier Charitable Fund. The Collier sisters' story is truly inspiring.

The positive impact the Collier sisters have had on Melbourne is immeasurable; hundreds of charities and thousands of people have been assisted thanks to the Collier Charitable Fund. In 2007, the Collier Charitable Fund achieved the remarkable milestone of \$50 million in grants distributed to hospitals and charities across Australia since the Fund's establishment in 1954.

**"THE POSITIVE IMPACT THE  
COLLIER SISTERS HAVE  
HAD ON MELBOURNE IS  
IMMEASURABLE; HUNDREDS  
OF CHARITIES AND  
THOUSANDS OF PEOPLE  
HAVE BEEN ASSISTED  
THANKS TO THE COLLIER  
CHARITABLE FUND."**



### **LADY MAYORESS' COMMITTEE**

The Lady Mayoress' Committee is a group of 70 dedicated women who volunteer to raise much-needed funds for women and children experiencing disadvantage in Melbourne. 2013 saw the honouring of the relationship between the Foundation and the Committee with a renewed commitment to shared philanthropic goals. Members focused on three major events, the Heart of Melbourne Ball, the Christmas Luncheon and the Flower Day High Tea. Regular social events were also used as a way to bring like-minded donors together to raise funds for charities that support women and children in Melbourne.

The Deputy Lord Mayor Cr. Susan Riley is Chair of the Committee on behalf of the Lady Mayoress and has led the Committee with energy and commitment.



### **LYN GRIGG – SUPPORTING THE ARTS THROUGH HER PHILANTHROPY**

Lyn Grigg, an active member of the Lady Mayoress' Committee, established her charitable fund account, the Guy Family Fund, with the Foundation as a meaningful way to make a difference.

Lyn says “I learnt about how simple it was to establish my own charitable fund account after I became a member of the Lady Mayoress' Committee. It's another great way to get involved with the work of the Foundation and support my chosen causes at the same time. I'm passionate about the Arts, so through my fund I've been able to give back to the Australian Ballet School. I'm proud to be a part of the Foundation through the Committee and as a philanthropist with my fund.”

Lyn is a champion of the Foundation and its work and is a great example of how women can get involved in causes that they are passionate about to make a difference in our community.



### **WENDY LEWIS – INVESTING IN TOMORROW'S LEADERS**

Girl Guides Victoria Chief Executive Officer, Wendy Lewis, set up a charitable fund account as a special gift to her organisation and future generations of young women.

Wendy, a passionate advocate of philanthropy, hopes that the Guiding Light Fund will encourage Girl Guides to realise their potential for making a positive difference.

“The aim is to develop the Girl Guides' confidence and to encourage them in their grantmaking decisions about how the funds are best allocated,” she says. “I want them to gain fundraising skills and also the ability to decide how to best use those funds in ways that benefit the community.”

Wendy sees her role as a catalyst; having established the Guiding Light Fund, she hopes that its legacy will grow through the fundraising efforts of Girl Guides and the community.

Wendy is also a valued mentor in the Foundation's Youth in Philanthropy program.

# ENGAGING IN PHILANTHROPY

## DONOR CONVERSATIONS AND COLLECTIVE GIVING PROGRAMS

Our Philanthropic Services program has been refreshed and enhanced to provide a broader range of options for donors to participate in philanthropy including a new program for Gifts in Wills and new opportunities for donors to engage with the Foundation and other donors through our Donor Conversations and Collective Giving programs.

Donor Conversations this year included a focus on *Women and Girls*, with Jan Cochrane-Harry, Dr Wendy Scaife, Jeanette Large, Wendy Lewis and Eve Mahlab AO. Our second conversation focused on *Investing in the Arts for Social Change* with Amanda Milledge, Sue Giles, Deborah Halpern, Prof Brian Caldwell and Prof Sue Nattrass AO and generously supported by UBS.

## COLLECTIVE GIVING

The Foundation is also expanding its program to include Collective Giving (Giving Circles).

## CELEBRATING PHILANTHROPY WITH OUR DONORS

Our annual charitable fund account holders event was held at Queen's Hall Parliament House in November 2012. We welcomed new charitable fund holders and recognised the ongoing support of long standing fund holders. Attended by over 140 guests, Mr David Mann OAM, kindly volunteered his services as Master of Ceremonies and guests heard a key note speech by Mr Dave Wells of Melbourne Citymission. Guests were also treated to a wonderful repertoire of songs by the children of Sacred Heart Primary School who are graduates of The Song Room Project.

It was inspiring to see so many philanthropists of all walks of life gathered together to share their common interest in giving back to their communities.



David Mann OAM hosted the end of year charitable fund holders event at Queen's Hall.



Arts for Social Change panellists Amanda Milledge, Sue Giles, Prof Brian Caldwell, Catherine Brown, Deborah Halpern and Prof Sue Nattrass AO.



# CHARITABLE FUND ACCOUNTS

Establishing a charitable fund account is a thoughtful way to support the community today while creating a legacy in perpetuity for future generations. Each charitable fund account enables donors to work in partnership with the Foundation to achieve their personal philanthropy. For the 2012/2013 financial year 15 new charitable fund accounts were established.

The following are charitable fund accounts (sub-funds) within the Foundation's Public Ancillary Fund.

A & D Richards Family Fund  
A J Brock Family Fund  
Adeline & Annie Webb Fund  
Alice Meyer von Forell Fund  
Allan Douglas (Doug) McPhee Fund  
Anderson Fund  
Andrew James Lancashire Memorial Fund  
Angela Young Charitable Fund  
Ann Rusden Fund  
Anne White Fund  
Anonymous Fund 1  
Anonymous Fund 2  
Anonymous Fund 4  
Anonymous Fund 5  
Anonymous Fund 6  
Artplay Fund  
Association of Civilian Widows Victoria Fund  
ASW Fund  
Australian Universities Classical Scholarship Fund  
AVG / Avalanche Charitable Fund  
backtome.com Giving Fund  
Barbara Leighton Fund  
Barry & Joan Medwin Family Fund  
Berkovic-Fraenkel Fund  
Bethany Wake Fund  
Borchardt Fund

Brian & Ella Talbot Family Fund  
Brown Rochford Family Fund  
Bruce Niven Fund  
Bundilla Charitable Fund  
Byrne Fund  
Caine Foundation Fund  
Caitlin Darbyshire Fund  
Capodanno Fund  
Caswell Charitable Fund  
Caterpillar Fund  
Chanelle's Heaven Cent Blessing Memorial Fund  
Cheryl and David Baer Fund  
Children's Protection Society Fund  
Chips Charitable Fund  
Chloe Alexandra Rutherford Fund  
Chris Dalwood Scholarship Fund  
Clara Sim Memorial Fund  
Connon Family Fund  
D D & S L Johnston Fund  
Daryl Leslie Zvi Rosenfield Memorial Fund  
Daryl Manley Fund  
David & Miriam Rich Family Fund  
D & H Saltzman & Family Memorial Fund for Sheryl  
Di Power Memorial Fund  
Donald & Shirley Lugg Fund  
Donald Hutchison Fund  
Doos Family Fund  
Dora & Trevor Nixon Fund  
Dorn Family Fund  
Dorothy Jean Ineke Fund  
Dorothy E Jarvis Endowment Fund in memory of the late Stanley George Jarvis and Frank Filitoe  
Duckie Charitable Fund  
Duncan Family Fund  
E Bennett Fund  
Easden Family Fund  
Education For All Fund  
Eldon and Anne Foote Trust

Ellis W Waters Fund  
Emanpea Fund  
Emerson-Sullivan Fund  
Falkinger Heritage Fund  
Family, Friends and Furry Animals Memorial Fund  
Forty Winks Charitable Fund  
Freeman Family Fund  
Friends of Rumbalara Fund  
Fund for Buddy  
Fund for Rusty  
Gary Singer and Geoffrey Smith Fund  
Geoffrey & Pauline Green Fund  
Gerald Friedlander Family Fund  
GGs Fund  
Giuliano Family Fund  
Greg Blizzard Memorial Fund  
Gringlas Family Fund  
Guiding Light Fund  
Guy Family Fund  
Harris Family Fund  
Heather Bradley Memorial Fund  
Helen & Peter Devereux Fund  
Henry & Margaret Grossbard Fund  
Henry Bucks Fund  
Hermits of El-Shaddai Charitable Fund  
Homestead Financial Group Fund  
Hope Rutherford Reilly Fund  
Hopkins Knight Family Fund  
Illingworth Family Fund  
J & N E Brown Fund  
James Cross Memorial Fund  
Jan Slaney Fund  
Jarrod Alexander Green Memorial Fund  
Jenny and Jim Gardiner Fund  
Jill Chapman Fund  
John D and Dagnija Balmford Fund  
Joshua Bendel Fund  
Judy (Gelb) Feiglin Memorial Fund  
June and Peter Stringer Fund

# CHARITABLE FUND ACCOUNTS

June O'Brien Whitling Memorial Fund

Kathleen Farrow Fund

Kathy & George Deutsch Family Fund

Kaufman Family Charitable Fund

Keith and Alison May Williams Fund

Kevin and Jacqui Clancy Family Fund

Knight Family Fund

L Semmens Fund

Lady Mayoress Committee Fund

Lawrence & Joan Cohn Fund

Left Hand Fund

Leighton Family Charitable Fund

Loftus-Hills Fund

Lord Mayor's Children's Fitness Fund

Lyons Family Fund

M & B Jenkins Fund

M J Trehwella Fund

M Recht Accessories Fund

Mac.Roberston Girls High School Fund

Malcolm Grant Brown Fund

Margaret Mitchell Fund

Mark Kenneth Thorn Charitable Fund

Marshall Fund

Marshall-Roth Charity Fund

Masky Beacon Charitable Fund

Meg and Frank Sims Fund

Melissa Ryan Princess Foundation Fund

Melvie Banks AM DSJ Fund

Mercedes-Benz Australia/Pacific  
Pty Ltd Fund

Michael Martin Fund

Miller Family Fund

Miller Foundation Fund

Minyaka Fund

Moffatt Family Fund

Motet Fund

Neil R Hambleton Fund

NJN Charitable Fund

North Bridge Fund

O'Bryan Family Charitable Fund

Oldfield Family Fund

Olga Edith Lowe Memorial Fund

One Life Sports Foundation Fund

Onemda Fund

OPA! Charitable Fund

Oxford Houses Fund

Pam Baker Fund

Patricia Cosh Fund

Paul & Ruth Permezel Fund

Payne Family Fund

Pepin Family Fund

Peter & Karen Anderson Family Fund

Possibility Australia Fund

Priestly Family Fund

P R L Charitable Fund

R C & E M Bennett Fund

Rayment Family Fund

Renshaw Fund

Richard and Gwenyth Higgs Fund

Ritchies Stores Pty Ltd Emergency  
Relief Fund

Robert Croft Fund

Rory McCaffrey Reconciliation Fund

Rotary Emergency Relief Fund

RSL Fund

Sally Graham Memorial Fund

SB08 Conference Scholarship Fund

Sawers and Sherman (K.I.A. 1916)  
Memorial Fund

Senator Tadeusz Kobylanski Fund

Senza Nome Charitable Fund

Shirley K B and David A Secomb Fund

Simon Buckley Memorial Fund

SJD Charitable Fund

Slome-Topol Family Charitable Fund

Smyth Family Fund

Society to Assist Persons of Education Fund

Strathdon Community Perpetual Fund

Supporting Angels Charitable Fund

Sweet Princess Charitable Fund



The Song Room performed for guests at Queen's Hall.

Swinburne Philanthropy Alumni (SPA) Fund

Tan Family Fund

Tattersall's Holdings Pty Ltd Fund

The Red Bowl Fund

Tom & Ruth O'Dea Fund

Tom & Zillah Diamond Fund

Tozer Family Fund

Tribute Stationery Charitable Fund

Victor & Shell Sykes Family Fund

W H Overall Fund

Walmsley Family Fund

Warburton Family Fund

Warin Chiewwej & William Holder  
Charitable Fund

Wendy Hurse Fund

Weston Street United – Masonic Fund

Wexler Family Fund

Wheelton Family Charitable Fund

White Fang Fund

Wilbow Group Fund

Wilfred & Joan Minson Fund

William Angliss Emergency Aid Fund

William A Lyon Fund

Youth Advisory Committee Fund

Zdravski Charitable Funds 1, 2, 3

# COMMUNITY FUND ACCOUNTS

**The Community Fund Accounts program assists local communities to fundraise and grant within their local municipality. The Foundation takes care of the administration and compliance associated with community fund accounts leaving community members free to focus on enabling philanthropists to get involved with their community.**

The Community Fund Accounts program now includes eight local government community fund accounts and one community foundation.

Banyule Charitable Fund  
Brimbank Foundation Fund  
Cardinia Foundation Fund  
Frankston Charitable Fund  
Hume Charitable Fund  
Kingston Charitable Fund  
Manningham Charitable Fund  
Mornington Peninsula Community Charitable Fund  
Wyndham Charitable Fund

## FOCUS ON THE KINGSTON CHARITABLE FUND

Recently the Kingston Charitable Fund was the recipient of \$100,000 from the State Government after successfully completing a matched fundraising challenge. The funding was provided by the Department of Planning and Community Development as part of the Victorian Community Foundation Initiative. By raising \$100,000 through community fundraising initiatives within the Kingston municipality, they have been able to instantly double the return from their fundraising activities, increasing their corpus to over \$800,000 which will enable a significant sum to be granted to local projects.

The Kingston Charitable Fund also received a \$100,00 matching contribution from the Foundation in 2006.

## COMMUNITY GRANT DISTRIBUTIONS

### CARDINIA FOUNDATION FUND

Echo Youth Services	\$5,000
Special Olympics Victoria	\$4,000
Hands on Learning Australia	\$4,000
Pakenham and District Hospital Incorporated	\$3,000
Emerald Centre for Hope and Outreach Incorporate	\$3,000
Outlook (Vic) Ink	\$2,500

### FRANKSTON CHARITABLE FUND

Ardoch Youth Foundation Limited	\$3,000
Life Gate Incorporated	\$1,610
Operation Larder Incorporated	\$3,000

### HUME CHARITABLE FUND

E-Qubed	\$5,000
McKenna House Broadmeadows – BHS Northern Health	\$5,000
Riding for the Disabled (Oaklands)	\$5,000
Lighthouse Foundation	\$5,000

### KINGSTON CHARITABLE FUND

Emerge Women and Children's Support Network	\$4,000
Kingston City Church Inc	\$2,000
State Schools' Relief Inc	\$2,000
Parkinsons Victoria	\$3,000
Melbourne Anglican Benevolent Society Inc	\$4,000
SOS Inc	\$800
Mind Australia	\$6,351
Dingley Village Community Advice Bureau Inc	\$2,000
Highbett Community Association Inc	\$3,000
Dragon Abreast Peninsula Dragonfly Inc	\$2,500
Bayside Dream Centre Inc	\$2,000
Castlefield Community Centre	\$2,000
Financial Counselling Vic (Inc)	\$3,500

### MANNINGHAM CHARITABLE FUND

Doncaster Community Care and Counselling Centre	\$5,000
Manningham Community Health Services Ltd	\$4,799
The Onemda Association Inc	\$5,000

Banyule Charitable Fund, Brimbank Foundation Fund, Mornington Peninsula Community Charitable Fund and Wyndham Charitable Fund have chosen to build their fund further this year to enable larger grant amounts over the coming years.





# PROACTIVE GRANTS TO INSPIRE PHILANTHROPY

## AUSTRALIAN COMMUNITY PHILANTHROPY

**Support for a Development Officer**  
**Grant: \$25,000 per year for two years**

Australian Community Philanthropy has been established to support and build the profile of community foundations. The Lord Mayor's Charitable Foundation, as the largest community foundation in Australia, is supporting Australian Community Philanthropy, in partnership with the Foundation for Rural and Regional Renewal, with funding to employ a Development Officer two days per week.

## AUSTRALIAN WOMEN DONORS NETWORK (AWDN)

**Strengthening Society by Investing in Women and Girls**  
**Grant: \$40,000 per year for two years**

AWDN seeks to support, connect and inspire effective philanthropy to create long-term social change through the advancement of women and girls. This grant will increase the existing organisational capacity of AWDN which will allow AWDN to extend and fast-track the adoption of a gender-lens program across all sectors. The Foundation is partnering with AWDN.

## FOUNDATION FOR YOUNG AUSTRALIANS

**Australian Nexus Youth Summit: Philanthropic Partner**  
**Grant: \$10,000**

Founded in 2011, Nexus is a global movement of 1000+ young people from over 60 countries working to increase and improve philanthropy and impact investing by bridging communities of wealth and social entrepreneurship. The Australian Nexus Youth Summit is being organised by the Foundation for Young Australians in Sydney from October 20th–22nd, 2013. The Foundation is a philanthropic partner for this event.

## CHAPTER SEVEN LIMITED

**Sustainability of 'The Difference'**  
**Grant: \$30,000**

Chapter Seven delivers two services. The first is a Baskin and Robbins ice cream store which operates as a social enterprise for people with disability who are long-term unemployed. This store helps fund the second program, the publishing of The Difference. There are three elements to The Difference: an annual report card on levels of social disadvantage and poverty in Australia; interviews with people who live within these indicators and due diligence and an introduction to the work being done by Melbourne's most prevention focussed and capable charities who are best positioned to address the issues profiled. This capacity building project will assist the organisation to continue to develop and grow the publication.

The Difference.



## VARIETY VICTORIA

**Mobile Comfort Station**  
**Grant: \$10,000**  
**(Matched gift of Mr Paul Wheelton)**

The mobile comfort station is transportable amenities facility and would be used for festivals and outdoor events at Councils within Melbourne such as the Maroondah Festival, St Kilda Festival, Globe to Globe, Christmas Carols and Manningham Multicultural Festival. Some of these events attract over 400,000 people.

# FUNDRAISING APPEALS



## CHRISTMAS APPEAL – FOCUSED ON REDUCING YOUTH HOMELESSNESS

The Lord Mayor's Charitable Foundation's annual Christmas appeal focused on youth homelessness and the benefit of keeping young people connected to family and school throughout their teenage years. Through the support of our donors we raised \$61,600 which has been granted to charities that support innovative youth initiatives.



Rennae Christensen of Flowers Victoria with renowned Melbourne Milliner Peter Jago.



## FLOWER DAY APPEAL

In celebration of our history we relaunched the Flower Day Appeal as part of our 90th anniversary events. First held in May, 1925, we relaunched Flower Day on 5 May 2013.

As part of the Flower Day Appeal, the Lady Mayoress' Committee held their annual High Tea at the Myer Mural Hall on 1 May with 210 guests, including The Right Honourable the Lord Mayor Robert Doyle and Lady Mayoress Emma Page Campbell. The event was sponsored by The Big Group, Alannah Hill, InterContinental Melbourne The Rialto, Flowers Vasette, Barry Plant and Flowers Victoria.

Originally the Flower Day Appeal focused on kindergartens and hospitals. This year the Foundation applied a gender lens to our grantmaking, to focus on women and girls. Corporate supporters, Henry Bucks, InterContinental Melbourne the Rialto, Bank of Melbourne and Westpac led the way with Flower Day pin sales. This was coupled with amazing support from Flowers Victoria who championed Melbourne florists to raise funds for the appeal.

The Flower Day Appeal was a resounding success raising funds in excess of \$110,000 which will be granted to programs that support women and their children experiencing homelessness.

Ms Noela Foote is Treasurer of the Lady Mayoress' Committee and supported Flower Day 2013. Noela kindly provided the historic Flower Day photo on the inside cover as it features her mother Gladys and aunts Louise and Hazel who were Flower Day volunteers in 1925.

## FUNDRAISING EVENTS

### HEART OF MELBOURNE BALL OCTOBER 2012

The Heart of Melbourne Ball was held at the Melbourne Town Hall and attended by The Right Honourable the Lord Mayor Robert Doyle and Lady Mayoress Emma Page Campbell. Themed as 'Showtime', a star-studded line-up of performers included Marina Prior and David Hobson, with Rhonda Burchmore as Master of Ceremonies. A warm thank you to the Lady Mayoress' Committee, City of Melbourne and major sponsors Spotless, Audi, InterContinental Melbourne The Rialto Westpac, Ross Estate, Wines by Design, Global Creatures, Every Cloud Productions, Showtime Attractions, Tim Lawson Enterprises, BigPrint Typo, Herald Sun, Nine Network and 3AW.

### CHRISTMAS LUNCHEON DECEMBER 2012

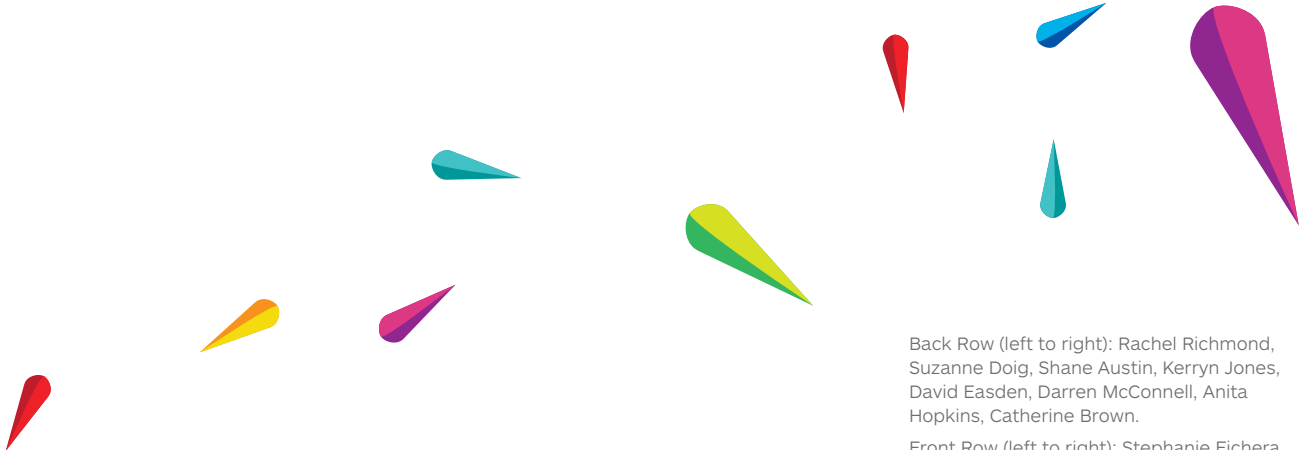
The Lady Mayoress' Committee have been supporting the Lord Mayor's Charitable Foundation since 1960. Their annual Christmas luncheon at Zinc in Federation Square was held on 12 December with over 200 guests in attendance. Peter Smith OAM graciously volunteered his time as Master of Ceremonies and attendees heard from The Right Honourable Lord Mayor Robert Doyle and the Foundation's Chief Executive Officer, Catherine Brown. Gifts for children supported by Berry Street were collected and monies raised were allocated to charities that support women and children in Melbourne.



# BEING ACCOUNTABLE







Back Row (left to right): Rachel Richmond, Suzanne Doig, Shane Austin, Kerryn Jones, David Easden, Darren McConnell, Anita Hopkins, Catherine Brown.

Front Row (left to right): Stephanie Fichera, Kim Sullivan, Sandie Baskin, Laura Redgrave, Caroline Vella, Robyn Stanton, Lyn White, Alba Granados. (Not in photo Emma Hinds.)



# FINANCE REPORT

## LORD MAYOR'S CHARITABLE FOUNDATION CONSOLIDATED GROUP

The LMCF Consolidated Group includes a number of charitable funds and more than 200 sub-funds within the Public Ancillary Fund.

### INCOME

Total income from operations represents corpus revenue and general revenue of \$65.045m, (2012: \$21.783m). Corpus revenue of \$60.698m increased by \$45.010m compared to the previous year due to major bequest distributions and other material contributions to charitable fund accounts. Corpus revenue includes \$6.485m in direct investment income for the year which represents a 14 per cent increase on this income from 2012. Included in corpus revenue is \$1.225m in realised capital gain on the sale of equity investments. The Foundation continues to be a direct self-managed investor. The charitable fund accounts increased by 11.6 per cent to the year ended 30 June 2013.

### EXPENSES

Total expenses of \$3.079m remained steady and include the delivery of the Foundation's Granting Programs, Community Initiatives, Philanthropic Services, and Finance and Administration. This financial year additional expenditure was incurred associated with the 90th Anniversary celebrations and the Foundation's relocation to new office premises at Level 15/1 Collins Street. Total expenditure includes the development and management of the Foundation's key Initiatives within each Impact Area. During the year additional resources were allocated to the Foundation Initiatives of Ageing, Affordable Housing and Youth.

### GRANTS

Grants and Initiatives are reported by Impact Area in the annual report: Ageing, Homelessness, Youth, Food Security, Arts & Heritage, Community & Preventative Health and the Environment. Total grants approved during the year were \$8.019m (2012: \$10.133m). The prior year includes final instalments of large strategic grants, and higher donor advised giving account distributions. The Foundation continues to develop long term strategic grants with future impact and has contingent granting liabilities for future financial periods of \$2.378m.

### EQUITY

The Foundation's total equity of \$163.887m has increased significantly from last year (2012: \$99.102m) – a \$64.785m increase. Of this increase, \$53.322m is transfers of corpus revenue to corpus capital, which includes realised capital gains and generous contributions from bequests. The Foundation's total equity comprises three charitable funds: Board of Management of the Lord Mayor's Charitable Fund – Charitable Fund 1; Lord Mayor's Charitable Fund (the Foundation) – DGR Public Ancillary Fund; and The Eldon and Anne Foote Trust – Charitable Fund 2.

### PROFESSIONAL ADVISORS

*External Auditors:*  
Deloitte Touche Tohmatsu

*Internal Auditors:*  
Grant Thornton

*Accounting:*  
RSM Bird Cameron

*Banks:*  
Westpac Banking Corporation  
National Australia Bank

*Investment Advisors:*  
Mr Tim James (UBS)  
Ms Amy Lawrance (UBS)  
Mr David Liddle (JB Were)  
Mr Graham Craig (Wilson HTM)

*Fixed Interest Broker:*  
Tony Scott (Secure Investments  
FIB Pty Ltd)

*Legal:*  
Gadens Lawyers

# MEMBERS OF THE BOARD REPORT

30 JUNE 2013

The members of the Board of Management of the Lord Mayor's Charitable Fund (the "Board") present their report, together with the financial statements, on the Lord Mayor's Charitable Foundation Consolidated Group (the "LMCF Consolidated Group") for the financial year ended 30 June 2013.

The Lord Mayor's Charitable Foundation Consolidated Group financial report represents the combined annual financial results of the following individual entities:

- The Board of Management of the Lord Mayor's Charitable Fund – ABN 48 042 414 556
- The Lord Mayor's Charitable Fund (the Foundation) – ABN 63 635 798 473
- The Eldon and Anne Foote Trust – ABN 38 330 915 392

The Board acts as trustee of the Lord Mayor's Charitable Foundation and The Eldon and Anne Foote Trust.

The LMCF Consolidated Group Financial Report is a "special purpose financial report" which combines the annual audited financial reports of the above named entities. The LMCF Consolidated Group Financial Report does not form a separate economic entity for accounting purposes.

## MEMBERS OF THE BOARD OF MANAGEMENT

The following persons were members of the individual entities within the LMCF Consolidated Group during the whole of the financial year and up to the date of this report, unless otherwise stated:

Rt Hon the Lord Mayor Robert Doyle  
(President)

Mr Robert Masters  
(Chairman)

Mr Daniel Leighton  
(Deputy Chairman)

Mr Andrew Baxter  
Ms Jay Bonnington

Ms Jan Cochrane-Harry

Mr Anthony Connon

Mr Jon Edwards

Mr Bernie Geary OAM  
(to October 2012)

Hon Phil Honeywood  
(to October 2012)

Mr Allan Kaufman  
(to December 2012)

Ms Amanda Milledge

Mr Peter Snaddon

Dr George Tippet AM KSJ FAMA

Ms Andrea Waters

Ms Lydia Wilson

Mr Mike Zafiropoulos AM, JP

## PRINCIPAL ACTIVITIES AND ANY SIGNIFICANT CHANGES TO THOSE ACTIVITIES DURING THE YEAR

The LMCF Consolidated Group is combined of three not-for-profit entities being the Board of Management of the Lord Mayor's Charitable Fund, the Lord Mayor's Charitable Foundation and The Eldon and Anne Foote Trust. The principal activities of the individual entities which make up the LMCF Consolidated Group comprise:

- Providing grants to charitable organisations to increase life opportunities and improve social inclusion including in the areas of homelessness, ageing, youth, health, disability, environment, the arts and education;
- Providing opportunities and support for private and corporate citizens to participate in philanthropy through donations, sponsorship, charitable fund accounts and bequests;
- Researching and stimulating awareness of relevant community needs and of philanthropy; and
- The Board of Management of the Lord Mayor's Charitable Fund acts as a trustee.



# MEMBERS OF THE BOARD REPORT

30 JUNE 2013

The Financial Report represents a consolidated financial summary of annual audited financial reports of the Board of Management of the Lord Mayor's Charitable Fund, the Lord Mayor's Charitable Fund (the Foundation) and The Eldon and Anne Foote Trust.

Investment income attributed to charitable fund balances is made available for charitable distribution after taking into consideration the requirements of the Federal Treasury Public Ancillary Fund Guidelines (2011), capital preservation requirements and stipulated management fees.

There were no significant changes to the principal activities during the year.

## REVIEW OF OPERATIONS AND RESULTS

The surplus available for distribution was \$7,921,697 (2012: \$9,379,542). This decrease on prior year is attributable to a greater proportion of corpus revenue being transferred to capital reserves. The current year surplus together with a transfer from general bequest funds carried forward were applied to charitable fund distributions of \$8,019,138 (2012: \$10,133,165).

## SIGNIFICANT CHANGES TO THE STATE OF AFFAIRS

There were no significant changes to the state of affairs of the entities within the LMCF Consolidated Group during the course of the financial year.

## SUBSEQUENT EVENTS

Since the end of the financial year, there were no subsequent events affecting the operation, results of operations or the state of affairs of the individual entities within the LMCF Consolidated Group.

## LIKELY DEVELOPMENTS

The LMCF Consolidated Group is a beneficiary of one significant distribution that is to be received in the next financial year ended 30 June 2014. The exact amount to be received is not yet known.

There are no other likely developments to impact the financial results of the entities within the LMCF Consolidated Group during the financial year ended 30 June 2014.

## ENVIRONMENTAL REGULATIONS

The entities within the LMCF Consolidated Group are not subject to any significant environmental laws or regulations.

## INDEMNIFICATION OF MEMBERS OF THE BOARD

Directors and Officers insurance is held by all entities within the LMCF Consolidated Group.

## BOARD MEETINGS

The following table sets out the number of Board meetings (including meetings of the Executive Committee) during the financial year and the number of meetings attended by each member within the LMCF Consolidated Group. During the financial year ended 30 June 2013, there were: six Board meetings, five Executive meetings, three Governance Sub-Committee meetings, three Audit and Risk Sub-Committee meetings, eleven Investment Sub-Committee meetings, two Social Needs Sub-Committee meetings and two Fundraising and Marketing Sub-Committee meetings. The Lord Mayor is President of the Foundation and receives Board papers and attends meetings and functions as his schedule and other duties permit.




	BOARD MEETING		EXECUTIVE COMMITTEE		GOVERNANCE SUB-COMMITTEE		AUDIT & RISK SUB-COMMITTEE	
	Eligible to attend	Attended	Eligible to attend	Attended	Eligible to attend	Attended	Eligible to attend	Attended
<b>Mr Robert Masters (Chairman)</b>	6	6	5	5	–	–	–	–
<b>Mr Daniel Leighton (Deputy Chairman)</b>	6	4	5	3	–	–	3	3
<b>Mr Andrew Baxter</b>	6	3	–	–	–	–	–	–
<b>Ms Jay Bonnington</b>	6	5	3	1	1	–	3	3
<b>Ms Jan Cochrane-Harry</b>	6	5	–	–	1	1	–	–
<b>Mr Anthony Connon</b>	6	4	5	4	–	–	–	–
<b>Mr Jon Edwards</b>	6	5	–	–	3	3	–	–
<b>Mr Bernie Geary OAM</b>	2	–	–	–	–	–	–	–
<b>Hon Phil Honeywood</b>	2	1	2	1	1	–	–	–
<b>Mr Allan Kaufman</b>	2	2	–	–	–	–	–	–
<b>Ms Amanda Milledge</b>	6	5	–	–	–	–	–	–
<b>Mr Peter Snaddon</b>	6	4	5	3	3	2	–	–
<b>Dr George Tippet AM KSJ FAMA</b>	6	6	–	–	–	–	–	–
<b>Ms Andrea Waters</b>	6	6	2	2	3	3	3	3
<b>Ms Lydia Wilson</b>	6	6	–	–	2	1	–	–
<b>Mr Mike Zafiropoulos AM, JP</b>	6	5	5	5	3	3	–	–

## GOVERNANCE PROCEDURES

The Governance procedures within the LMCF Consolidated Group include the following elements:

- The Board is required to meet at least every three months (section 15(1) of the LMCF Act) and met six times during the financial year;
- The Board has established the following Committees to assist in the good governance of the Foundation: Audit & Risk Sub-Committee, Fundraising and Marketing Sub-Committee, Investment Sub-Committee, Social Needs Sub-Committee (and Grants Advisory Panels) and the Governance Sub-Committee. Sub-Committee Charters are reviewed annually;
- The Executive Committee is established under section 18(1) of the Act, meets as required and met five times during the financial year;
- The Investment policy is reviewed annually;
- The Board undertakes an annual performance review;
- An internal audit program is in place and five reviews have been undertaken during the financial year;
- An annual report including summary audited financial statements and an activity report is produced, presented at the Annual General Meeting and made available to the public; and
- This financial year the Board will report to the Australian Charities and Not-for-Profit Commission.

  
 Rt Hon the Lord Mayor Robert Doyle  
 President of the Board  
 Date 27/09/13  
 Melbourne

  
 Robert Masters  
 Chairman of the Board  
 Date 27/09/2013  
 Melbourne

# STATEMENT OF PROFIT OR LOSS AND OTHER COMPREHENSIVE INCOME

FOR THE FINANCIAL YEAR ENDED 30 JUNE 2013

	2013 \$	2012 \$
<b>INCOME FROM CONTINUING OPERATIONS</b>		
General revenue	4,347,421	6,095,128
Corpus revenue	60,697,647	15,687,617
<b>Total income from continuing operations</b>	<b>65,045,068</b>	<b>21,782,745</b>
<b>EXPENSES FROM CONTINUING OPERATIONS</b>		
Employee benefits	1,583,322	1,383,990
Fundraising and promotional expenses	554,539	830,701
Depreciation and amortisation	43,292	57,955
Other operating expenses	897,672	792,953
<b>Total expenses from continuing operations</b>	<b>3,078,825</b>	<b>3,065,599</b>
<b>SURPLUS FOR THE FINANCIAL YEAR BEFORE IMPAIRMENT</b>	<b>61,966,243</b>	<b>18,717,146</b>
Impairment of other financial assets	(722,226)	(3,079,488)
<b>SURPLUS BEFORE TRANSFERS (TO)/FROM CORPUS</b>	<b>61,244,017</b>	<b>15,637,658</b>
Transfers (to)/from Corpus	(53,322,320)	(6,258,116)
<b>SURPLUS FOR DISTRIBUTION FOR THE FINANCIAL YEAR</b>	<b>7,921,697</b>	<b>9,379,542</b>
<b>OTHER COMPREHENSIVE INCOME FROM CONTINUING OPERATIONS</b>		
<b>Items that may be reclassified subsequently to profit or loss:</b>		
Unrealised gain/(loss) on other financial assets	11,391,928	(5,441,575)
Transfer of impairment of other financial assets	722,226	3,079,488
Transfer (to)/from Corpus	53,322,320	6,258,116
<b>OTHER COMPREHENSIVE INCOME</b>	<b>65,436,474</b>	<b>3,926,029</b>
<b>TOTAL COMPREHENSIVE INCOME FOR THE FINANCIAL YEAR</b>	<b>73,358,171</b>	<b>13,275,742</b>



# STATEMENT OF FINANCIAL POSITION

AS AT 30 JUNE 2013

	2013 \$	2012 \$
<b>CURRENT ASSETS</b>		
Cash and cash equivalents	24,987,849	9,768,787
Receivables	2,669,922	2,361,545
Other financial assets	14,647,785	12,000,000
<b>Total current assets</b>	<b>42,305,556</b>	<b>24,130,332</b>
<b>NON-CURRENT ASSETS</b>		
Other financial assets	125,167,720	77,686,154
Plant and equipment	123,465	120,485
<b>Total Non-current assets</b>	<b>125,291,185</b>	<b>77,806,639</b>
<b>Total assets</b>	<b>167,596,741</b>	<b>101,936,971</b>
<b>CURRENT LIABILITIES</b>		
Payables	265,320	205,053
Grants authorised for distribution	2,882,018	1,992,274
Employee benefits	82,254	56,000
<b>Total current liabilities</b>	<b>3,229,592</b>	<b>2,253,327</b>
<b>NON-CURRENT LIABILITIES</b>		
Grants authorised for distribution	429,246	542,000
Employee benefits	51,000	40,000
<b>Total Non-current liabilities</b>	<b>480,246</b>	<b>582,000</b>
<b>Total liabilities</b>	<b>3,709,838</b>	<b>2,835,327</b>
<b>NET ASSETS</b>	<b>163,886,903</b>	<b>99,101,644</b>
<b>EQUITY</b>		
Corpus and general bequest funds	145,064,688	91,742,368
Asset revaluation reserve	15,911,036	4,350,656
Funds to be distributed	2,911,179	3,008,620
<b>TOTAL EQUITY</b>	<b>163,886,903</b>	<b>99,101,644</b>


# DECLARATION BY MEMBERS OF THE BOARD

FOR THE FINANCIAL YEAR ENDED 30 JUNE 2013

In the opinion of the members of the Board the statement of profit or loss and other comprehensive income, statement of financial position, statement of changes in equity, statement of cash flows and notes to and forming part of the financial statements, presents fairly the results of the LMCF Consolidated Group's operations for the year ended 30 June 2013 and its state of affairs as at that date, in accordance with a resolution of the Board.

At the date of signing this financial report, we are not aware of any circumstance that would render any particulars included in the financial report to be misleading or inaccurate. There are reasonable grounds to believe that the LMCF Consolidated Group will be able to pay its debts as and when they became due and payable.

This declaration is made in accordance with a resolution of the members of the Board of Management of the Lord Mayor's Charitable Fund.

  
Rt Hon the Lord Mayor Robert Doyle  
President of the Board  
Date 27/09/13  
Melbourne

  
Robert Masters  
Chairman of the Board  
Date 27/09/2013  
Melbourne

# BOARD OF MANAGEMENT PROFILES 2013



George Tippet AM KSJ, FAMA, Mike Zafiropoulos AM, JP, Amanda Milledge, Daniel Leighton (Deputy Chairman), Lord Mayor Robert Doyle (President), Peter Snaddon, Andrea Waters, Andrew Baxter, Robert Masters (Chairman), Anthony Connon, Jay Bonnington, Jan Cochrane-Harry, Lydia Wilson, Jon Edwards.

## **THE RT HON. THE LORD MAYOR OF MELBOURNE, COUNCILLOR ROBERT DOYLE**

**President: December 2008  
Appointed: 2008**

Robert Doyle was elected Lord Mayor in 2008. He is a Principal at The Nous Group, a management consultancy business based in Melbourne and since 2007 has been Chairman of Melbourne Health (The Royal Melbourne Hospital). In 2010, he was made a Fellow of Monash University.

Robert is Chairman of the Royal Melbourne Hospital Foundation and a Trustee of the Shrine of Remembrance. A State Member of Parliament for 14 years, Robert was Leader of the Opposition and Leader of the Liberal Party for four years.

## **MR ROBERT MASTERS, FPRIA**

**Chairman: December 2010  
Appointed: 2005**

Chairman, Executive Committee, Chair Fundraising and Marketing Sub-Committee

The Principal of Robert Masters and Associates, Robert has more than 30 years' experience in strategic communication across the public and private sectors, and more than 13 years as a senior political journalist. He is a Fellow and a past President of the Public Relations Institute of Australia. He is an advisor to the Alannah and Madeline Foundation, the National Centre Against Bullying and a Board member of the Tee-up for Kids Foundation and InterCapital Group.

## **MR DANIEL LEIGHTON, BAPPSCI(HONS)**

**Deputy Chairman: December 2010  
Appointed: 2008**

Chair Social Needs Sub-Committee, Member Executive Committee, and Audit and Risk Sub-Committee

Daniel is the CEO of Inclusion Melbourne, a progressive disability support provider which promotes people coming together to create better lives. He currently serves on the Victorian Committee of National Disability Services, the peak industry body and has been appointed to advise the Commonwealth Government on the design of the National Disability Insurance Scheme. He has previously held a range of operational, policy and research roles in government and the not-for-profit sector.



# BOARD OF MANAGEMENT PROFILES 2013

## **MR ANDREW BAXTER, BBUS(MKTC), AMAMI, CAICD**

**Appointed: 2011**

Member Fundraising and Marketing Sub-Committee

Andrew is the CEO of Ogilvy Australia, the biggest communications agency in the country. He has worked with many of Australia's largest companies and brands. Andrew is a Director of a number of companies within the publicly listed STW Group. Andrew is also the Chairman of The Song Room, Chairman of the Melbourne Aces, and sits on the Board of the Communications Council.

## **MS JAY BONNINGTON, BCOM, MBA, FCPA, FAICD**

**Appointed: 2008**

Member Investment, and Audit and Risk Sub-Committees

Jay is a qualified chartered accountant who held senior financial roles both internationally and in Australia. Jay has been a professional full-time director since 2005 on a portfolio of boards. Jay is currently a director on St. John of God Healthcare National Board, HESTA Superannuation Fund, UTA Infrastructure, Metropolitan Fire Brigade, Chair of Salvation Army Audit Committee (Southern Territory), Trustee of The Queen's Fund and a Member of Deakin University Council.

## **MS JAN COCHRANE-HARRY**

**Appointed: 2008**

Member Investment, and Fundraising and Marketing Sub-Committees

Jan is a Management Consultant and Non-Executive Director / Trustee of three Non-profit organisations and one commercial company. She has more than 25 years' senior management experience in a range of sectors including philanthropy, education, public housing, community development, arts facility management and corporate-community dispute resolution.

## **MR ANTHONY CONNOR, BA (OXON), FCA, FAICD**

**Appointed: 2006**

Chair Investment Sub-Committee, Member Executive Committee

The CFO of Australian Unity Limited since 1995, Anthony has more than 30 years' experience in senior finance and administrative roles with various major financial organisations. Anthony is also a Non-Executive Director of Calliden Group Ltd. Anthony is a former chairman of the Lord Mayor's Charitable Foundation.

## **MR JON EDWARDS**

**Appointed: 2011**

Member Governance and Social Needs Sub-Committees

Jon was formerly CEO of Frankston City Council, and State and National President of Local Government Managers Australia, a peak professional association which awarded him its Certificate of Merit for Services to Local Government. Jon is a Life Governor of the Peter James Centre.

## **MR BERNIE GEARY OAM**

**Appointed: 2010**

**Retired: October 2012**

Victoria's inaugural Child Safety Commissioner, Bernie is widely known and respected for his 30-plus years of working with vulnerable children, young people and their families. This includes being Victoria's first outreach youth worker and serving on the Victorian Youth Parole Board for 17 years.

## **THE HON. PHIL HONEYWOOD, BA(HONS)**

**Appointed: 2010**

**Retired: October 2012**

Member Executive Committee, Governance Sub-Committee

Phil's key interests are education, multicultural affairs and philanthropy. He was a State Member of Parliament for 18 years and served as Minister for Tertiary Education and Training, Minister for Multicultural Affairs and Deputy Leader of the State Opposition. Phil serves on not-for-profit boards and philanthropic organisations.

## **MR ALLAN KAUFMAN**

**Appointed: 2006**

**Retired: December 2012**

Member Fundraising and Marketing Sub-Committee

Allan is a Director of Australia's leading culturally and linguistically diverse media representation company, Leba Ethnic Media, and has actively contributed to the industry for over 20 years. He is also the Treasurer on the Sholem Aleichem College Council.

**MS AMANDA MILLEDGE****Appointed: 2011**

Member Social Needs Sub-Committee

Amanda has a background as a commercial lawyer and Pro Bono and Community Program Co-ordinator at Mallesons Stephen Jaques. Now working in the not-for-profit sector, Amanda is a Director of Anex, Australian Prostate Cancer Research and a trustee of the Collier Charitable Fund. She is also an accredited broker under the Partnership Brokers' Accreditation Scheme.

**MR PETER SNADDON, LLB****Appointed: 2006**

Member Executive Committee, and Investment and Governance Sub-Committees

Peter is a consultant and former Senior Partner at Gadens Lawyers Melbourne. He has extensive experience in the acquisition, development, construction, financing and leasing of major property projects. He has taken the lead role in many landmark developments in Melbourne, including Collins Place, Melbourne Magistrates' Court and Telstra Dome.

**DR GEORGE TIPPETT AM KSJ, FAMA****Appointed: 2003**

Member Social Needs Sub-Committee

George has undertaken many international humanitarian projects that combine primary care with school education programs involving parents. He is on the councils of the Australian Medical Association, the Medical Benevolent Association and the Victorian Doctors' Health Program.

**MS ANDREA WATERS, FCA, CAICD****Appointed: 2008**

Chair Audit and Risk Sub-Committee, Chair Governance Sub-Committee and Member Executive Committee

Andrea is a professional Non-Executive Director and Chartered Accountant. She retired as an Audit Partner with KPMG in 2012 and has more than 28 years' experience auditing financial services companies and not-for-profit organisations. She is also a Director of the Institute of Chartered Accountants in Australia and Citywide Service Solutions and has previously been a board member of Cancer Council Victoria.

**MS LYDIA WILSON, BARTS, BSOCWORK, FAICD, FAIM, FLCPRO****Appointed 2008**

Member Social Needs Sub-Committee

Lydia is an executive leadership consultant following a 22 year executive career in Local Government. She held the positions of CEO at Manningham City Council, Yarra City Council and Macedon Ranges Shire Council. She is also a current Director of Procurement Australia and of Fronditha Care.

**MR MIKE ZAFIROPOULOS AM, JP, BAPPSCI, DIPCOMPSCI, CERT. TV PRODUCTION****Appointed: 2003**

Member Executive Committee, Governance and Social Needs Sub-Committees

Mike's commitment to community service spans more than 40 years. A former Mayor of Fitzroy, he was Director of the Department of Immigration and recently retired as General Manager of SBS in Melbourne. His past membership of boards includes the Royal Victorian Eye and Ear Hospital, Regional Arts Victoria and the Melbourne Community Foundation. He is an Australia Day Life Ambassador and currently serves as Chairman of Channel 31 and Fronditha Care.

**STAFF (AS AT 30 JUNE 2013)****CHIEF EXECUTIVE OFFICER**Catherine Brown LLB, BA GradDip BusAdmin, FAICD  
**Chief Executive Officer****COMMUNICATIONS**

Lyn White

**Board Secretary**Suzanne Doig  
BA (ManComm), PRIA  
**Communications Manager**Stephanie Fichera  
BA, DipL(Melb), MPRIA  
**Communications Officer****BUSINESS SERVICES**David Easden  
BBus (Mkt), CPA, SA Fin  
**Director**Darren McConnell, BBus(Acc) CPA  
**Chief Financial Officer**Caroline Vella  
**Finance Co-ordinator**Robyn Stanton  
**Reception and Administration Officer**Emma Hinds  
**Reception****PHILANTHROPIC SERVICES**Laura Redgrave  
MBA, AIMM, MIPAA  
**Director**Sandie Baskin MFIA  
**Charitable Funds Manager**Lavinia Podolak  
**Philanthropic Services Manager**Rachel Richmond  
**Donor Services Officer****GRANTS AND YOUTH INITIATIVES**Anita Hopkins  
MBA, GradDipPubPol,  
GradCertSocSc (Philanthropy)  
**Director**Kim Sullivan MComm  
(Media and Communication)  
**Grants Program Manager**Kerryn Jones  
**Grants Program Manager (Operations)****RESEARCH, HOMELESSNESS AND AGEING INITIATIVES**Shane Austin  
MBusLaw, MFIA, MTASA  
**Director**Alba Granados  
MDiet, GradDipHNutr,  
BBiomedSci (Honours)  
**Research Officer**

# OUR PARTNERS IN PHILANTHROPY



The InterContinental Melbourne The Rialto supported Flower Day 2013.

The Lord Mayor's Charitable Foundation is generously sponsored and supported by many wonderful organisations and individuals who work with us to achieve our vision of inspiring philanthropy.

Thank you for your continued support.

## THANK YOU

### FEED MELBOURNE 2012 AND 2013

Leader Community Newspapers  
FareShare

### 90TH ANNIVERSARY DINNER

Office of the Lord Mayor  
Epicure  
Harry the Hirer

### 90TH ANNIVERSARY 'INSPIRING PHILANTHROPY' DVD

Designworks  
Youthworx

### 90TH ANNIVERSARY IN OUR COMMUNITY GRANTS PROGRAM

Leader Newspapers  
Butterfly Internet

### DONOR CONVERSATIONS

Investing in the Arts for Social Change – UBS

### PROPERTY ADVICE

John Forsyth, Simpson Forsyth  
Jim Milledge and Ben Nicholas, Bates Smart Architects

### MARKETING ADVISORS

David Mann OAM, 3AW  
Michelle Stamper, Nine Network

## BRAND DEVELOPMENT

Designworks

### HEART OF MELBOURNE BALL OCTOBER 2012

Lady Mayoress' Committee  
Office of the Lord Mayor  
City of Melbourne  
Audi  
Westpac  
Cadbury  
InterContinental Melbourne The Rialto  
Spotless  
Ross Estate  
Wines by Design  
Network Nine  
3AW  
Herald Sun  
Australian Unity  
BigPrint  
Myer  
Showtime Attractions  
JB Were  
Wilson HTM Investment Group  
UBS  
Secure Investments  
Gadens Lawyers  
David Johnston OAM  
Tim Lawson Enterprise  
Global Creatures  
Victoria St John Design  
Christine  
Every Cloud Productions  
Magnormos  
Australian Academy of Design  
Victorian College of the Arts

## FLOWER DAY 2013

Alannah Hill Chadstone  
Alannah Hill Doncaster  
Alannah Hill Howey Place  
Alannah Hill Melbourne Central  
Alitalia Florist  
An Experience Beauty Clinic  
Art Stems On Lygon  
Bank Of Melbourne, CBD Branches  
Barry Plant Real Estate  
Belmore Flowers  
The Big Group  
Bountiful Garden  
Celsius Design  
City Of Melbourne  
Civic Magazines  
Epicure  
Flowers Round The Hours  
Flowers Vasette  
Forecast Hairdressing  
Gadens Lawyers  
Henry Bucks  
Hynesite Photography  
InterContinental Melbourne The Rialto  
Law Institute Of Victoria  
Le Petit Gauteau  
Ludos  
Mitcham Central Flowers  
Myer Flower Boutique  
Pacific Magazines/Channel 7  
Mr Fresh  
Queen St Flower Co  
Scent Of A Flower  
Terrace Gardens  
Westpac

**Design:** Celsius Design

**Photography:** Daniel Mendelbaum



# THE LORD M

## Metropolitan Hosp

INAUGURATED 1923 . .



Offices of the Fund

### Over £875,000 raised and administered

The Fund distributes its money among a  
There are 19 MEDICAL Charities and  
No deductions are made from earmarked  
paid on moneys received.  
The Fund is under a continuous audit.

***Ask for Brochure relating to  
of the Lord Mayor  
Copies posted***

**Send your charitable contribution  
at the Town Hall**



**It will be Gratefully Received**

Chairman and Treasurer:

**Cr. A. G. WALES, Lord Mayor of Melbourne**

**WE CONNECT PEOPLE  
THROUGH PHILANTHROPY.  
WE INSPIRE GIVING BY  
EXPLORING NEW IDEAS,  
CONNECTING PEOPLE  
WHO ARE ABLE TO GIVE  
WITH THOSE WHO CAN  
MAKE A DIFFERENCE,  
AND BY ENGAGING  
IN THOUGHTFUL AND  
PROACTIVE GRANTMAKING.**



# THE LORD MAYOR'S FUND

for

## Metropolitan Hospitals and Charities

INAUGURATED 1923 . . . INCORPORATED 1930



Offices of the Fund.

**Over £875,000 raised and administered at a cost of less than 5 per cent.**

The Fund distributes its money among all Hospitals and Charities in Melbourne. There are 19 MEDICAL Charities and 109 GENERAL Charities.

No deductions are made from earmarked contributions, and no commissions are paid on moneys received.

The Fund is under a continuous audit.

***Ask for Brochure relating to the Endowment Provisions  
of the Lord Mayor's Fund Act 1930.***

***Copies posted on request.***

**Send your charitable contribution to The Lord Mayor's Fund  
at the Town Hall, Melbourne**

It will be Gratefully Received and Wisely Distributed.

Chairman and Treasurer:

Cr. A. G. WALES, Lord Mayor of Melbourne.

Secretary:

E. GLANVILLE HICKS, F.C.I.S.

### SPOTLIGHT ON PHILANTHROPY

The Lord Mayor's Charitable Foundation has always been supported by the media in Melbourne. In our early years newspapers donated advertising space to support our fundraising appeals and provided editorial coverage for special events.

Later radio and television also provided coverage of our fundraising appeals and special events assisting the Foundation to not only raise funds but alert Melburnians to social issues of the day.

Throughout our history we have received support from all of Melbourne's newspapers, including the Herald Sun, a generous long term donor to the Foundation. More recently we have received extensive coverage from Leader Community Newspapers in support of the Feed Melbourne campaign and our 90th Anniversary In Our Community Grants Program. Radio 3AW and Nine Network have also provided support for our special events.

Left: In 1935 the Lord Mayor's Fund for Metropolitan Hospitals and Charities placed this advertisement as a full page advertisement in many of Melbourne's publications.



## IMPACT AREAS

HOMELESSNESS

YOUTH

AGEING

FOOD SECURITY

ARTS AND HERITAGE

ENVIRONMENT

COMMUNITY AND  
PREVENTATIVE HEALTH

## AUDITORS

*External Auditors:*  
Deloitte Touche Tohmatsu

*Internal Auditors:*  
Grant Thornton

## LORD MAYOR'S CHARITABLE FOUNDATION

*Lord Mayor's Charitable Fund Act 1996 (Victoria).*

Level 15, 1 Collins Street, Melbourne 3000  
PO Box 1851 Melbourne 3001  
(03) 9633 0033  
info@lmcf.org.au

Lord Mayor's Charitable Fund 63 635 798 473  
Board of Management of Lord Mayor's Charitable Fund 48 042 414 556

**lmcf.org.au**

