

# CONNECT



In this edition of *Connect*, read about our Seed Innovation Grants and the innovative projects to support positive social change.

- 4** Strategic Initiatives 2021
- 6** Seed Innovation Grants 2021
- 11** Donor Spotlight: Honouring Heather



## New Knowledge Hub Launched

**We recently launched our new Knowledge Hub and grants search function on our website.**

You'll find news articles, blogs, podcasts, research reports, and stories with impact from our grant partners and inspiring stories about our donors.

Explore our impact further by searching our new grants database. You can search by impact area, financial year, grant type and Sustainable Development Goals (SGDs).

We aim to support our grantmaking and initiatives by having a strong knowledge base. We want to share and learn with our grant partners and collaborators. We want to help build an informed donor group, passionate about making Greater Melbourne a sustainable and equitable city and engaged in thoughtful giving.

**Take a tour of our Knowledge Hub**

[lmc.org.au/knowledge-hub](https://lmc.org.au/knowledge-hub)

## GRANTS

# Families Supportive Housing

**Safe and Secure Housing for Women and Children**

**Launch Housing has started building its innovative new housing service and accommodation for women and children who have been affected by family violence.**

Lord Mayor's Charitable Foundation approved a grant of \$500,000, which was the first philanthropic support for the project. As the project was fine tuned and additional supporters came on board, a funding gap was identified. The Foundation was pleased to provide an additional \$400,000 to help make the vision a reality.

Once completed, the housing will provide high quality self-contained apartments that are safe and secure, provide a sense of community and meet high-level environmental standards. The women will also be helped through the co-location of support services within the development. This is a first for Australia and will help demonstrate a model which could be replicated in other communities.

Located in Dandenong, it will be one of Australia's first supportive housing initiatives for families. It aims to provide long-term affordable housing for women



Launch Housing, Artists impression of the new Supportive Housing for Families development in Dandenong.

who have experienced family violence and homelessness with priority given to women with young children aged 0-12 years.

There will also be some accommodation available for older women.

The development will include 60 well-designed apartments in a medium-high rise building with a mix of studio and two to four-bedroom apartments. Residents will have access to educational and cultural activities as well as communal spaces, courtyards and community gardens.

The Foundation's Program Manager for Homelessness & Affordable Housing Erin Dolan said that this new housing development meets the Foundation's priority of preventing homelessness, increasing the supply of affordable housing, and testing innovative solutions to tough social problems.

"Women and their children will be part of a supportive community where everyone is safely and securely housed with access to the services they require to build healthy and happy lives."



**Phone**  
(03) 9633 0033

**Mail**  
GPO Box 1851,  
Melbourne 3001

**Address**  
Level 15,  
1 Collins Street,  
Melbourne 3000

**Email**  
[info@lmc.org.au](mailto:info@lmc.org.au)

**Visit our website**  
[lmc.org.au](https://lmc.org.au)

**Subscribe to e-Connect**  
[lmc.org.au/subscribe](https://lmc.org.au/subscribe)

**Read our blog**  
[lmc.org.au/blog](https://lmc.org.au/blog)

**Make a donation**  
(03) 9633 0033 or  
[lmc.org.au/donate](https://lmc.org.au/donate)

**Listen to our podcast**  
[lmc.org.au/podcast](https://lmc.org.au/podcast)

**Find us on Facebook**  
[/lordmayorscharitablefoundation](https://www.facebook.com/lordmayorscharitablefoundation)

**Find us on YouTube**  
[/lmcfvideo](https://www.youtube.com/lmcfvideo)

**Follow us on Twitter**  
[@MelbourneLMCF](https://twitter.com/MelbourneLMCF)

**Cover**  
Yarra River, Melbourne.



# Working towards a more sustainable and equitable world

**A combination of knowledge and action can lead to meaningful change**

**Social and environmental challenges are complex and often large scale. At Lord Mayor's Charitable Foundation, we understand that to make a major impact, we must understand these challenges at some depth and work collaboratively and creatively to test and scale solutions.**



Regen Melbourne.

We understand that to progress positive social change, we must fund the gathering and sharing of knowledge, and the testing of new solutions to community issues through pilot projects.

We also sometimes fund the backbone support for collaborations and supporting the voices of vulnerable communities. This combination of knowledge and action can lead to meaningful change, through either changes in policy or through attracting other funding and financing to scale-up demonstrated solutions.

Launch Housing's Families Supportive Housing in Dandenong is an example of this in action (see page 2). The Foundation was the first philanthropic funder of this project providing two grants totalling \$900,000.

This edition of *Connect* includes projects demonstrating all of these approaches to positive social change. The Seed Innovation Grants include some early stage projects that have potential to scale if they are successful (see page 6).

The Foundation is committed to funding innovative pilot and demonstration projects. We can derisk successful projects so that funders from other sectors can help scale solutions. This grows impact. As we look towards the future, we are all thinking about the world we want post the COVID-19 pandemic. Many of us want a more sustainable and equitable world. Much of our work with vulnerable communities addressing energy poverty and reducing the impact of heatwaves stems from this vision.

The opportunity to work on Regen Melbourne with Small Giants Academy and City of Melbourne through the 'doughnut economics' lens has been nothing less than inspiring. The Community Insights report was launched by Dr Kate Raworth recently and we are looking forward to working on the next steps. This includes placed based demonstration projects developing ideas about community resilience and sustainability.

As we recover from the pandemic, we are keeping a close eye on the economic and housing impacts on young people and women (especially older and younger women).

We have developed an inspiring set of Initiatives for 2021/22 and our updated Strategic Plan focuses on two major themes: addressing the climate challenge and building back better in the COVID-19 recovery.

The Foundation is making a renewed effort to engage more Melburnians in structured giving. Giving with and through the Foundation is enjoyable and efficient.

The most inspiring messages about giving come from current donors who are leading by example. Wendy Lewis OAM along with John Bradley, and Angela Wheelton OAM DSJ and Paul Wheelton AM KSJ are all fabulous examples of thoughtful philanthropy and are great friends to the Foundation. We look forward to welcoming new donor friends this year.

Let's support each other as we respond to the COVID-19 pandemic. We are a strong and caring community.

Dr Catherine Brown OAM  
Chief Executive Officer



# Strategic Initiatives 2021

Strategic community giving since 1923

## Two overarching themes sit above our Strategic Initiatives in 2021/22:

### Building Back Better

Leverage and grow our initiatives and partnerships that contribute to the COVID-19 recovery.

### Addressing the Climate Challenge

Strengthen our response to the climate challenge.

## Impact Initiatives 2021/22

Each year, the Foundation leads a small number of collaborative initiatives tackling the big challenges facing the community. In the coming year, these are our priorities:

### Next Economy Jobs Challenge



#### Education & Employment

**Outcome 2:** Increased economic inclusion, resilience and workforce adaptability.

**Secondary Impact Areas:**

The COVID-19 pandemic has exposed the vulnerability of social, economic and environmental systems in Greater Melbourne. This Initiative will focus on catalysing new collaborations, and developing sustainable, inclusive, quality employment pathways in sectors such as clean technology, care economy, regenerative food/urban agriculture systems, community energy initiatives, and waste/circular economy.

### Climate Change Resilience in the West of Melbourne



#### Healthy & Resilient Communities

**Outcome 1:** Increased cross sector collaborations strengthening community resilience to extreme weather, pandemics and natural disasters.

**Secondary Impact Areas:**

Melbourne's West and its surrounding growth corridors face many intersecting challenges that are being exacerbated by climate change. The Resilient West initiative will tackle the drivers of these challenges in order to support a regenerative, sustainable and just future for the area. The Resilient West Initiative will test and potentially support a Transitions Hub which aims to connect a range of existing work and partners, and identify gaps and issues.

### Clean Technology Powerhouse 2



#### Environment & Sustainability

**Outcome 1:** Increased energy efficiency and climate resilience of vulnerable households.

**Outcome 2:** Increased public understanding of the climate challenge.

**Secondary Impact Area:**

The Foundation will implement the next phase of the Clean Technology Powerhouse Initiative, with a focus on rapidly decarbonising while revitalising the economy and creating jobs. The technological and economic case for domestic transition is clear for most sectors, such as housing, electricity and transport. The next step is to position Australia as a leading global clean energy exporter, which will accelerate our domestic decarbonisation, while reducing emissions internationally and creating job opportunities.

### Energy Efficiency and Climate Resilience in Vulnerable Households Initiative 2



#### Environment & Sustainability

**Outcome 1:** Increased energy efficiency and climate resilience of vulnerable households.

**Secondary Impact Area:**

Energy efficiency and small-scale renewables are cost effective means of reducing the cost of living for households, providing protection from temperature related health impacts, and reducing significant residential emissions. The Brotherhood of St Laurence is our key partner in this work.

### Affordable Housing Challenge 3



#### Homelessness & Affordable Housing

**Outcome 1:** Increased supply of quality, sustainable, affordable housing.

Building on the Foundation's long term commitment to preventing homelessness and increasing the supply of affordable housing, the Foundation will continue to grow the Affordable Housing Challenge first initiated in 2017/2018. This year, we will continue to work collaboratively with not-for-profit land owners and potentially a statutory authority to leverage well-located land suitable for affordable housing.

### Donor Engagement Initiative



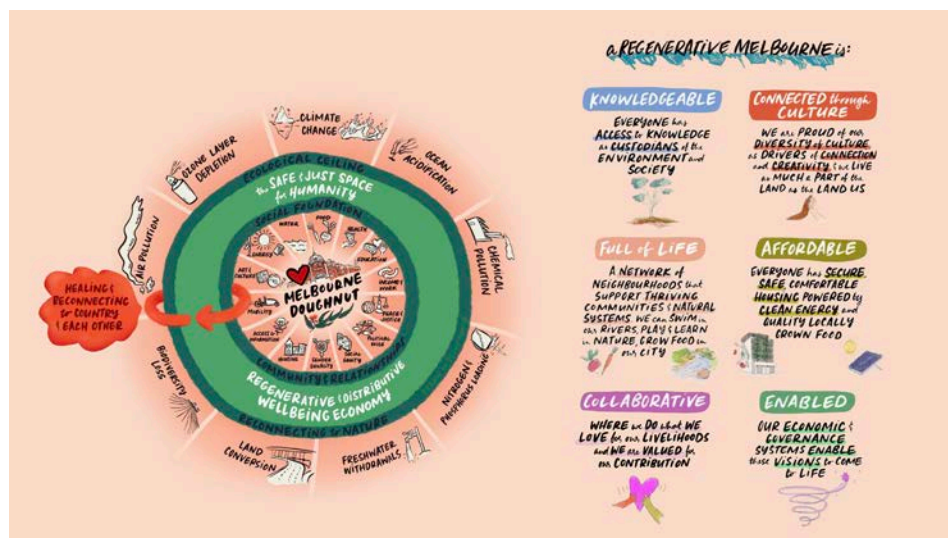
#### Grow philanthropy Initiative

Create new pathways for donors to join and engage with philanthropy through the Foundation.

## GRANTS

# Regen Melbourne

Organisations and individuals exploring community aspirations and new economic models for Greater Melbourne.



Regen Melbourne, Doughnut Economics methodology.



Online workshop discussion

## Regen Melbourne is a network of organisations and individuals exploring community aspirations and new economic models for Greater Melbourne.

Lord Mayor's Charitable Foundation is both a founding partner and funder along with Small Giants, City of Melbourne, Circular Economy Victoria and Coalition of Everyone.

Developed by economist Dr Kate Raworth, Doughnut Economics is being used by cities and localities internationally as a compass for human progress to guide policy development and service delivery. It places a city within its ecological and environmental limits along with social foundations and community engagement.

Regen Melbourne's first project was to explore Melbourne's post-COVID future through the lens of Doughnut Economics. Using one-to-one interviews, facilitated workshops and

digital tools, Regen Melbourne captured the vision of hundreds of Melburnians about a new and shared future.

Dr Raworth recently spoke at Melbourne Knowledge Week to launch the first Regen Community Insights report which includes reflections about what it means to be a healthy Melbourne, a connected Melbourne, an enabled Melbourne (education, economic opportunity, energy), an empowered Melbourne (social equity, peace and justice, participation) and an ecologically healthy Melbourne.

Based on the community insights so far, we know that our community wants a city that is knowledgeable, connected to

Online workshop discussion.



culture, full of life, affordable, sustainable, collaborative and enabled.

What is also clear from the Community Insights report is that within the challenges we face there lies enormous economic opportunity, including secure jobs for all in the next economy. This report is the beginning of developing a very inspiring shared vision for Greater Melbourne.



Learn more about Regen Melbourne and to download the report Towards a Regenerative Melbourne visit

[regen.melbourne](https://regen.melbourne)

Please contact Stephen Torsi Program Manager Education & Employment, if you have any specific questions or interest in this work.



## GRANTS

# Seed Innovation Grants 2021

**Seed Innovation Grants create opportunities for new and innovative thinking to support positive social change.**

**Lord Mayor's Charitable Foundation has provided \$574,398 in Seed Innovation Grants to 12 not-for-profit organisations working to support vulnerable people and communities. These grants will address climate change, healthy communities, employment opportunities through social enterprise, and homelessness.**

**These grants support the research, testing and/or piloting of new ideas and creative solutions to current social and environmental issues. Seed Innovation Grants provide funding of up to \$50,000 for one year.**

The Foundation's Chief Executive Officer Dr Catherine Brown OAM said, "The Seed Innovation Grants are critical to the Foundation's model of philanthropy. They are the first step in the innovation process and can lead to further grants where solutions demonstrated at the seed stage can be scaled up or replicated.

"A successful Seed Innovation Grant project might also generate enough evidence to attract government funding, impact investing or to establish a viable social enterprise."

## Education & Employment

ORGANISATION:

**SYN Media**

PROJECT TITLE:

**SYN Production Services**

GRANT: **\$48,478**

The Seed grant will enable SYN to expand its social enterprise activities through training and employment of young people as producers, editors and hosts in audio production.

ORGANISATION:

**Swinburne University**

PROJECT TITLE:

**WISE Workplace Inclusion Model for Wellbeing**

GRANT: **\$48,052**

Swinburne University will develop and test a new workplace inclusion model to support disadvantaged and marginalised groups in the workplace, including young people and people with disability.

ORGANISATION:

**JobWatch**

PROJECT TITLE:

**Your Rights at Work – Supporting Culturally and Linguistically Diverse Communities in their Native Language**

GRANT: **\$50,000**

JobWatch will develop a new online Multilingual Hub to provide key employment law information in the top 10 languages other than English spoken in Victoria being Mandarin, Italian, Greek, Vietnamese, Arabic, Cantonese, Punjabi, Hindi, Sinhalese and Spanish.

## Environment & Sustainability

ORGANISATION:

**Trust for Nature**

PROJECT TITLE:

**Securing our Sustainably-managed Farmland**

GRANT: **\$40,000**

Trust for Nature's project is an action research analysis to define a permanent protection and collective ownership model, supporting sustainably managed farmland; notably important periurban farmlands threatened by encroaching development.

ORGANISATION:

**Better Renting**

PROJECT TITLE:

**Healthy Homes for Renters**

GRANT: **\$45,000**

Better Renting is coordinating a National Collaboration to secure a commitment for every Australian jurisdiction to implement minimum energy efficiency standards for rentals and provide ongoing advocacy for energy efficient homes for vulnerable households.



ORGANISATION:

**Mount Alexander Sustainability Group**

PROJECT TITLE:

**Zero Net Retrofit for Vulnerable Communities Pilot**

GRANT: **\$50,000**

Mount Alexander Sustainability Group will show how low-income owner-occupiers and renters can have their homes retrofitted to a Zero Net standard using Environmental Upgrade Agreements (EUA).

## Healthy & Resilient Communities

ORGANISATION:

**The Australian Centre for Social Innovation**

PROJECT TITLE:

**Foregrounding Aboriginal & Torres Strait Islander Wisdom**

GRANT: **\$50,000**

The Australian Centre for Social Innovation will plan and create an Aboriginal & Torres Strait Islander led systems change network whose purpose is to reimagine and strengthen existing community resilience systems.

ORGANISATION:

**Australian Youth Climate Coalition**

PROJECT TITLE:

**Seed Mob**

GRANT: **\$50,000**

The vision is for Seed Mob to become an independent not-for-profit and to build and mobilise Indigenous communities for action on climate justice, while increasing the resilience of First Nations peoples to lead solutions to the climate crisis.

ORGANISATION:

**Not Yet It's Difficult**

PROJECT TITLE:

**Assembly for the Future**

GRANT: **\$49,750**

Assembly for the Future will create a series of participatory, digital gatherings in which the public co-create new visions for the future, building connections, hope and opportunities in response to social, climatic and health challenges.

## Homelessness & Affordable Housing

ORGANISATION:

**Federation University**

PROJECT:

**Shared Equity Home Ownership Scheme for the Younger Segment of the Population in Melbourne**

GRANT: **\$50,000**

Surveys of Victorian NRAS dwellings indicate a high rate of young tenants (18-44 age group) with home ownership aspirations. This project will establish the number of young NRAS tenants in Victoria and what the level of home ownership aspiration is among this group.

ORGANISATION:

**RMIT University**

PROJECT TITLE:

**Homelessness to a Home (H2H) Evaluation**

GRANT: **\$43,118**

This project will evaluate the outcomes of the *From Homelessness to a Home (H2H)* program. H2H is a Victorian State government initiative to provide access to long-term housing and support for 1,845 households who are residing in emergency accommodation due to Covid-19. It is important for the sector to share learnings from this program.

ORGANISATION:

**St Kilda Legal Service (SKLS)**

PROJECT TITLE:

**Fair Income for Housing Early Intervention to Secure the Correct Income Support for People Experiencing Homelessness**

GRANT: **\$50,000**

The project will scale-up SKLS support to Launch Housing residents with a project lawyer who will intervene early to support residents making Centrelink applications and seeking internal review of initial adverse decisions.



# Revitalising and Decarbonising Australia's Economy

Clean Technology  
Powerhouse Initiative

**Lord Mayor's Charitable Foundation recognises that we can hasten the transition to clean energy while rebuilding the economy. Economic inclusion is a key driver of the Foundation's work across its Impact Areas.**



**In fact, we can do more than transition our own energy systems. Australia can position itself as a clean energy exporter of global significance, exporting clean energy to other countries around the world. Within our borders, we have some of the best clean energy resources globally and we have the skills, institutions and infrastructure to utilise them.**

To help the country harness this opportunity and increase economic opportunity, especially for vulnerable communities, the Foundation is helping support not-for-profit partners who are making the case to key decision makers' and the broader community.

A range of engagement activities are highlighting the economic and employment opportunities associated with Australia's decarbonisation, so that everyone can see that clean energy is an opportunity rather than a cost.

Our partners, WWF, Beyond Zero Emissions, Climate Council and the Smart Energy Council have already delivered impressive policy outcomes. Two Smart Energy Council summits were delivered in 2020, with government, industry and academic experts

showing how to revitalise and decarbonise our economies at the same time. At least 10,000 delegates registered from around the world, social media was extensive and hundreds of television and newspaper pieces followed. A number of state governments have since made significant policy commitments to harness the clean energy export opportunity.

Beyond Zero Emissions and Climate Council have both realising detailed research and economic modelling to demonstrate the economic and employment benefits in a range of sectors and have worked closely with policy and industry stakeholders to begin working toward realising these.

WWF has recently launched the Renewable Superpower Scorecard, which presents a

snapshot of how Australia's states, territories and the federal government are performing in the race to become a renewable superpower. The highly publicised scorecard is creating a 'race to the top' and providing a different kind of climate narrative in the general public – that decarbonisation is an opportunity we don't want to miss.

Daniel Padiaditis  
Senior Program Manager  
Environment & Sustainability





## A Lifetime of Giving

**Paul Wheelton AM KSJ and Angela Wheelton OAM DSJ start in philanthropic giving with the Foundation**



**“When you are starting on your journey of philanthropy, you don’t have all the resources. By having a charitable fund account, you don’t have to worry about all the governance or compliance issues because it is all looked after by the Foundation.”**

– Paul

Paul Wheelton AM KSJ and Angela Wheelton OAM DSJ

**Over many decades Angela Wheelton OAM DSJ and Paul Wheelton AM KSJ have made their personal philanthropy an important and central part of their lives. They are well-known for their generous philanthropic support of many not-for-profit organisations and charity events across Melbourne as well as managing an education fund for children in Bali.**

Even though they are now preparing for retirement after successful business careers, they are still as busy as ever with their own philanthropic pursuits, including being involved with charitable organisations such as Rotary and Women Moving Millions.

“Both Angela and I come from humble beginnings and have always been involved in community activities in some way. When I started my business, I was working seven days a week. After a while I realised that I wasn’t active in the community as much as I used to be, and I wasn’t seeing where the need was any more.”

Paul says that one of the reasons he and Angela started a charitable fund account with Lord Mayor’s Charitable Foundation was to help them learn about the issues affecting Melbourne.

“By being involved with the Foundation we know that they are researching and understanding the needs of Melbourne as well as conducting the governance checks, so it gives you confidence in supporting those causes and charities that are important to you.”

Paul says that the real attraction of the Foundation is that it is perfect for anyone at any stage of their philanthropic journey, including for those who are just starting out.

“When you are starting on your journey of philanthropy, you don’t have all the resources. By having a charitable fund account, you don’t have to worry about all the governance or compliance issues because it is all looked after by the Foundation.”

It enables you to start at the small end of things and build up your giving and impact over time.”

Positive collaborations, partnerships and leveraging resources have all been at some stage part of the success of the Wheelton’s philanthropy.

“We both love working with positive people and being part of the Foundation’s networks of donors which is full of positive, supportive and innovative people who are doing terrific things,” added Paul.



**Read more about Paul and Angela’s donor journey with Lord Mayor’s Charitable Foundation at:**

**[lmcfa.org.au/wheelton](https://lmcfa.org.au/wheelton)**

## Time, Talent and Treasure

### Wendy Lewis' giving journey with the Foundation

**Wendy Lewis OAM is well known as an inspiring community leader and was acknowledged in this year's Australia Day Awards with a Medal of the Order of Australia for her contribution to 'service to the not-for-profit sector and to education'.**

Wendy's long and established career in education and non-profit leadership includes her commitment to creating positive social change in communities across Melbourne. Wendy is Chair of the Knox School, and Invergowrie Foundation, and is Executive Officer of the Collier Charitable Fund.

There is also a very special and historic connection between Lord Mayor's Charitable Foundation and Collier Charitable Fund. The Foundation became a beneficiary of the Collier Charitable Fund in 1954 under the Wills of Alice, Annette and Edith Collier.

Wendy is also a founding member of Melbourne's Women's Fund (one of the Foundation's Giving Circles) and is currently a PhD candidate at Queensland University of Technology's Australian Centre for Philanthropy and Not-for-Profit Studies.

Wendy is a long-term donor through a charitable fund account and has been a valued coach in the Foundation's Youth in Philanthropy program for the past nine years.

**"Philanthropy is about time, talent and treasure, and so my charitable fund enables me to make another type of contribution to the community."**

Wendy says that setting up her charitable fund account was a very simple process and says that, as an accountant, she realised it was far better to support charities by making tax-deductible donations than paying more tax.

"Education, supporting women and girls, scholarships, animal welfare and animal assisted therapy are some of the areas I am passionate about. My giving has become less of a 'scatter gun' approach and has become more targeted over the years through my charitable fund."

Wendy says she would like to encourage more people to establish charitable fund accounts.

"I'd certainly be recommending a charitable fund account because I think it's a way to get people involved in philanthropy and learn about giving, and the impact you can have through giving."

"I am very fortunate to be the Executive Officer of Collier Charitable Fund which has enabled me to build my relationship with the Foundation and to build my contribution to the community through philanthropy."



**Read more about Wendy's donor journey with Lord Mayor's Charitable Foundation at:**

[lmc.org.au/lewis](https://lmc.org.au/lewis)



Wendy Lewis OAM

## Honouring Heather

**John Bradley's journey  
with The Compassionate  
Friends and the Foundation**

**John Bradley knows from experience the devastating impact that grief can have on a person. After the death of his beloved daughter Heather in 2005, John turned to The Compassionate Friends (TCF) for support.**

John says that The Compassionate Friends, who provide support to grieving parents, siblings and grandparents, provided him with the opportunity to grieve, heal and grow after Heather's death.



John Bradley

"All staff and volunteers at The Compassionate Friends have experienced the loss of a child, and so their kindness and empathy was a great comfort," said John.

John eventually became a volunteer to support other grieving families and to repay the support, kindness and understanding he had received.

With the fifth anniversary of Heather's passing approaching in 2010, John felt as though he needed to do more to support The Compassionate Friends and honour Heather's memory at the same time.

"When I became aware of the Lord Mayor's Charitable Foundation and their charitable fund accounts, I thought how wonderful it would be to set-up a memorial fund in Heather's

name while also supporting The Compassionate Friends.

After learning more about charitable fund accounts with the Foundation, John said he was amazed at how affordable, simple and quick it was to set-up his memorial fund, which he named The Heather Bradley Memorial Fund.

"It did not take me too long to realise what a wonderful opportunity this was to honour Heather's memory in a way that also benefits The Compassionate Friends."

"I honour Heather's memory permanently as her fund will continue in perpetuity."

John's son Alexander, who is a professional photographer in France, supports Heather's memorial fund by publishing

a limited run of a high-quality calendars and donates proceeds from the sale of each calendar to The Heather Bradley Memorial Fund.

"All in all, this has been a win, win situation for me. A win, for The Compassionate Friends as they receive a donation from Heather's memorial fund each year to support their important work with bereaved parents and siblings; and a win for the Lord Mayor's Charitable Foundation as they work towards initiatives that will best tackle the current and future needs of Melbourne."

"For more than ten years now, I have honoured Heather's life. I win too because Heather's name will continue in perpetuity and I'm supporting The Compassionate Friends to carry on their good work."

To learn more about  
The Compassionate Friends,  
[compassionatefriendsvictoria.org.au](https://compassionatefriendsvictoria.org.au)

To learn more about how you can honour your loved ones, through the establishment of a memorial charitable fund account, please contact Connie Honaker, Donor Development Manager, on (03) 9633 0033 or [connie.honaker@lmcf.org.au](mailto:connie.honaker@lmcf.org.au)



# Make a donation

**Tear off this donation slip and send using the enclosed reply-paid envelope or send to:**

**Lord Mayor's Charitable Foundation  
Reply Paid 1851, Melbourne VIC 3001**

Cheque: Please make payable to  
**Lord Mayor's Charitable Foundation**

Phone: Please call **(03) 9633 0033**

Online: Visit **lmcf.org.au/donate** or to  
donate to a Charitable Fund Account  
visit **lmcf.org.au/support-a-cfa**

☐ **I would like to make a donation to Lord Mayor's Charitable Foundation:**

**Donation amount:**

☐ \$5,000 ☐ \$1,000 ☐ \$500 ☐ \$250 ☐ \$100

☐ My choice: \$ \_\_\_\_\_

☐ Please make this a recurring monthly donation

AND  
/OR

☐ **I would like to make a donation to the Foundation's Impact Areas:**

☐ COVID-19 Build Back Better campaign \$ \_\_\_\_\_

☐ Education & Employment \$ \_\_\_\_\_

☐ Environment & Sustainability \$ \_\_\_\_\_

☐ Healthy & Resilient Communities \$ \_\_\_\_\_

☐ Homelessness & Affordable Housing \$ \_\_\_\_\_

AND  
/OR

☐ **I would like to make a donation to an existing Charitable Fund Account with Lord Mayor's Charitable Foundation:**

Name of Fund Account: \_\_\_\_\_

**Donation amount:**

☐ \$10,000 ☐ \$5,000 ☐ \$1,000 ☐ \$500 ☐ \$250

☐ My choice: \$ \_\_\_\_\_

☐ Please make this a recurring monthly donation

## Personal Details:

Title: \_\_\_\_\_

Name: \_\_\_\_\_

Address: \_\_\_\_\_

Suburb: \_\_\_\_\_ Postcode: \_\_\_\_\_

State: \_\_\_\_\_ Phone: \_\_\_\_\_

Email: \_\_\_\_\_

Please charge my: ☐ **Visa** ☐ **MasterCard** ☐ **American Express**

Name on card: \_\_\_\_\_

Card number:

--	--	--	--	--	--	--	--	--	--	--	--	--	--	--	--

Expiry:

		/		
--	--	---	--	--

**Cardholder's signature:**

**Date:**

\_\_\_\_\_/\_\_\_\_\_/\_\_\_\_

In making this donation, I confirm I am over 18 and that I have read the collection notice on the back. If you are not over 18, you must provide your parent's or guardian's permission.

- ☐ **I have made a gift in my Will to Lord Mayor's Charitable Foundation**
- ☐ **I intend to leave a gift in my Will to Lord Mayor's Charitable Foundation**
- ☐ **Please contact me about making a gift in my Will to Lord Mayor's Charitable Foundation**
- ☐ **Please tick if you do not wish to receive further fundraising or marketing communications from us**

All contributions of \$2 or more to Lord Mayor's Charitable Foundation (ABN 63 635 798 473) are tax deductible.

**Thank You!**



# Donation form



**Now more than ever,  
the wider Melbourne  
community needs  
our support**



## Collection notice:

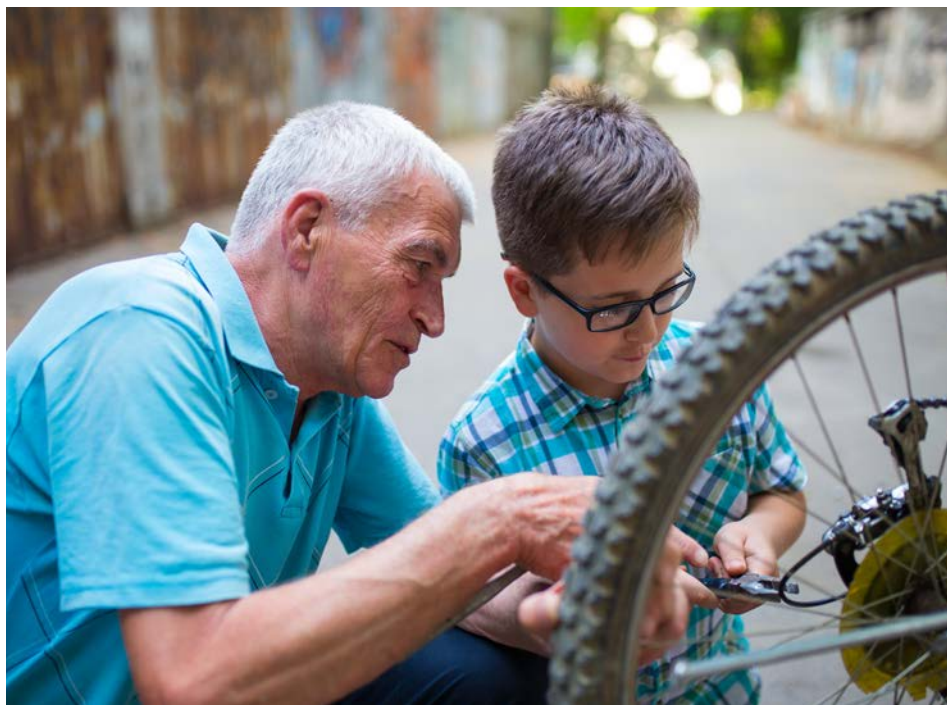
Lord Mayor's Charitable Foundation collects, uses and holds your personal information to process and receipt your donation, communicate with you about our campaigns, events, fundraising appeals and causes you may wish to consider supporting.

If you do not provide this information, we may not be able to process your donation. Due to the nature of our organisation, personal information collected by us may be disclosed to Foundation personnel, contractors and third-party data hosting service providers located overseas including in the United States of America. All personal information collected will be securely stored by the Foundation and protected from unauthorised use or access. In most cases, where the Foundation uses or transfers information to an overseas third party, the information will be de-identified. In making a donation, you consent to your information being disclosed outside Australia for this purpose. We will take all reasonable steps to ensure that your personal information is used by third parties securely and in accordance with the *Privacy Act 1988* (Cth), in our terms of engagement with those parties. For more information on how we handle your personal information, the Foundation's responsibilities and your rights please review our Privacy Policy at [lmcf.org.au/privacy](https://lmcf.org.au/privacy).

*If you wish to remain anonymous when making a donation, update or seek correction of your information or unsubscribe from marketing communications, please contact our Privacy Officer at [info@lmcf.org.au](mailto:info@lmcf.org.au) or (03) 9633 0033.*

## Your giving journey

What will your legacy be?



### Have you thought about the legacy you want to leave for future generations of Melburnians?

Many people who are contributors to the Melbourne community as donors and volunteers, eventually begin to think about their legacy.

Whether it is a particular issue or charity, or supporting the Melbourne community as it faces future challenges, you can build your impact today and your legacy in the future with a gift that establishes a Charitable Fund Account.

A Charitable Fund Account in the Lord Mayor's Charitable Fund is a powerful and efficient way to leave a legacy for future generations. We do all the compliance and governance work, with no establishment fee and very low annual fees, leaving you to focus on the causes closest to your heart and the impact that you wish to create for years to come. You can also leave a bequest to build your charitable fund account further.

**Learn more about the benefits of establishing a Charitable Fund Account by contacting Connie Honaker, Donor Development Manager, on (03) 9633 0033 or at [connie.honaker@lmcf.org.au](mailto:connie.honaker@lmcf.org.au)**



### Donate to support our COVID-19 recovery

2020 showed that community philanthropy played a critical role in supporting Greater Melbourne as we tackled the health, social and economic impact of COVID-19.

Together with our committed donors and supporters, we were able to assist with urgent requests for help from charitable and health organisations in areas such as preventing homelessness, domestic violence and food relief as well as longer-term recovery support including funding for critical online technology and legal services for the charitable sector.

We are still on this journey of supporting employment readiness and employment focused social enterprises, and the resilience of the charitable sector, as we continue to respond to the health and social challenges of COVID-19.

Now more than ever, the wider Melbourne community needs all our continued support. You can donate to our COVID-19 Community Resilience Fund Account to support our grants program or top-up your own charitable fund account.

**Please use the donation slip attached or visit our website**

** [lmcf.org.au](https://lmcf.org.au)**