

INNOVATION GRANT

Guidelines



For over 95 years, Lord Mayor's Charitable Foundation has made a real and lasting impact on the big challenges facing Melbourne.

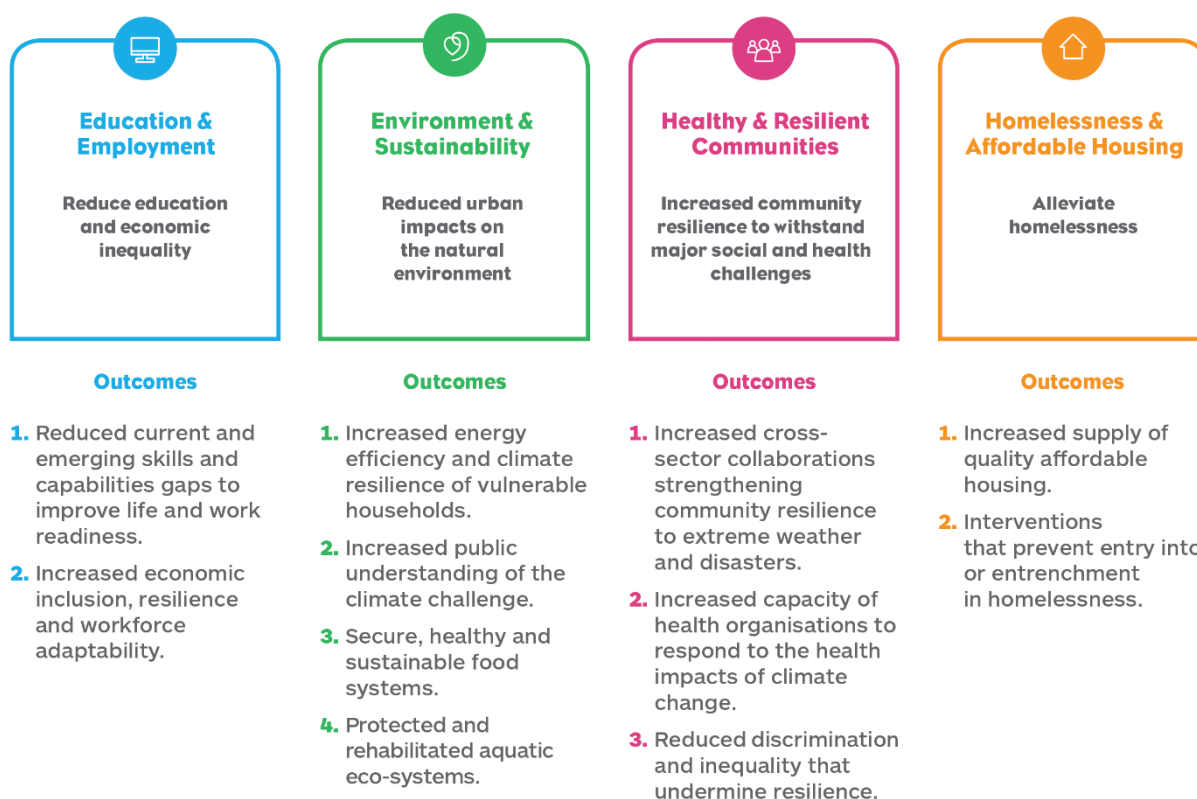
Innovation Grants are an opportunity for leaders within the charitable sector to develop and implement effective solutions to social and environmental issues.

Whether it is piloting or scaling a new program, service delivery model, social enterprise or developing policy & research for systems change, Innovation Grants are to test, develop and demonstrate new solutions, big or small.

Social innovation is “a novel solution to a social problem that is more effective, efficient, sustainable, or just than present solutions and for which the value created accrues primarily to society as a whole rather than private individuals.” (*Centre for Social Innovation, Graduate School of Business, Stanford University*).

Our Impact

The Foundation gathers research and consults widely with stakeholders as part of our strategic planning process to ensure we are working on the big challenges facing Melbourne and the broader community. The Impact Area Outcomes have been refreshed following this process, [read our Strategic Plan here](#). Innovation projects must align with one or more of our [Impact Area Outcomes](#).



INNOVATION GRANT

Guidelines



Our Approach

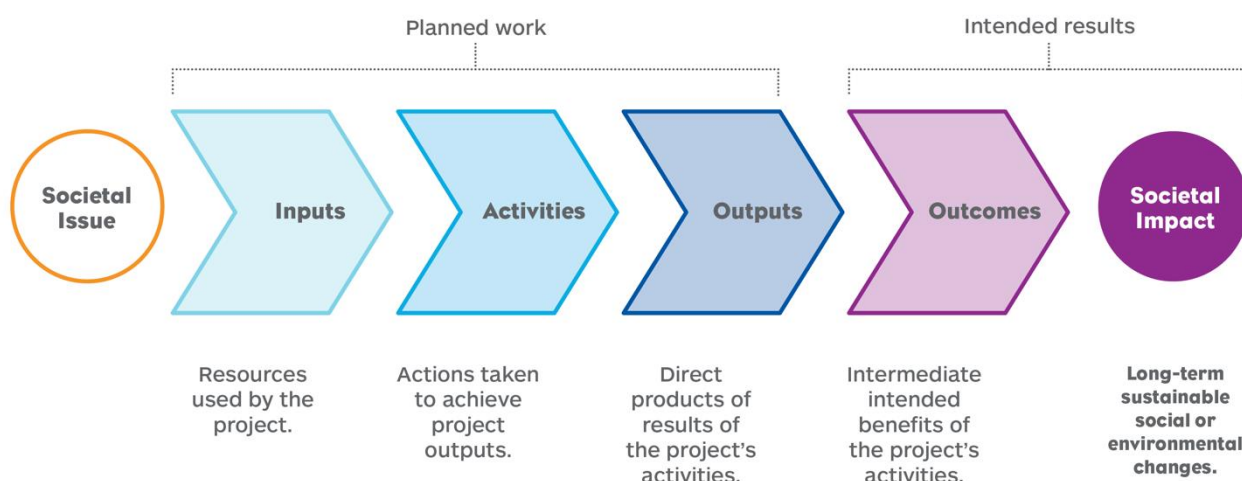
The Foundation's grantmaking is driven by our vision of an inclusive and resilient community and guided by our [values](#) and [granting principles](#). We seek out and develop [projects and initiatives](#) that reflect the many aspects of our [philanthropic toolbox](#). We also work proactively on key initiatives in our Impact Areas.

Our project logic model (see below) helps us work with our grant partners to define project specific outputs and outcomes that align with our grant partner's and the Foundation's own impact objectives.

Grant partners report on activities, outputs, outcomes, targets and budget expenditure in Progress and Acquittal Reports. Learning is an important part of the innovation process and the Foundation is committed to sharing project findings and reports with the broader sector including via our website.

Partners are requested to be as specific as possible when proposing project budgets.

Project logic model



INNOVATION GRANT

Guidelines



Innovation Grant Round Information

Applications open: **9am Monday 19 August 2019** to **5pm Monday 16 September 2019**.

[Eligible](#) organisations can apply for either a Seed or Scaling Up Innovation Grant in any of our four [Impact Areas](#).

Seed Innovation Grants

AMOUNT: Up to **\$50,000 for one year**. Please only apply for the amount required.

These grants support the researching, testing or piloting of a new idea or approach. This can include:

- Project funding to test, demonstrate, trial or pilot a new concept or idea that will lead to a service improvement or an advance in a major community issue.
- Research funding to build understanding of an area or issue.
- Inform program design policy development, philanthropic investment or identify best practice.
- Funding to support the initial development phase of a social enterprise that addresses at least one Impact Area Outcome.

** Seed Innovation Grant projects may be considered for a Scaling-Up Innovation Grant in future years.*

Scaling-up Innovation Grants

AMOUNT: Up to **\$300,000 for two years** (maximum of \$150,000 per year). Please only apply for the amount required.

These grants support the expansion or replication of a proven innovation with the potential to be transformative on a broader community or systems level. This work can include:

- Piloting or scaling up a new service model or developing social enterprise.
- Applying a new approach to improving service effectiveness and/or service quality.
- Increasing impact and/or service effectiveness through sharing space or back office support, or other forms of partnership, merger or collaboration.
- Building an understanding of an emerging issue or area through applied research (i.e. research that has application in practice).

INNOVATION GRANT

Guidelines



Eligibility

Organisations applying under the **Education & Employment** and **Environment & Sustainability** Impact Areas:

- Must be endorsed as a Tax Concession Charity (TCC).
- Grants provided especially to Australian charities operating in Victoria, New South Wales and Australia Capital Territory.

Organisations applying under the **Healthy & Resilient Communities** and **Homelessness & Affordable Housing** Impact Areas:

- Must be endorsed as a Tax Concession Charity (TCC) and as a Deductible Gift Recipient (DGR) as covered by Item 1 of the table in section 30-15 of the Income Tax Assessment Act 1997.
- Grants provided to Australian charities registered and operating in Victoria, especially but not limited to Greater Melbourne.

Application and Reporting Process

1. Check organisation eligibility and project alignment with at least one [Impact Area Outcome](#).
2. Speak with the relevant Program Manager (contact details on website) before applying (or the application may not be considered).
3. Submit your application through our [Grants Portal](#). Organisations new to the Foundation must provide Tax Endorsement Notices to receive Grants Portal access.
4. Application check list:
 - ✓ [ACNC](#) link to latest financial information. If your organisation is less than 12 months old, please provide a copy of your financial statements to date.
 - ✓ A completed [Project Implementation Plan](#).
 - ✓ A completed budget including confirmed funding or in-kind support.
 - ✓ Additional information such as project partner letters of support.
5. All applicants will be advised of an outcome before 1 January 2020.
6. Successful applications will receive a Grant Agreement to be signed by both parties, along with a completed EFT form.
7. The grant will be paid (or first instalment for Scaling-up Innovation grants).
8. Report due dates are specified in the Grant Agreement. Progress Reports are due mid-way through all two-year grants. Acquittal Reports are required at the end of all projects. Report templates will be available on the Grants Portal.