

**GREATER  
MELBOURNE  
VitalSigns™  
2020**



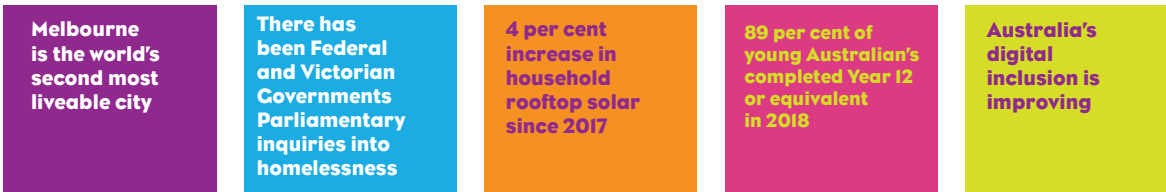
## Special Edition



# WELCOME TO GREATER MELBOURNE VITAL SIGNS 2020 SPECIAL EDITION

Greater Melbourne Vital Signs takes the ‘pulse’ of our city. It provides a snapshot of its health and vitality and identifies the things we can celebrate and the issues we face as we all create a sustainable and resilient city.

## WHAT WE CAN CELEBRATE



## THINGS WE NEED TO WORK ON



The goal of *Greater Melbourne Vital Signs 2020 Special Edition* is to share how the COVID-19 pandemic has revealed the weak points in our social fabric, and showcased our inherent ability to adapt rapidly whilst also providing opportunities for significant systemic change previously thought impossible.

We hope this report will help charities, not-for-profit organisations, other foundations, policy advisors and our local communities to identify where together we can make the most difference and how through collaboration, knowledge sharing and innovation we can strengthen our community to overcome the challenges ahead.

## LORD MAYOR'S CHARITABLE FOUNDATION

Lord Mayor's Charitable Foundation is Australia's largest independent community foundation. It inspires philanthropy throughout Melbourne and the wider community, and creates positive social change through its support of charitable organisations delivering innovative and effective programs.

## WE ARE AUSTRALIA'S LARGEST COMMUNITY FOUNDATION

Established in 1923, the Foundation connects people, ideas and funding to meet the challenges and needs of the people of Melbourne now and into the future.

Vital Signs is an international program, begun in Canada in 2001, that measures the health and vitality of communities and builds community engagement around core issues of liveability. Lord Mayor's Charitable Foundation is a member of the international Vital Signs network.

## OUR GREATER MELBOURNE AREA

This Vital Signs report focuses on information and data for the 'Greater Melbourne' area. The Greater Melbourne area includes 31 local government areas stretching from the Yarra Ranges to Wyndham and the Mornington Peninsula to Whittlesea. If Greater Melbourne data is not available, we have used local government, state or national data.

## 2020 GREATER MELBOURNE COMMUNITY PERCEPTIONS SURVEY

In May 2020 the Foundation undertook a pilot survey of 500 people who live, study or work in Greater Melbourne to gather information about the big issues facing the region including the COVID-19 pandemic.

Preliminary results revealed that the community recognises the highly liveable nature of Melbourne through opportunities to attend and participate in events, celebrate our diverse culture and values as well as access to excellent services such as our healthcare system.

The survey showed that the top 3 community concerns are well aligned with the available snapshot data reinforcing our areas for improvement for the Greater Melbourne community.

## Top 3 General Community concerns

- Level of homelessness and housing affordability
- Levels of household debt
- Levels of poverty

## Top 3 Community concerns relating to COVID-19

- Short term economy
- Long term economy
- Health of older relatives

# GREATER MELBOURNE VITAL SIGNS 2020 SNAPSHOT



## GREATER MELBOURNE AT JULY 2020

### Population<sup>1</sup>

4.96M

### Population density

497

people per sq kilometre

UP BY 8 PER CENT  
SINCE 2017

### Age

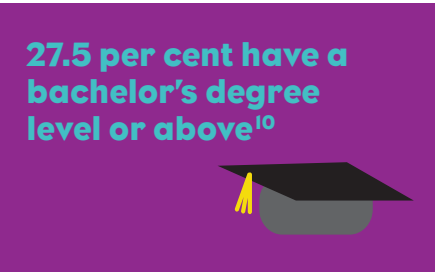
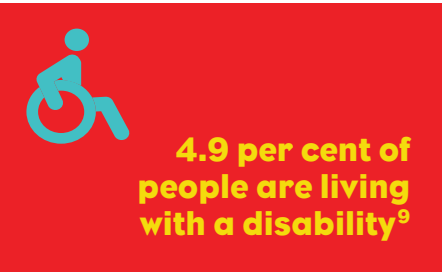
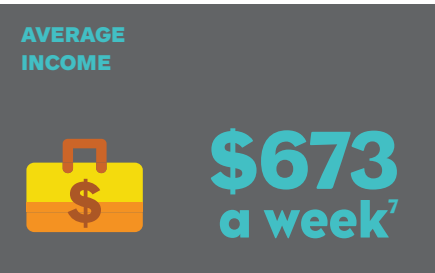
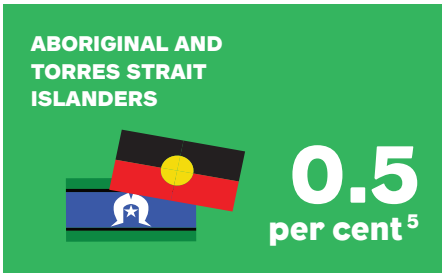
18%  
Children  
0-14 YEARS

14%  
Youth  
15-24 YEARS

50%  
Adults  
25-60 YEARS

19%  
Seniors  
OVER 60 YEARS

## ABOUT PEOPLE IN MELBOURNE



For more information about the Foundation visit [lmc.org.au](https://lmc.org.au)

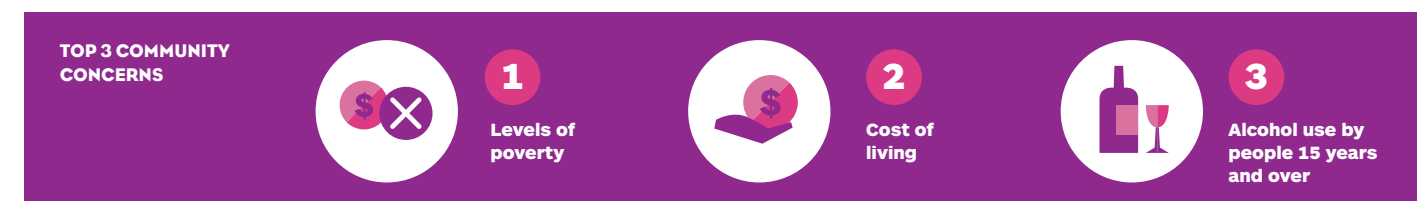
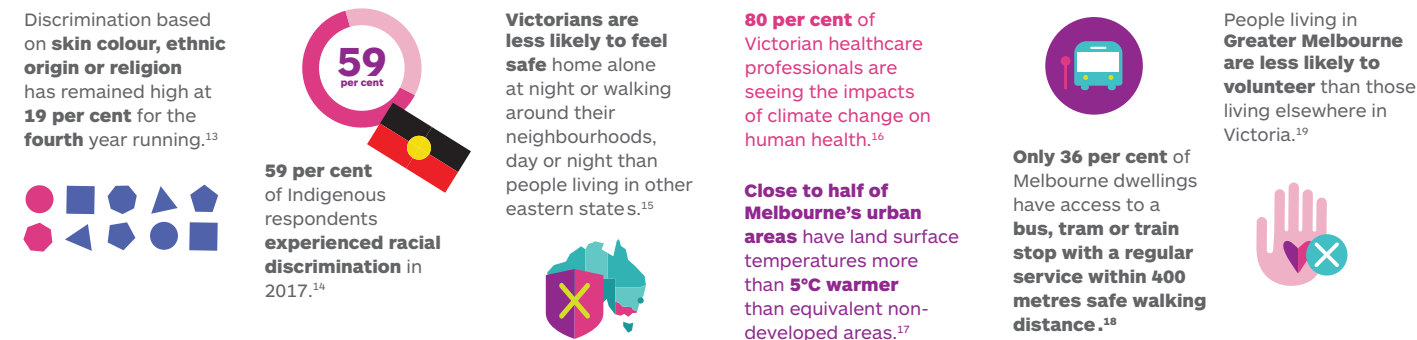


Learn more about VitalSigns, visit [lmc.org.au/MelbVitalSigns](https://lmc.org.au/MelbVitalSigns)

GREATER  
MELBOURNE  
VitalSigns™  
2020

# HEALTHY & RESILIENT COMMUNITIES

The major environmental, health and social challenges we face, including those attributed to climate change, require new ways of collaborating to build community resilience.



## SUPPORTING RESILIENCE AND RECOVERY

How we adapt and evolve with the compounding nature of community challenges is, to a large extent, dependent on work done at the community level. Communities with high levels of participation, social cohesion and equitable access to resources and systems are better equipped to respond to and recover from major emergencies and chronic stressors.

Understanding and addressing how these events disproportionately impact people experiencing disadvantage and structural discrimination is critical to protecting health and increasing resilience in our communities.



### MONASH UNIVERSITY

**Living clinical guidelines for the clinical care of COVID-19**

The Australian Living Evidence Consortium rapidly established the National COVID-19 Clinical Evidence Taskforce which is using Veritas Health COVIDENCE technology to provide 'living' clinical guidelines for healthcare assessment and treatment. Continuous evidence surveillance is being undertaken using COVIDENCE to identify and rapidly synthesise emerging research providing weekly national, evidence-based guidelines for the clinical care of people with COVID-19.

The world first in evidence-based "living guidelines" address questions that are specific to managing COVID-19 and cover the full disease course across mild, moderate, severe and critical illness.

The Foundation supported this project alongside major support from DHHS Victoria, Medical Research Future Fund, Ian Potter Foundation and other philanthropic supporters. Outputs to date include 20 weekly Taskforce communiques which have consolidated and shared findings distilled from thousands of research reports into clinical flowcharts and protocols.



To learn more, visit: [covid19evidence.net.au](https://covid19evidence.net.au)

### ALFRED HEALTH

**Research to support the prevention and treatment of COVID-19 for the most disadvantaged**

The Foundation provided a grant to Alfred Health to support research to understand the impact of COVID-19 on vulnerable people in our community such as older people living in aged residential care and people with compromised immune systems. The research will provide evidence and advice that will inform how best to look after people with COVID-19 and improve the public health response to COVID-19.

The Foundation has provided this grant to ensure the most disadvantaged and vulnerable communities that are at-risk of severe diseases are a priority in the healthcare response during the COVID-19 pandemic.

As a result, the Alfred's Department of Infectious Diseases will be able to provide more detailed data to public health units to improve the public health response to COVID-19 and advise how best to deploy interventions such as flu vaccine programs and infection prevention interventions in the community.



To learn more, visit: [alfredhealth.org.au](https://alfredhealth.org.au)

### GATHER MY CREW

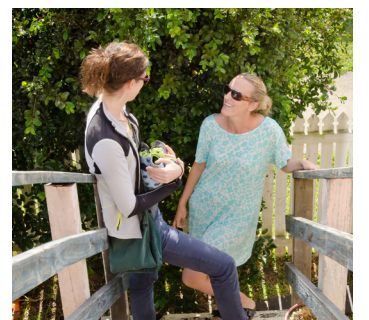
**Creating and building support networks for vulnerable people**

Gather My Crew is an online tool that enables people facing challenging times or a crisis to reach out to their family and friend networks and develop a schedule of care and support.

Gather My Crew has been working with emergency response organisations and community sector partners during the bushfires and now COVID-19 to create tailored technology solutions that activate and coordinate online 'support crews' around vulnerable and isolated Victorians.

The Foundation's grant supported the development of three new types of crews: street crews for local neighbourhoods to help one another, volunteer crews in local government areas to support the most vulnerable and isolated people within communities, and kindness crews to support healthcare professionals who are working to support Australia during the COVID-19 crisis.

Early learnings from this rapid response grant led to a clearer understanding of what was needed at a community level to enact ongoing and sustainable change. An additional grant secured from the Victorian Government 'Let's Stay Connected Fund' mean these learnings are now being applied in conjunction with three local councils through the Community Mobilisation Project to optimise provision of assistance to people in need.



To learn more, visit: [gathermycrew.org.au](https://gathermycrew.org.au)



# HOMELESSNESS & AFFORDABLE HOUSING

Access to safe, affordable housing that meets the diverse needs of a community is a key measure of a successful city.



Melbourne is the fourth least affordable major housing market internationally. Only Hong Kong, Vancouver, and Sydney are less affordable than Melbourne.



The median price for a dwelling in Greater Melbourne was \$665,000 in 2019.



It will take 9.6 years for a median income household to save a 20 per cent deposit for a median priced home in Melbourne.



There are roughly 82,000 people currently on the public housing waiting list.<sup>29</sup>

Families with children with a female main income earner are more than twice as likely to be in poverty as those with a male main income earner.<sup>30</sup>

Women over 55 years are the fastest growing group experiencing homelessness.



19-24 year olds have the highest rate of homelessness at nearly 1 in 100 compared to 1 in 200 of the general population.



This is even higher for Aboriginal and Torres Strait Islander young people who make up 25 per cent of 15 to 24-year-olds seeking help for homelessness.



LGBTQIA+ people in Victoria are twice as likely to experience homelessness.

## IMPACT OF COVID-19

The pandemic has brought about some of the most significant policy reforms in housing and homelessness seen in the last fifty years:



\$500 million COVID-19 Victorian Government Building Works program to build and upgrade community and public housing.

Emergency hotel accommodation (July 2020) estimated: <sup>31</sup>

2,000

including:

220 Children

500+ Women

1,100 Single person household



\$20 million Victorian Government support to keep more family violence victim survivors safe in their own homes and to adapt family violence services under COVID-19 restrictions.



\$150 million Victorian Government From Homelessness to a Home package to support those in emergency hotel accommodation out of homelessness and into their own homes.

Introduction of eviction moratorium (until March 2021).



32,000 reduced rental agreements registered with Consumer Affairs Victoria (CAV) as of September 2020.<sup>32</sup>



## TOP 3 COMMUNITY CONCERNS



1

Level of homelessness



2

Housing affordability



3

Levels of household debt

## SUPPORTING RESILIENCE AND RECOVERY

Melbourne continues to be one of the most unaffordable housing markets in the world which directly impacts the number of people experiencing homelessness. Melbourne needs a long-term plan to increase its affordable housing, so that it remains one of the most liveable cities in the world.

As a community, we must focus on systemic, lasting interventions that prevent homelessness or stop entrenched homelessness so that incidents of homelessness are brief.

### JUSTICE CONNECT

Dear Landlord getting help to prevent homelessness when affected by COVID-19.

Thousands of Victorians working in retail, travel, hospitality and customer service became unemployed due to the public health requirements and economic downturn caused by the COVID-19 pandemic.

Justice Connect is a leading community legal centre that specialises in a variety of legal areas, including Homeless Law - a program which provides online resources and tools to help people find information and advice to remain housed.

The \$120,000 Foundation grant increased their capacity to provide a series of tailored legal information and advice for their online self-help hub responding directly to external factors caused by COVID-19.

The self-help hub also provides other related legal information for employment, social security and domestic violence. It also translated COVID-19 related government policy and assistance into plain, easy to understand language.



To learn more, visit [justiceconnect.org.au](https://justiceconnect.org.au)

### COUNCIL TO HOMELESS PERSONS

Everybody's Home

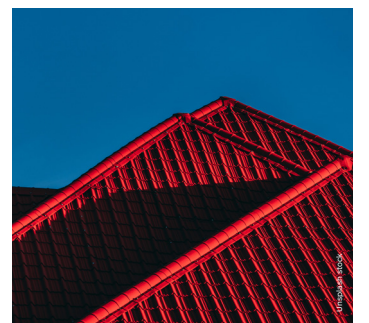
The COVID-19 pandemic has seen the rapid implementation of some of the most significant policy reforms in housing and homelessness in the last 50 years including the rapid rehousing of rough sleepers, doubling of the JobSeeker payment and introduction of the JobKeeper payment.

Council to Homeless Persons launched Everybody's Home in 2018 to bring cohesion and coordination to the community sector's voice advocating for better homelessness and housing policies.

The collaboration now includes over 300 organisational members across the housing and homelessness sectors, local government, and other industries.

A new plan to ensure COVID-19 related housing and homelessness issues continue to receive funding to ensure Australians remain housed involves raising public awareness about the issues of homelessness and housing in the current context, and significantly increasing sector engagement with state and federal governments.

The Foundation's grant will enable Everybody's Home to advocate for 500,000 new social and affordable homes as part of the post-pandemic stimulus package.



To learn more, visit: [everybodyshome.com.au](https://everybodyshome.com.au)

### DOMESTIC VIOLENCE VICTORIA

COVID-19 and Family Violence Crisis Response

The COVID-19 lockdown, economic hardship, social isolation and the restriction to movement has contributed to increased rates of family violence.

World Health Organisation statistics report a significant increase in family violence brought about by the restrictions used to minimise the impact of COVID-19.

The Foundation has provided a grant to Domestic Violence Victoria to lead the establishment of new pathways for victim survivors to access family violence support, the production of resources, and the establishment of new industry partnerships.

This project includes the research needed to publish and distribute family violence information at new access points. The Foundation's funding focuses on women with disability. Women with Disabilities Victoria will produce disability inclusive and accessible family violence resources for the community.

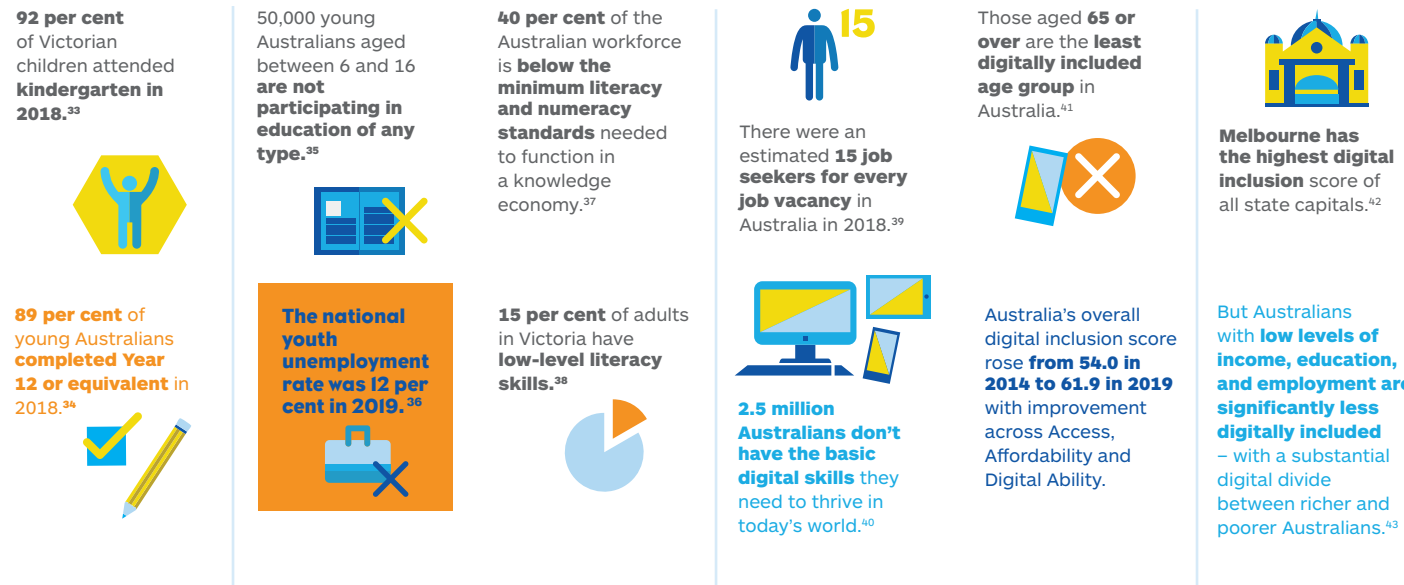


To learn more, visit: [dvvic.org.au](https://dvvic.org.au)

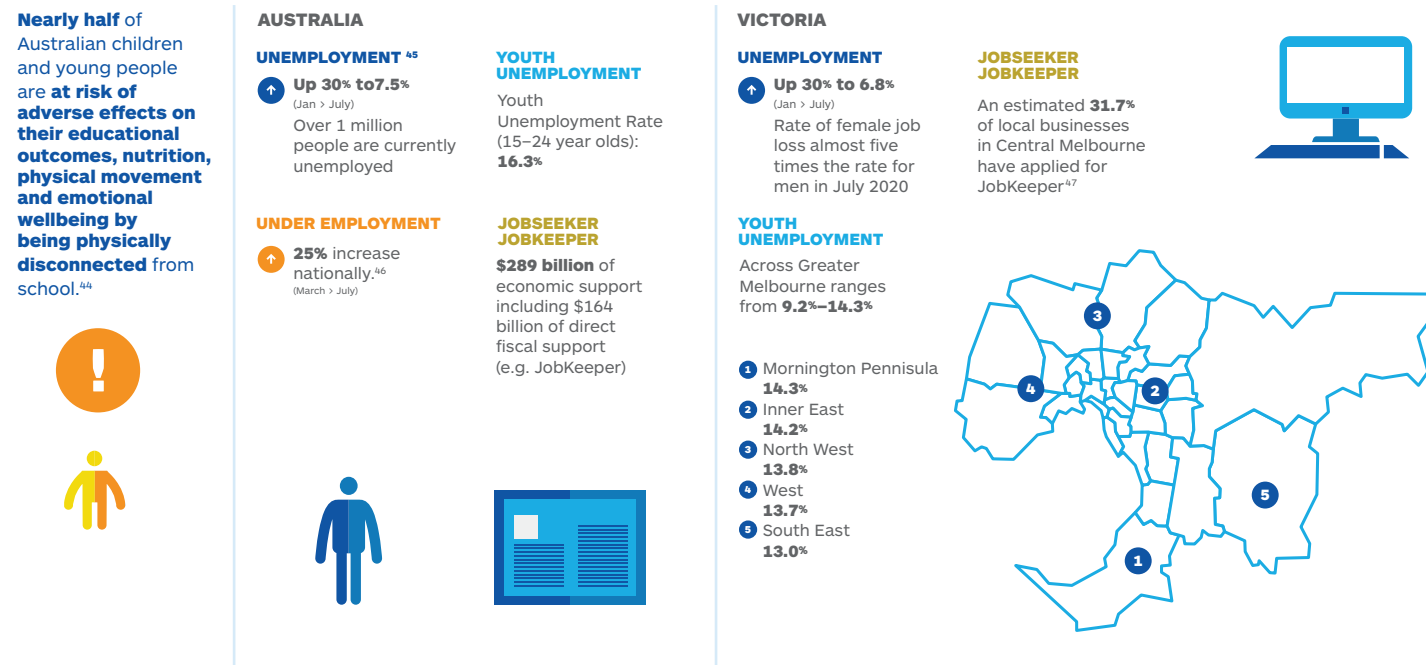
# EDUCATION & EMPLOYMENT



Melbourne is a vibrant student city, with more than 1,290 primary and secondary schools teaching 700,000 young people. One of the great education cities of the world, it is home to seven universities.



## IMPACT OF COVID-19



## TOP 3 COMMUNITY CONCERNS



## SUPPORTING RESILIENCE AND RECOVERY

The importance of equal access to education at all ages is well known. Ensuring that everyone, young or old, can develop the skills and experience to actively participate in meaningful work and contribute to their community presents challenges.

More than ever before new and innovative approaches are needed to better enable our young people to be workforce ready and to ensure the participation of older Australians faced with under or unemployment but still keen to learn and work.

### AUSTRALIAN COUNCIL OF SOCIAL SERVICE

#### Raise the Rate campaign

The Raise the Rate campaign is a national advocacy campaign targeted at raising the weekly rate of the Newstart Allowance (now known as JobSeeker Payment). The Foundation joined forces with 14 other philanthropic trusts and foundations to support this three year campaign.

Pre-COVID-19 JobSeeker had not increased in real terms for 26 years, creating a poverty trap for a growing number of Australians.

The campaign has used strong economic data and deeply personal stories to galvanise support from a wide range of individuals and organisations. The campaign has now shifted to #raisetherateforgood to ensure that the higher level of Job Seeker is kept beyond the pandemic and to adequately support Australians and the economic recovery.



To learn more, visit: [raisetherate.org.au](https://raisetherate.org.au)

### YOUTH AFFAIRS COUNCIL VICTORIA (YACVic)

#### COVID-19 Support for increased capacity needs

COVID-19 is severely affecting the health and wellbeing of young people due to major disruptions to their education and employment. Many young people are also facing existing issues such as family violence, discrimination and housing shortages. There is great concern that this generation of young people will face huge economic and mental health challenges.

The current crisis has significantly increased the workload of Youth Affairs Council Victoria (YACVic), the peak body for the youth sector and young people in Victoria. Its Youth Disability Advocacy Service (YDAS) is also facing overwhelming demand.

The Foundation's grant to YACVic will support and increase its advocacy for the Victorian youth sector and specifically young people with a disability. Three new positions will be created including a research and policy officer to coordinate a sector-wide COVID-19 response to focus on employment, mental health and education responses; a disability advocate team leader to coordinate the enormous increase in demand for services; and a digital communications officer to manage the increase in demand for online services, particularly from young people with a disability.



To learn more, visit: [yacvic.org.au](https://yacvic.org.au)

### MOVING FEAST

#### Mobilising Melbourne's food community for emergency relief

STREAT's response to COVID-19 has been to bring food social enterprises together to create Moving Feast with the aim of providing wholesome and nutritious food to vulnerable communities across Melbourne.

This collective of social enterprises already have in place chefs in kitchens, delivery drivers, and staff at a distribution centre and depot packing and delivering food. The Foundation's grant to STREAT enabled Moving Feast to provide food for vulnerable communities and assisted in creating and maintaining employment within the social enterprise sector during the pandemic.



To learn more, visit: [streat.com.au](https://streat.com.au)



# ENVIRONMENT & SUSTAINABILITY



We are all dependent on the natural systems that support us. How we interact with those systems, how we consume and produce goods, determine their sustainability as well as our own.

Melbourne's foodbowl has capacity to meet **41 per cent** of Melbourne's total current food needs.

Victoria's per capita emissions remain at **four times the global average**.  
48 49 50

**4 per cent increase since 2017** of rooftop solar in households.<sup>52</sup>

**Costs to build and run new renewable power plants** are estimated to be **between 40 and 60 per cent** of the cost of a new fossil fuel plant.<sup>54</sup>

**Air quality** due to the 2019 Australian bushfires is the **poorest ever** experienced in Greater Melbourne.<sup>55</sup> **A 4 per cent increase since 2017.**<sup>56</sup>

**4.3 metric tonnes** of food waste was generated in Australia - with **87 per cent** going to landfill, only **11 per cent** being recycled (2018).

By 2050 there will be 7-8 million people in Melbourne, requiring **60 per cent** more food.

**17.9 per cent** of households in Victoria now have rooftop solar.<sup>51</sup>

**23.9 per cent** of **Victoria's electricity comes from renewables.**<sup>53</sup>

**2019 was Australia's hottest and driest on record.**

And the **December 2019 Forest Fire Danger Index** was the highest on record.<sup>57 58</sup>

The average Victorian household **throws out approximately \$2,200 worth of food** each year.<sup>59</sup>

**IMPACT OF COVID-19**

Greenhouse gas emissions have **decreased in Australia due to the pandemic restrictions.**

**8 per cent year-on-year fall in emissions** in the June quarter.<sup>60</sup>

**A 79 per cent reduction in emissions** caused by jet fuel.<sup>61</sup>

**TOP 3 COMMUNITY CONCERNS**

**1**  
**Cost of electricity relative to household income**

**2**  
**Energy affordability**

**3**  
**Level of food waste**

## SUPPORTING RESILIENCE AND RECOVERY

We have the technology, the expertise and wealth to transition toward a more sustainable economy. We need to reduce our greenhouse gas emissions, support more sustainable production and consumption, and adapt to a changing climate.

Securing and sustaining our food systems and protecting our rivers and bays must become a priority.

### FOODBANK Mobilising Melbourne's food community for emergency relief

COVID-19 initially had a major impact on the availability of everyday grocery store items impacting Foodbank Victoria's supply chain of donated food goods. As stock levels became alarmingly low in April, Foodbank faced with the prospect of having to buy food items and goods to meet the unprecedented demand.

To assist in meeting this urgent need, the grant helped Foodbank increase their stock levels to continue distributing much needed food and goods to vulnerable people in our community.



To learn more, visit:  
[foodbank.org.au](https://foodbank.org.au)

### THE SMART ENERGY COUNCIL STIMULUS SUMMIT A Renewables-led Economic Recovery

Rebuilding the Australian economy via smart energy and transport infrastructure is proposed as a critical component of government stimulus packages. Australia has the potential to be an economic superpower in a quickly decarbonising world.

Australia has some of the best renewable energy resources globally, including solar access, geo-thermal, wind and tidal, within its borders. All of the components essential to storing renewable energy via the lithium-ion battery also exist as well as vast tracts of available land. In addition, Australia has the skills, economic wealth and infrastructure capabilities to harness these natural assets. There is potential to develop clean hydrogen for markets around the world, supply renewable electricity directly to Asian grids, as well as encouraging energy intensive industries here, using renewable energy. Significant land is available for carbon sequestration opportunities, including tree planting and soil carbon. Equally, our extensive marine environments could be utilised to sequester carbon, through carbon capturing activities such as seaweed farms.

The Foundation's new Clean Technology Powerhouse Initiative aims to direct community attention to the economic and employment opportunities associated with Australia's transition to zero emissions through a series of strategic communications.

The Smart Energy Council Stimulus Summit in May 2020 brought together over 20 government, industry and experts online to highlight the opportunities involved with an economic recovery led by electrification and renewable energy.

The summit included presentations from Energy Ministers from Queensland, Western Australia, South Australia, Victoria and the ACT, making several long and short-term commitments to a clean recovery. Australia's potential to export renewable energy, renewable energy fuelled products and the sequestration of emissions in terrestrial and aquatic environments was expertly articulated. Attended by over 3500 delegates the summit resulted in over 350 media clips and Twitter engagement yielded an audience reach of more than 300,000 for the hashtag #stimulussummit.

The Smart Energy Council Global Smart Energy Summit in late September involved over 20 keynote speakers including international experts, political influencers, eminent Australians, leading Australian business and renewables firm CEOs, as well as community and social change leaders.

This event presented an international perspective, featuring industry and political leaders exploring ways to tackle the economic crisis and the climate crisis at the same time. Leaders from across the world set out their plans to revitalise and decarbonise economies. It also highlighted how Australia was well placed to prosper as trading partners move swiftly to clean energy. The event had a total of 5,000 registrations and extensive traditional and social media exposure, including 150 media pieces and a potential audience reach of over 10 million.



To learn more, visit:  
[smartenergy.org.au](https://smartenergy.org.au)



## Strategic community giving since 1923

1. Australian Bureau of Statistics, 3218.0 Regional Population Growth, Australia, 2018-19. Online <https://www.abs.gov.au/statistics/people/population/regional-population/2018-19>
2. Ibid
3. Census of Population and Housing - 2016.0 QuickStats, Community Profiles and DataPacks User Guide, Australia, 2016. Online [https://quickstats.census-data.abs.gov.au/census\\_services/getproduct/census/2016/quickstat/036](https://quickstats.census-data.abs.gov.au/census_services/getproduct/census/2016/quickstat/036)
4. Ibid
5. Ibid
6. Australian Bureau of Statistics Labour Force, Detailed - Electronic Delivery publication (catalogue number 6291.0.55.001). Accessed May 2020. Online <https://www.abs.gov.au/statistics/labour/employment-and-unemployment/labour-force-australia-detailed/latest-release>
7. Australian Bureau of Statistics, 3218.0 Regional Population Growth, Australia, 2018-19. Online <https://www.abs.gov.au/statistics/people/population/regional-population/2018-19>
8. Robert Tanton, Dominic Peel and Vogi Vidyattama, 'Every suburb Every town- Poverty in Victoria, November 2018. Online <https://vcoss.org.au/wp-content/uploads/2018/11/Every-suburb-Every-town-Poverty-in-Victoria-VCOSS.pdf>
9. Ibid
10. Australian Bureau of Statistics, 3218.0 Regional Population Growth, Australia, 2018-19. Online <https://www.abs.gov.au/statistics/people/population/regional-population/2018-19>
11. AIHW Mental Health Services in Australia October 2020. Online <https://www.aihw.gov.au/reports/mental-health-services/mental-health-services-in-australia/report-content/summary-of-mental-health-services-in-australia>
12. Ibid

## Healthy & Resilient Communities

13. Scanlon Foundation Research Institute, 'Mapping Social Cohesion Report 2019'. Online <https://scanloninstitute.org.au/scanlon-mapping-social-cohesion-research>
14. Ibid
15. Australian Government Productivity Commission Report on Government Services, Police Services, Perceptions of Safety. Online <https://www.pc.gov.au/research/ongoing/report-on-government-services/2020/justice-police-services#vizContainerResults>
16. Dianna McDonald and Claire Havens, Sustainability Victoria, 'Linking Climate Change and Health Impacts Research Snapshot February 2020' <https://www.sustainability.vic.gov.au/About-us/Research/Health-and-Climate-Change-Research>
17. The Nature Conservancy and Resilient Melbourne, 'Living Melbourne: Our Metropolitan Urban Forest Technical Report'. The Nature Conservancy and Resilient Melbourne, Melbourne, 2019. Online <https://resilientmelbourne.com.au/living-melbourne/>
18. Jonathan Arundel, Melanie Lowe, Paula Hooper, Rebecca Roberts, Julianna Rozek, Carl Higgs, Billie Giles-Corti, RMIT University Centre for Urban Research, 'Creating liveable cities in Australia: Mapping urban policy implementation and evidence-based national liveability indicators'. Online <https://cur.org.au/project/national-liveability-report>
19. Australian Bureau of Statistics, 3218.0 Regional Population Growth, Australia, 2018-19. Online <https://www.abs.gov.au/statistics/people/population/regional-population/2018-19>
20. Nicolas Borchers Arriagada, Andrew J Palmer, David MJS Bowman, Geoffrey G Morgan, Bin B Jalaludin and Fay H Johnston, 'Unprecedented smoke related health burden associated with the 2019-20 bushfires in eastern Australia', Med J Aust 2020; 213 (6): 282-283. Published online: 23 March 2020 doi: 10.5694/mja2.50545
21. Victorian Department of Health and Human Services Coronavirus daily update Online <https://www.dhhs.vic.gov.au/coronavirus-covid-19-daily-update>
22. Victorian Department of Health and Human Services Coronavirus LGA testing data Online <https://www.dhhs.vic.gov.au/coronavirus-testing-data-lo-cal-government-area>
23. Australian Government Department of Health data Online <https://www.health.gov.au/resources/covid-19-cases-in-aged-care-services-residential-care>
24. COVID-19 Australia: Epidemiology Report 24, Fortnightly reporting period ending 30 August 2020
25. Australian Bureau of Statistics Household Impacts of Covid19 September 2020, catalogue number 4940.0 Online <https://www.abs.gov.au/ausstats/abs@nsf/mf/4940.0>
26. Victorian Government Department of Health and Human Services COVID19 <https://www.dhhs.vic.gov.au/information-and-supports-public-housing-restrictions-covid-19>
27. Luke Henriques-Gomes, The Guardian 7th Aug 2020. Online <https://www.theguardian.com/australia-news/2020/aug/07/more-than-30-residential-disability-services-linked-to-covid-19-outbreaks-in-victoria>
28. Office of the Prime Minister Media Release 17th August 2020. Online <https://www.pm.gov.au/media/new-mental-health-clinics-support-victorians-during-covid-19-pandemic>

## Homelessness & Affordable Housing

29. Demographia, 16th Annual Demographia International Housing Affordability Survey: 2020
30. Davidson, P, Bradbury, B, and Wong, M. (2020), Poverty in Australia 2020: Part 2, Who is affected? ACOSS/UNSW Poverty and Inequality Partnership Report No. 4, Sydney: ACOSS <http://povertyandinequality.acoss.org.au/poverty/poverty-in-australia-2020-part-2-who-is-affected/>
31. Ben Knight, ABC News Online 28 July 2020. <https://www.abc.net.au/news/2020-07-28/coronavirus-hotel-plan-for-homeless-to-be-extended-in-victoria/12498750>
32. Office of the Premier of Victoria Media Release, 'Further Certainty for Victorian Landlords', 4th September 2020. Online <https://www.premier.vic.gov.au/further-certainty-victorian-tenants-and-landlords>

## Lord Mayor's Charitable Foundation

Lord Mayor's Charitable Foundation Act 2017 (Vic)

Level 15, 1 Collins Street, Melbourne 3000  
GPO Box 1851 Melbourne 3001  
(03) 9633 0033  
[info@lmcf.org.au](mailto:info@lmcf.org.au)

## Education & Employment

33. Department of Education and Training Kindergarten Information Management System (KIMS) <https://discover.data.vic.gov.au/dataset/vcams-kindergarten-participation-rate>
34. Australian Curriculum, Assessment and Reporting Authority (ACARA) 2020, 'National Report on Schooling 2018' <https://www.acara.edu.au/reporting/national-report-on-schooling-in-australia/national-report-on-schooling-in-australia-2018>
35. Brotherhood of St Laurence, 'Prosperity's Children: Youth Unemployment in Australia' December 2019. Online [http://library.bsl.org.au/jspui/bitstream/1211694/1/BSL\\_Prospertys\\_children\\_youth\\_unemployment\\_Dec2019.pdf](http://library.bsl.org.au/jspui/bitstream/1211694/1/BSL_Prospertys_children_youth_unemployment_Dec2019.pdf)
36. Australian Department of Industry, National Foundation Skill Strategy for Adults', pp. 2, 2013
37. State Library Victoria and Public Libraries Victoria Network, 'Reading and Literacy for All: Adult Literacy', <https://www.slv.vic.gov.au/sites/default/files/Reading-and-literacy-for-all-adult-literacy-libraries.pdf>
38. Ibid
39. Australian Unemployed Workers' Union analysis of 2018 ABS Labor Force 6202.0 and Participation Job Search and Mobility February 2018, ABS 6226.0 <https://unemployedworkersunion.com/job-seekers-v-job-vacancy-data/>
40. Thomas, J, Barraket, J, Wilson, CK, Rennie, E, Ewing, S, MacDonald, T, 2019, 'Measuring Australia's Digital Divide: The Australian Digital Inclusion Index 2019', RMIT University and Swinburne University of Technology, Melbourne, for Telstra Online [https://digitalinclusionindex.org.au/wp-content/uploads/2019/10/TLS\\_ADI\\_Report-2019\\_Final\\_web\\_.pdf](https://digitalinclusionindex.org.au/wp-content/uploads/2019/10/TLS_ADI_Report-2019_Final_web_.pdf)
41. Ibid
42. Ibid
43. Ibid
44. Natalie Brown, Kitty te Riele, Becky Shelley, Jessica Woodroffe, Peter Underwood, 'Learning at home during COVID-19: Effects on vulnerable young Australians', Centre for Educational Attainment University of Tasmania Online [https://www.dese.gov.au/sites/default/files/doc/other/learning\\_at\\_home\\_during\\_covid\\_30042020.pdf](https://www.dese.gov.au/sites/default/files/doc/other/learning_at_home_during_covid_30042020.pdf)
45. Australian Bureau of Statistics Labour Force, Detailed - Electronic Delivery publication (catalogue number 6291.0.55.001). Online <https://www.abs.gov.au/statistics/labour/employment-and-unemployment/labour-force-australia-detailed/latest-release>
46. Ibid
47. Deputy Lord Mayor Arron Wood presentation to Melbourne Business Network, 'Impact of COVID on the City of Melbourne', 19 August 2020.

## Environment & Sustainability

48. Department of the Environment and Energy, 'State and Territory Greenhouse Gas Inventories 2018', Online <https://www.industry.gov.au/data-and-publications/state-and-territory-greenhouse-gas-inventories>
49. Australian Bureau of Statistics, 3101.0 - Australian Demographic Statistics, Jun 2018, 20 December 2018. <https://www.abs.gov.au/AUSSTATS/abs@nsf/DetailsPage/3101.0Jun%202018?OpenDocument>
50. The World Bank, 'World Development Indicators,' 1 July 2018. Online <http://data.worldbank.org/data-catalog/world-development-indicators>
51. Australian Government Australian Renewable Energy Agency, 'Australian PV Institute (APVI) Solar Map', 5 June 2020. Online <https://pv-map.apvi.org.au/>
52. Ibid
53. Clean Energy Council, 'Clean Energy Australia Report 2020', Online <https://www.cleanenergycouncil.org.au/resources/resources-hub/clean-energy-australia-report>
54. Graham P, J Hayward, J Foster and L Havas, 'GenCost 2019-20: Preliminary Results for Stakeholder Review - Draft for Review', CSIRO, December 2019. Online [https://www.aemo.com.au/-/media/Files/Electricity/NEM/Planning\\_and\\_Forecasting/Inputs-Assumptions-Methods/2019/CSIRO-GenCost2019-20\\_DraftforReview.pdf](https://www.aemo.com.au/-/media/Files/Electricity/NEM/Planning_and_Forecasting/Inputs-Assumptions-Methods/2019/CSIRO-GenCost2019-20_DraftforReview.pdf)
55. Australian Bureau of Meteorology, 'Annual climate statement 2019', January 2020. Online <http://www.bom.gov.au/climate/current/annual/aus/>
56. Joe Pickin, Paul Randell, Jenny Trinh, Bill Grant, 'National Waste Report 2018', Online <https://www.environment.gov.au/protection/waste-resource-recovery/national-waste-reports/national-waste-report-2018>
57. Australian Bureau of Meteorology, 'Annual climate statement 2019', January 2020. Online <http://www.bom.gov.au/climate/current/annual/aus/>
58. Joe Pickin, Paul Randell, Jenny Trinh, Bill Grant, 'National Waste Report 2018', Online <https://www.environment.gov.au/protection/waste-resource-recovery/national-waste-reports/national-waste-report-2018>
59. Sustainability Victoria, 'Love Food Hate Waste Research Report', May 2018. Online <https://www.sustainability.vic.gov.au/About-us/Research>
60. Australian Government Department of Industry Science, Energy and Resources, 'National Greenhouse Gas Inventory March 2020' <https://www.minister.industry.gov.au/ministers/taylor/media-releases/new-data-reveals-impact-covid-19-emissions-and-industry.gov.au/NGGIquarterly>
61. Ibid

## Lord Mayor's Charitable Foundation thanks the many people who contributed to this report.

### Disclaimer

While every effort has been made to ensure the accuracy of this information at the time of publication, new data or circumstances may have an impact on its accuracy. Lord Mayor's Charitable Foundation is not liable for any loss suffered through the use of any information contained in this report. Lord Mayor's Charitable Foundation wishes to acknowledge the traditional custodians of the land on which we work and celebrate our events, the People of the Kulin Nation. We pass on our respects to their Ancestors and Elders, both past and present. We acknowledge their tireless work in continuing their traditional lore and practices, and their commitment to protecting their traditional land and waterways.

### Lord Mayor's Charitable Foundation

#### Project Group:

Dr Kathy Avent, General Manager  
Social Innovation & Impact

Ms Erin Dolan, Program Manager  
Homelessness & Affordable Housing

Ms Harriet McCallum, Senior Program Manager  
Healthy & Resilient Communities

Mr Daniel Pediatitis, Senior Program Manager  
Environment & Sustainability

Mr Stephen Torsi, Program Manager  
Education & Employment

Ms Glonaida Quiapon, Graphic Designer

### Vital Signs™

Vital Signs® is owned by Community Foundations of Canada in Canada. Lord Mayor's Charitable Foundation holds the licence from Community Foundations of Canada to use Vital Signs™ in Greater Melbourne.



Lord Mayor's Charitable Foundation

ABN 48 042 414 556

Lord Mayor's Charitable Fund

ABN 63 635 798 473

[lmcf.org.au](http://lmcf.org.au)

To support the Foundation's ongoing response to the impacts of COVID-19 please visit [lmcf.org.au/covid](http://lmcf.org.au/covid)

To learn more about the Foundation's work and receive regular updates, please visit: [lmcf.org.au/subscribe](http://lmcf.org.au/subscribe)